

miR-200 family members reduce senescence and restore idiopathic pulmonary fibrosis type II alveolar epithelial cell trans-differentiation
by Moimas et al.

Supplementary Material
Manuscript ID ERJOR-00138-2019

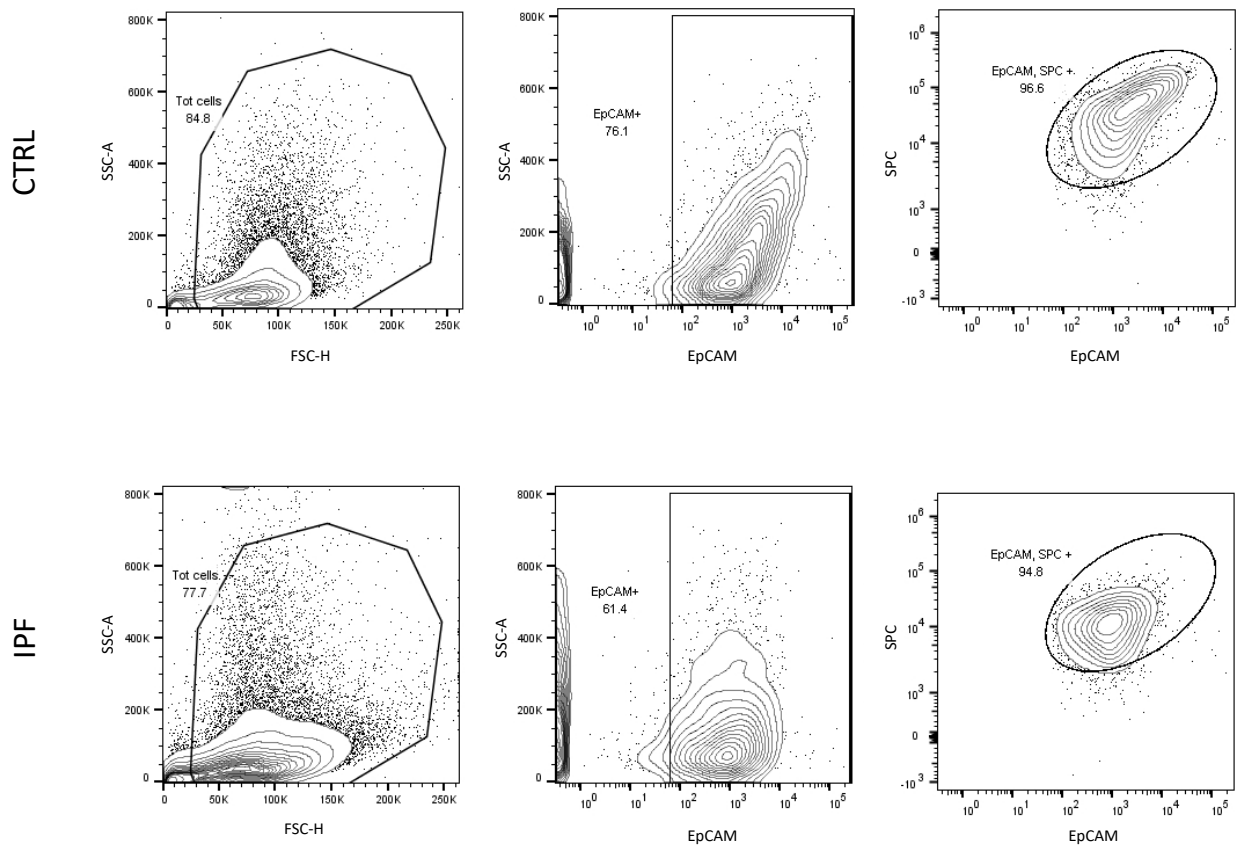


Figure S1. Flow cytometry plots of ATII cells purified from a healthy donor (upper panels) and an IPF patient (lower panels) showing that nearly 100% of EpCAM-positive cells scored also positive for SPC. SSC-A: side scatter area, FSC-H: forward scatter height, SPC: Surfactant Protein C, EpCAM: epithelial cell adhesion molecule.

SPC DAPI

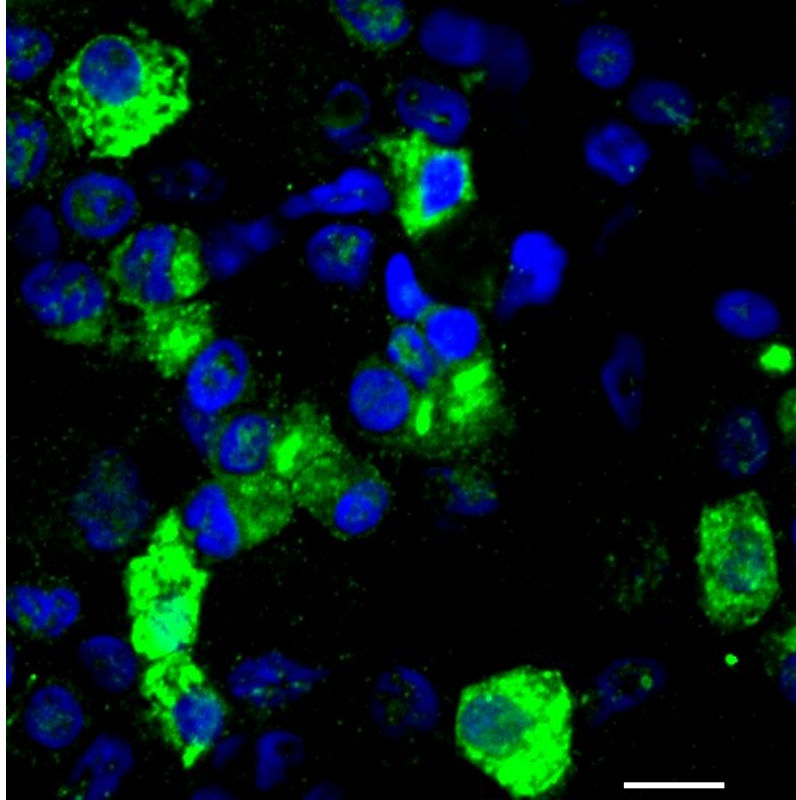


Figure S2. Immunofluorescence staining for SPC on ATII cells isolated from control donors. SPC: Surfactant Protein C. Scale bar = 20 μ m.

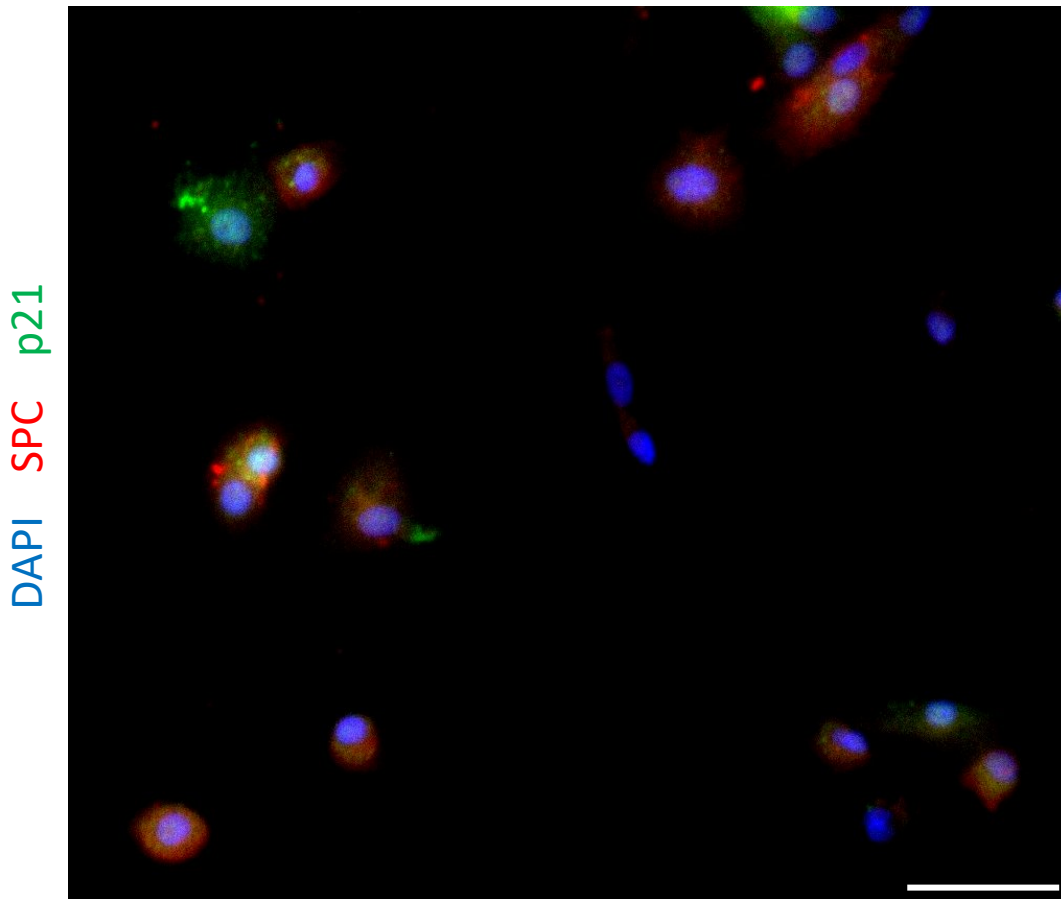


Figure S3. Immunostaining of ATII cells from IPF lungs for the senescence marker p21 (green) and the ATII marker SPC (red) at day 2. The transdifferentiation process begins immediately after plating, as supported by qPCR data, thus some p21+ cells have already lost SPC expression at day 2 when staining has been performed. SPC: Surfactant Protein C. Scale bar = 50 μ m.

Sample #	Disorder	Vial #	Cell number	Age	Sex (0=male; 1=female)	Ethnicity	Smoker (1=yes; 0=no; 2=former)
186	Control	1	10*10 ⁶	68	1	Caucasian	1
192	Control	1	11*10 ⁶	49	0	Caucasian	1
292	Control	1	5*10 ⁶	52	0	African American	0
		2	5*10 ⁶				
319	Control	1	1.5*10 ⁶	74	0	Caucasian	2
		2	1.5*10 ⁶				
		3	1.5*10 ⁶				
		4	2*10 ⁶				
		5	2*10 ⁶				
		6	2*10 ⁶				
		7	2*10 ⁶				
		8	2*10 ⁶				
		9	2*10 ⁶				
		10	2*10 ⁶				
		11	2*10 ⁶				
289	IPF	1	1*10 ⁶	76	0	Caucasian	2
		2	1*10 ⁶				
		3	1*10 ⁶				
294	IPF	1	1*10 ⁶	66	0	Caucasian	1
		2	2.5*10 ⁶				
		3	10*10 ⁶				
		4	10*10 ⁶				
		5	10*10 ⁶				
		6	10*10 ⁶				
301	IPF	1	2*10 ⁶	67	1	Caucasian	1
		2	2*10 ⁶				
		3	2*10 ⁶				
		4	2*10 ⁶				
		5	2*10 ⁶				
317	IPF	1	2*10 ⁶	53	0	African American	0
		2	2*10 ⁶				
		3	2*10 ⁶				
		4	2*10 ⁶				
		5	2*10 ⁶				
323	IPF	1	2*10 ⁶	61	1	Caucasian	2
		2	2*10 ⁶		0		
328	IPF	1	2*10 ⁶	72		Caucasian	1
		2	4*10 ⁶				
		3	4*10 ⁶				
		4	4*10 ⁶				
		5	4*10 ⁶				
		6	4*10 ⁶				

Table S1. Characteristics of lung donors showing the disease status, cell vials available for each patient with indication of the cell number in each vial, age, sex, ethnicity and smoking status.