

ONLINE SUPPLEMENTARY MATERIAL

Accompanied versus unaccompanied walking for continuous oxygen saturation measurement during 6-minute walk test in COPD: a randomised cross-over study

Thomas F. Riegler^{1,2}, Anja Frei³, Sarah R. Haile³ and Thomas Radtke³

¹ Berner Reha Zentrum AG, Heiligenschwendi, Switzerland

² Institute for Physiotherapy, Zurich University of Applied Sciences, Zurich, Switzerland

³ Epidemiology, Biostatistics and Prevention Institute, University of Zurich, Switzerland

Results

Table S1. Pre- and post-test conditions in the two experimental conditions

Outcome	6MWT _{with} n=22		6MWT _{without} n=27	
	pre-test	post-test	pre-test	post-test
Heart rate, bpm	89 ± 13	109 ± 14	89 ± 13	108 ± 12
SpO ₂ , %	94 ± 2	86 ± 6	94 ± 3	86 ± 6
SpO ₂ nadir, %		85 ± 5		85 ± 6
Dyspnoea, 0-10	0.2 ± 0.7	3.5 ± 2.1	0.2 ± 0.6	3.5 ± 2.1
Leg fatigue, 0-10	0.4 ± 0.9	2.7 ± 1.6	0.4 ± 0.9	2.7 ± 1.4

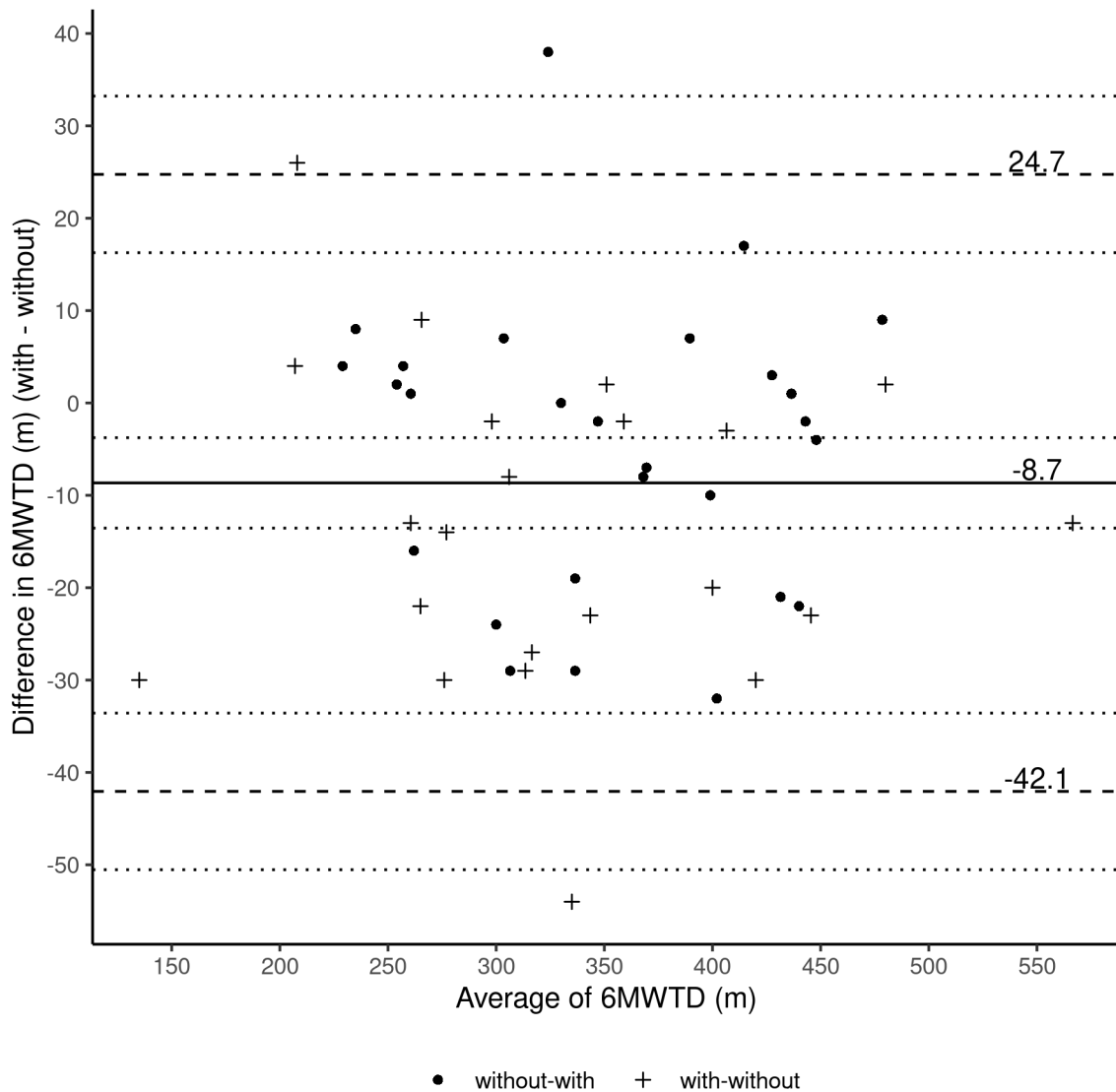
Data are given as mean ± standard deviation. Perceived dyspnoea and leg fatigue were measured using a 0-10 Borg Scale. 6MWT six-minute walk test, 6MWT_{without} patient walking alone during 6MWT, 6MWT_{with} assessor walking behind the patient during 6MWT, bpm, beats per minute, SpO₂ oxygen saturation.

Table S2. Patient perceptions during the two 6MWTs (n=49)

	6MWT_{with}	6MWT_{without}	either		
Which test did you like more?	12 (25%)	8 (16%)	29 (59%)		
Questions concerning the					
assessor accompanying the patient	absolutely not	a little bit	moderate	strong	very strong
To which extent did you feel slowed down by the assessor accompanying you?	46 (94%)	2 (4%)	1 (2%)	0 (0%)	0 (0%)
To which extent did you feel pushed forward by the assessor accompanying you?	37 (76%)	9 (18%)	1 (2%)	1 (2%)	1 (2%)
To which extent did you feel bothered by the assessor accompanying you?	47 (96%)	1 (2%)	1 (2%)	0 (0%)	0 (0%)
Did you feel safer because the assessor accompanied you?	29 (60%)	8 (16%)	2 (4%)	8 (16%)	2 (4%)

6MWT six-minute walk test, 6MWT_{without} patient walking alone during 6MWT, 6MWT_{with} assessor accompanying the patient during 6MWT.

Figure S1. Bland-Altman plot showing differences in six-minute walking distance between the two experimental conditions.



6MWT: 6-Minute Walk Test distance. The solid line represents the mean difference, and the dashed lines represents the upper and lower limits of agreement (mean difference \pm 1.96 x standard deviation of the differences). The dotted lines indicate the 95% confidence intervals of the mean difference and the lower and upper limits of agreement. Mean difference: -8.7m [95% CI, -13.5 to -3.8]. Lower limit of agreement: -42.1m [95% CI, -50.5 to -33.6]. Upper limit of agreement: 24.8m [95% CI, 16.3 to 33.2].