



The effect of oxygen and carbon dioxide cross-sensitivity sensor error in the Eco Medics Exhalyzer D device on measures of conductive and acinar airway function

Jack Bozier^{1,2}, Edward Jeagal^{1,3}, Paul D. Robinson^{1,4}, G. Kim Prisk^{1,5}, David G. Chapman ^{1,2,3}, Gregory G. King^{1,2,6}, Cindy Thamrin ^{1,6} and Sandra Rutting ^{1,2}

¹Woolcock Institute of Medical Research, The University of Sydney, Glebe, NSW, Australia. ²Dept of Respiratory Medicine, Royal North Shore Hospital, St Leonards, NSW, Australia. ³School of Life Sciences, University of Technology Sydney, Glebe, NSW, Australia. ⁴Dept of Respiratory Medicine, The Children's Hospital at Westmead, Westmead, NSW, Australia. ⁵University of California, San Diego, CA, USA. ⁶Faculty of Medicine and Health, The University of Sydney, Glebe, NSW, Australia.

Corresponding author: Sandra Rutting (sandra.rutting@sydney.edu.au)



Shareable abstract (@ERSpublications)

O₂ and CO₂ cross-sensitivity sensor error in the Exhalyzer D device significantly overestimates FRC and LCI in adults, consistent with infants and children. Importantly, there was a high degree of underestimation of S_{cond}, but minimal impact on S_{acin}. <https://bit.ly/3HcH3Tp>

Cite this article as: Bozier J, Jeagal E, Robinson PD, *et al.* The effect of oxygen and carbon dioxide cross-sensitivity sensor error in the Eco Medics Exhalyzer D device on measures of conductive and acinar airway function. *ERJ Open Res* 2022; 8: 00614-2021 [DOI: 10.1183/23120541.00614-2021].

Copyright ©The authors 2022

This version is distributed under the terms of the Creative Commons Attribution Non-Commercial Licence 4.0. For commercial reproduction rights and permissions contact permissions@ersnet.org

Received: 31 Oct 2021
Accepted: 17 Feb 2022

Abstract

Introduction The multiple breath nitrogen washout (MBNW) test provides important clinical information in obstructive airways diseases. Recently, a significant cross-sensitivity error in the O₂ and CO₂ sensors of a widely used commercial MBNW device (Exhalyzer D, Eco Medics AG, Duernten, Switzerland) was detected, which leads to overestimation of N₂ concentrations. Significant errors in functional residual capacity (FRC) and lung clearance index (LCI) have been reported in infants and children. This study investigated the impact in adults, and on additional important indices reflecting conductive (S_{cond}) and acinar (S_{acin}) ventilation heterogeneity, in health and disease.

Methods Existing MBNW measurements of 27 healthy volunteers, 20 participants with asthma and 16 smokers were reanalysed using SPIROWARE V 3.3.1, which incorporates an error correction algorithm. Uncorrected and corrected indices were compared using paired t-tests and Bland–Altman plots.

Results Correction of the sensor error significantly lowered FRC (mean difference 9%) and LCI (8–10%) across all three groups. S_{cond} was higher following correction (11%, 14% and 36% in health, asthma and smokers, respectively) with significant proportional bias. S_{acin} was significantly lower following correction in the asthma and smoker groups, but the effect was small (2–5%) and with no proportional bias.

Discussion The O₂ and CO₂ cross-sensitivity sensor error significantly overestimated FRC and LCI in adults, consistent with data in infants and children. There was a high degree of underestimation of S_{cond} but minimal impact on S_{acin}. The presence of significant proportional bias indicates that previous studies will require reanalysis to confirm previous findings and to allow comparability with future studies.

Introduction

The multiple breath nitrogen washout (MBNW) test assesses ventilation heterogeneity, often increased in respiratory diseases such as asthma and COPD [1, 2]. The test involves measurement of the concentration of an inert tracer gas of interest (*i.e.* N₂) in expired breath, which is progressively washed out by inhalation of 100% oxygen over a series of tidal breaths. Analysis of the exhaled N₂ concentration *versus* exhaled volume of each breath allows calculation of a global measure of heterogeneity (lung clearance index, LCI), heterogeneity arising predominantly within the convection-dependent airways (S_{cond}), heterogeneity arising in the more peripheral, diffusion-dependent acinar airways (S_{acin}) and functional residual capacity (FRC) [3].



MBNW has been extensively used as a research tool in various respiratory diseases, particularly in obstructive airways diseases. With the availability of commercially available devices and international guidelines, it has emerging utility in clinical care, especially in cystic fibrosis (CF). The LCI has proved to be a sensitive marker of early disease progression in children with CF and has also been included as a primary end-point in several therapeutic trials [4, 5]. MBNW has yet to be a part of clinical management in other lung diseases, but studies have shown utility of S_{acin} and S_{cond} in guiding up- versus down-titration of treatment [6, 7] and sensitivity to detect improvement in symptoms in response to treatment with high-dose inhaled corticosteroid [8] or monoclonal antibody therapy in asthma [9]. These indices are also sensitive markers of small airway dysfunction and its reversibility in smokers with normal spirometry [10, 11].

Recently, the presence and impact of a critical sensor error in a commercial device used to perform MBNW (Exhalyzer D, Eco Medics AG, Duernten, Switzerland) has been reported in infants and older children [12, 13]. This MBNW device relies on accurate measurements from O_2 and CO_2 sensors to calculate N_2 concentration indirectly. It was found that both sensors exhibit cross-sensitivities, *i.e.* the O_2 sensor estimation is dependent on CO_2 concentrations and vice versa, such that as the washout progresses, O_2 and CO_2 concentrations are underestimated and N_2 concentrations increasingly overestimated, prolonging the washout. This has been shown to result in significant errors of up to 12% and 15–19% in the assessment of FRC and LCI, respectively [12–14]. A software update (V 3.3.1) has now been released by the manufacturer with an implemented correction algorithm, which recalculates the N_2 concentration trace.

The magnitude of effect of this sensor error correction on these MBNW indices in adults is currently unknown, and to date there has been no description of the effects on additional important indices such as S_{cond} and S_{acin} . This is essential to understand the validity of changes reported in previously published studies. Therefore, this study aimed to determine the effect of the CO_2 and O_2 sensor correction on MBNW parameters in both health and disease by examining three different adult cohorts: 1) healthy volunteers, 2) patients with asthma, and 3) long-term smokers. Secondly, we investigated whether correction of the sensor error affected the within- and between-session repeatability of MBNW parameters in health. Some of the data from the healthy and asthma participants have been previously published [15, 16].

Methods

Research participants

In this study we retrospectively reanalysed MBNW measurements from healthy volunteers, participants with asthma and long-term smokers that were recruited from Royal North Shore Hospital and the Woolcock Institute of Medical Research. Healthy participants were current nonsmokers with a smoking history of <10 pack-years and no respiratory disease. Patients with asthma had a physician diagnosis of asthma and were current nonsmokers with a smoking history of <10 pack-years. Long-term smokers were current smokers with at least a 10 pack-year smoking exposure; these data were collected as part of a larger clinical trial (Australian Clinical Trials Registration Number (ACTRN): 12616001208493) in smokers with normal post-bronchodilator (BD) spirometry or GOLD Stage 1 (post-BD $FEV_1/FVC < 0.7$ but $FEV_1 > 80\%$ predicted), with the additional inclusion criteria of abnormal S_{cond} and/or S_{acin} as assessed by z-score < -1.64 using published predicted equations [11]. The original studies were approved by the local Human Research Ethics Committee (Northern Sydney Local Health District, LNR/16/HAWKE/11 and HREC/15/HAWKE/489).

Standard pulmonary function testing

After obtaining written informed consent, all participants underwent conventional lung function testing including spirometry, plethysmography and diffusing capacity for carbon monoxide (D_{LCO}). These were performed according to American Thoracic Society (ATS)/European Respiratory Society (ERS) criteria. All parameters were expressed as percent predicted using published predicted equations [17, 18].

MBNW testing

In the original studies, after a period of at least 10 min of rest, the healthy and asthmatic participants underwent MBNW testing by two commonly used breathing protocols: controlled and free-breathing protocols, in randomised order (assigned by a computer-based random number generator); the group of smokers performed MBNW using the controlled breathing protocol only. A subset of healthy participants returned for testing within 3 months of their first visit, in which all measurements were repeated in the same order. Both controlled and free-breathing protocols were included as several published studies showed that indices of conductive and acinar ventilation heterogeneity were not comparable between breathing protocols [15, 16, 19].

MBNW was performed using the Exhalyzer D with SPIROWARE V 3.1.6 (Eco Medics AG, Duernten, Switzerland). Both the controlled breathing and free-breathing protocols were performed according to ERS consensus and have been previously described in detail [15, 20]. In brief, after establishing a stable breathing pattern and end-expiratory lung volume (EELV), nitrogen washout during 100% O₂ inhalation was commenced. The controlled breathing protocol required participants to breathe at a RR between 8 and 12 breaths.min⁻¹ and tidal volume (V_T) between 0.95 and 1.3 L following visual feedback until the N₂ concentration decreased to 1/40th of the starting end-expiratory N₂ concentration. In the free-breathing protocol, participants were encouraged to adopt relaxed tidal breathing but advised to adjust tidal volumes if insufficient expired N₂ phase III slope was observed; calculated S_{cond} and S_{acin} were adjusted for V_T, as per consensus guidelines [20]. At least three technically acceptable trials with FRC values <10% of the mean were obtained for each breathing protocol.

MBNW analysis

The effect of the sensor error was assessed by comparing the parameters of standard (uncorrected) analysis in SPIROWARE V 3.1.6 with corrected parameters reanalysed in new SPIROWARE V 3.3.1, applying the sensor error correction algorithm. The correction algorithm has been described extensively before in SANDVIK *et al.* [13] and WYLER *et al.* [12]. Briefly, the algorithm was derived using Exhalyzer D sensors and mass spectrometer to measure the O₂ and CO₂ concentrations of a wide range of well-defined technical gas mixtures under various conditions, and used a polynomial function to correct for the errors observed. System settings, delay correction and quality control remained unaltered (*i.e.* selection of breaths and any correction made to phase III slopes were consistent between both versions).

Statistical analysis

Statistical analysis was carried out with GraphPad Prism 8 (GraphPad Software Inc., La Jolla, CA, USA). All data are expressed as mean±SD, unless otherwise stated. Differences between uncorrected and corrected parameters were examined using paired Student's t-tests and Pearson's correlation. To investigate bias, we generated Bland–Altman plots as the difference (corrected minus uncorrected) *versus* the average, plotting the mean difference and 95% limit of agreement (95% LoA). We performed linear regression of the difference *versus* average to determine any proportional bias.

To make clear the consequence of the correction of the sensor error on prior studies, we present these results as the change in the outcome parameters of existing studies that result from this correction, *i.e.* with the uncorrected parameters as reference (for example, the sensor error results in expired N₂ being erroneously high towards the end of the washout). This in turn causes an overestimation in FRC. Our results are presented in the context of how FRC is altered when the sensor error is corrected, in this case a reduction in calculated FRC.

Within-session variability was expressed as the coefficient of variation (CoV) calculated as the ratio of the SD to the mean from three separate trials. To determine between-session variability, we calculated the difference (visit 2 minus visit 1) and 95% LoA separately for corrected and uncorrected parameters. We also report the between-session intra-class correlation coefficients (ICC), calculated using a two-way mixed effects ANOVA model based on absolute agreement, multiple measurements (k=3). A p-value below 0.05 was considered statistically significant.

Results

Patient demographics

We reanalysed MBNW measurements from 27 healthy volunteers, 20 asthmatic patients and 16 long-term smokers. The patients' demographics and lung function are summarised in table 1. The healthy volunteers were slightly younger than the asthmatic patients and smokers. The group of smokers had a mean±SD smoking history of 19.3±8.6 pack-years. Both plethysmography and MBNW-derived FRC were comparable across the groups, whereas MBNW indices of heterogeneity were significantly higher in the asthma and smoker groups compared to health, and higher in the smokers compared to asthma (in terms of S_{cond} and S_{acin}).

Effects of sensor correction on MBNW parameters

Correction of CO₂ and O₂ sensor error had a significant effect on all MBNW parameters measured by the controlled breathing protocol (table 2). Following correction, mean (95% CI) FRC and LCI decreased by 7.8 (7.0–8.4)% and 9.8 (8.8–10.8)%, respectively, in health. Similar decreases in FRC and LCI were observed in asthma and long-term smokers. While uncorrected FRC values measured by MBNW were comparable to FRC measured by body plethysmography, corrected FRC values were significantly lower

TABLE 1 Participant demographics and lung function

	Health	Asthma	Smokers
Participants (n)	27	20	16
Males/females (n)	16/11	4/16	12/4
Age (years)	34 (19–65)	43 (24–78) [¶]	43 (27–54) ⁺
BMI (kg·m⁻²)	24.6±3.4	25.5±4.3	27.4±6.4
Smoking history (pack-years)			19.3±8.6
Lung function			
FEV ₁ (% predicted)	105.0±14	89.2±19 [¶]	98.8±11 [§]
FVC (% predicted)	105.0±15	97.7±20	105.5±11
FEV ₁ /FVC (%)	83±6.0	74±8.4 [¶]	76±6.0 ⁺
TLC (% predicted)	101±23	103±18	108±11
FRC _{pleth} (% predicted)	97.0±27	97.0±17	109.1±19
D _{LCO} (% predicted)	102±13	99±15	90±12 ⁺
FRC _{MBNW} (L) [#]	2.94±0.89	2.62±0.72	2.93±0.84
LCI (TO) [#]	6.49±0.47	7.23±1.04 [¶]	7.05±0.82 ⁺
S _{cond} (L ⁻¹) [#]	0.019±0.011	0.033±0.018 [¶]	0.038±0.019 [§]
S _{acin} (L ⁻¹) [#]	0.056±0.020	0.086±0.049	0.095±0.037 ^{+,§}

Data are presented as mean±SD or median (interquartile range) unless otherwise stated. BMI: body mass index; D_{LCO}: diffusing capacity of the lung for carbon monoxide; FEV₁: forced expiratory volume in 1 s; FRC: functional residual capacity; FVC: forced vital capacity; LCI: lung clearance index; MBNW: multiple breath nitrogen washout; S_{acin}: distal/intra-acinar airways ventilation heterogeneity; S_{cond}: conducting airways ventilation heterogeneity; TLC: total lung capacity; TO: lung turnover. [#]Corrected, controlled breathing protocol values used. [¶]p<0.05 health versus asthma. ⁺p<0.05 health versus smokers. [§]p<0.05 asthma versus smokers.

compared to FRC_{pleth} in all three groups (mean±SD differences of -0.26 ± 0.47 L ($p=0.008$), -0.26 ± 0.37 L ($p=0.006$) and -0.64 ± 0.71 L ($p=0.003$) in health, asthma and smokers, respectively).

Notably, mean (95% CI) S_{cond} significantly increased by 11.1 (−1.4–23.5)%, 14.0 (4.2–23.9)% and 36 (19.8–52.2)% following sensor correction in health, asthma and smokers, respectively. In contrast, S_{acin} was significantly lower following sensor correction in the asthma and smokers groups, with a trend to significance in the healthy group ($p=0.08$). The impact on S_{acin}, however, was minimal with mean decreases (95% CI) of 1.8 (0.44–4.0)%, 2.9 (0.9–4.9)% and 4.8 (0.7–8.9)% observed in health, asthma and

TABLE 2 Effects of sensor correction on main MBNW parameters

Parameter	Standard	Corrected	Mean difference (95% CI) absolute	Mean difference (95% CI) relative	p-value
Health					
FRC (L)	3.19±0.98	2.94±0.89	−0.25 (−0.29–−0.21)	−7.7 (−8.4–−7.0)	<0.0001
LCI (TO)	7.20±0.58	6.49±0.47	−0.71 (−0.80–−0.63)	−9.8 (−10.8–−8.8)	<0.0001
S _{cond} (L ⁻¹)	0.017±0.009	0.019±0.011	0.002 (0.0003–0.004)	11.1 (−1.4–23.5)	0.03
S _{acin} (L ⁻¹)	0.057±0.020	0.056±0.020	−0.0009 (−0.002–0.0001)	−1.8 (−4.0–0.44)	0.08
Asthma					
FRC (L)	2.84±0.76	2.62±0.72	−0.22 (−0.26–−0.18)	−8.0 (−9.2–−6.8)	<0.0001
LCI (TO)	7.94±1.19	7.23±1.04	−0.71 (−0.84–−0.58)	−8.8 (−10.0–−7.6)	<0.0001
S _{cond} (L ⁻¹)	0.029±0.016	0.033±0.018	0.004 (0.001–0.006)	14.0 (4.2–23.9)	0.003
S _{acin} (L ⁻¹)	0.088±0.049	0.086±0.049	−0.002 (−0.003–−0.0008)	−2.9 (−4.9–−0.9)	0.003
Smokers					
FRC (L)	3.19±0.91	2.93±0.84	−0.28 (−0.34–−0.22)	−8.4 (−10.2–−6.7)	<0.0001
LCI (TO)	7.69±0.96	7.05±0.82	−0.65 (−0.78–−0.51)	−8.3 (−9.7–−6.8)	<0.0001
S _{cond} (L ⁻¹)	0.029±0.015	0.038±0.019	0.009 (0.005–0.013)	36.0 (19.8–52.2)	0.0004
S _{acin} (L ⁻¹)	0.10±0.040	0.095±0.037	−0.004 (−0.007–−0.001)	−4.8 (−8.9–−0.71)	0.008

Effects of sensor correction on main MBNW parameters. Data are presented as mean±SD unless otherwise stated. FRC: functional residual capacity; LCI: lung clearance index; MBNW: multiple breath nitrogen washout; S_{acin}: distal/intra-acinar airways ventilation heterogeneity; S_{cond}: conducting airways ventilation heterogeneity; TO: lung turnover. The standard (uncorrected) value is the reference. Absolute difference is calculated as corrected – standard. Relative difference is calculated as corrected – standard/standard × 100.

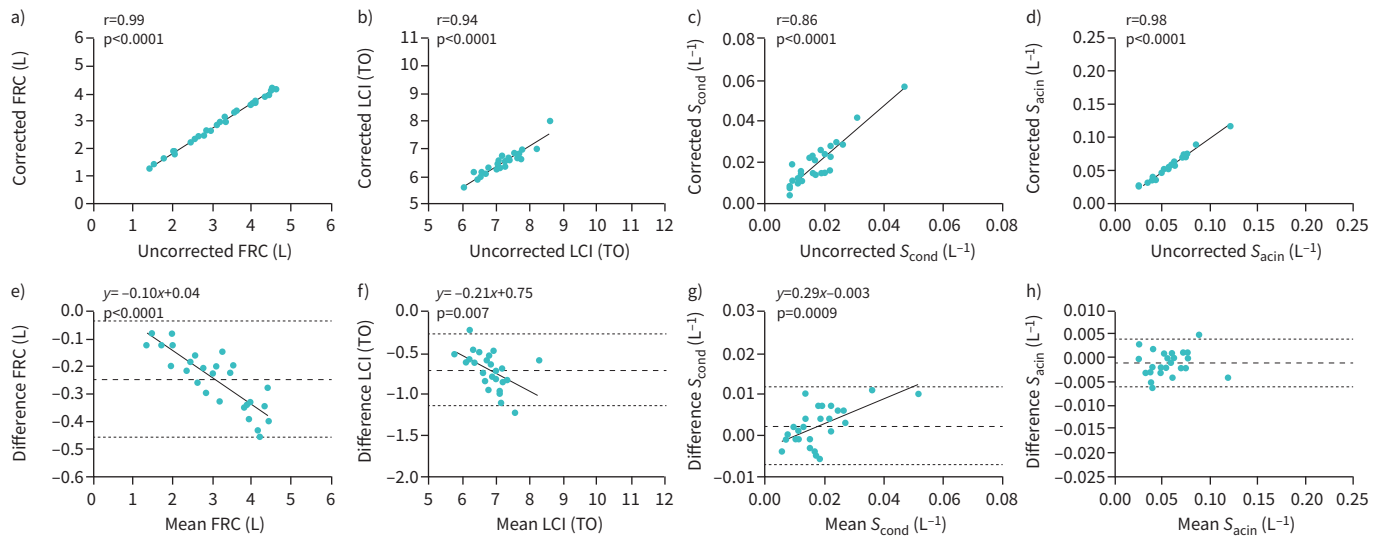


FIGURE 1 Comparison of standard (uncorrected) and corrected multiple breath nitrogen washout (MBNW) parameters in health. There were strong correlations between uncorrected and corrected functional residual capacity (FRC) ($r=0.99$ and $p<0.0001$) (a), lung clearance index (LCI) ($r=0.94$ and $p<0.0001$) (b), S_{cond} ($r=0.86$, $p<0.0001$) (c) and S_{acin} ($r=0.98$, $p<0.0001$) (d). Bland-Altman plots show that sensor correction results in a lower FRC (mean difference (95% limits of agreement) -0.25 (-0.46 , -0.04), $p<0.0001$) (e), lower LCI (-0.71 (-1.14 – -0.28), $p<0.0001$) (f), higher S_{cond} (0.002 (-0.007 – 0.012), $p=0.027$) (g), but no change in S_{acin} (-0.0009 (-0.006 – 0.004), $p=0.08$) (h). There was also significant proportional bias confirmed by linear regression for FRC ($p<0.0001$), LCI ($p<0.007$) and S_{cond} ($p=0.0009$). S_{acin} : distal/intra-acinar airways ventilation heterogeneity; S_{cond} : conducting airways ventilation heterogeneity.

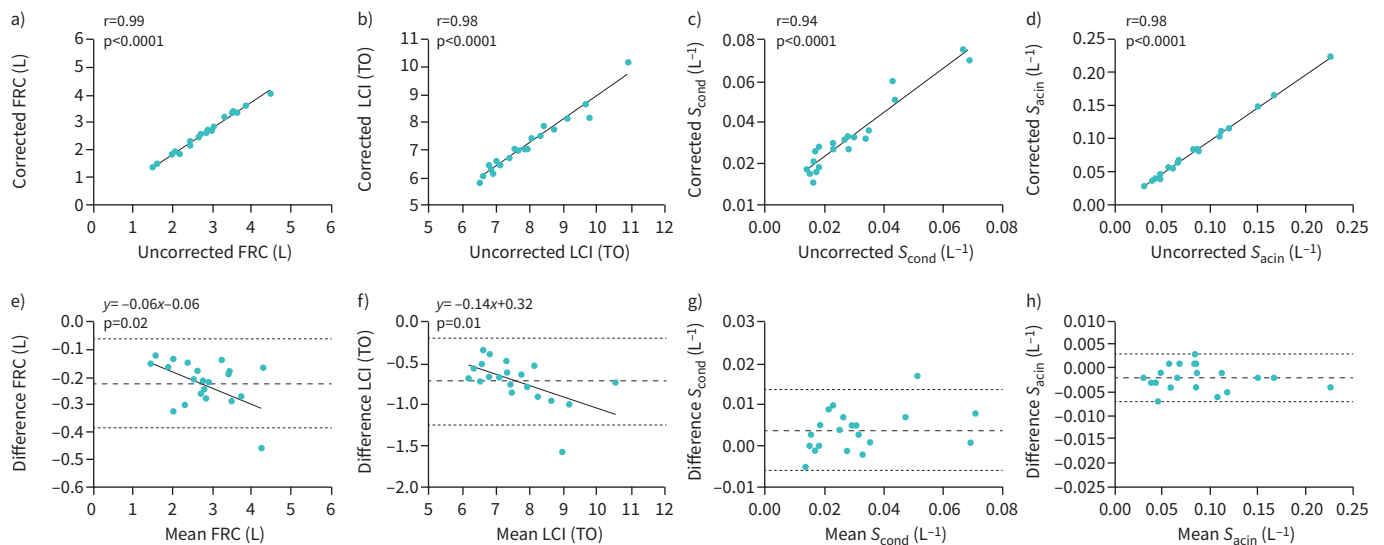


FIGURE 2 Comparison of standard (uncorrected) and corrected multiple breath nitrogen washout (MBNW) parameters in asthma. There were strong correlations between uncorrected and corrected functional residual capacity (FRC) ($r=0.99$ and $p<0.0001$) (a), lung clearance index (LCI) ($r=0.98$ and $p<0.0001$) (b), S_{cond} ($r=0.94$, $p<0.0001$) (c) and S_{acin} ($r=0.98$, $p<0.0001$) (d). Bland-Altman plots show that sensor correction results in a lower FRC (mean difference (95% limits of agreement) -0.22 (-0.38 – 0.06), $p<0.0001$) (e), lower LCI (-0.71 (-1.24 – -0.18), $p<0.0001$) (f), higher S_{cond} (0.004 (-0.006 – 0.014), $p=0.003$) (g) and lower S_{acin} (-0.002 (-0.007 – 0.003), $p=0.003$) (h). There was also significant proportional bias confirmed by linear regression for FRC ($p=0.02$) and LCI ($p=0.01$). S_{acin} : distal/intra-acinar airways ventilation heterogeneity; S_{cond} : conducting airways ventilation heterogeneity.

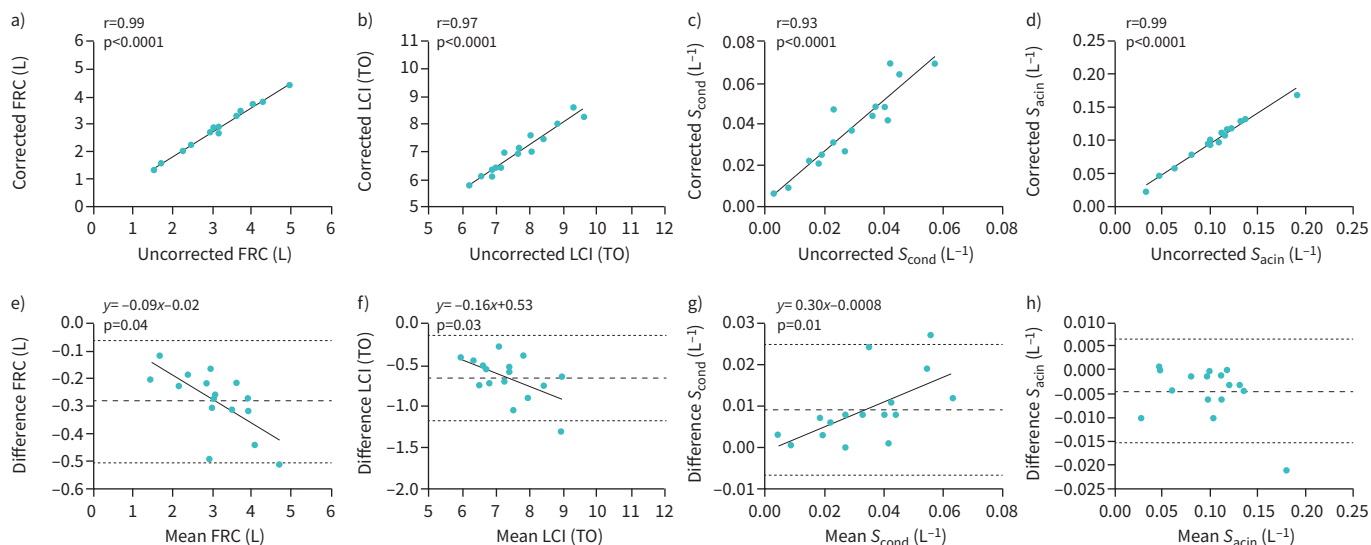


FIGURE 3 Comparison of standard (uncorrected) and corrected multiple breath nitrogen washout (MBNW) parameters in smokers. There were strong correlations between uncorrected and corrected functional residual capacity (FRC) ($r=0.99$ and $p<0.0001$) (a), lung clearance index (LCI) ($r=0.97$ and $p<0.0001$) (b), S_{cond} ($r=0.93$, $p<0.0001$) (c) and S_{acin} ($r=0.99$, $p<0.0001$) (d). Bland–Altman plots show that sensor correction results in a lower FRC (mean difference (95% limits of agreement) $(-0.28 (-0.50 - -0.06)$, $p<0.0001$) (e), lower LCI $(-0.65 (-1.16 - -0.13)$, $p<0.0001$) (f), higher S_{cond} $(0.009 (-0.006 - 0.025)$, $p=0.0004$) (g) and lower S_{acin} $(-0.004 (-0.015 - 0.006)$, $p=0.008$) (h). There was also significant proportional bias confirmed by linear regression for FRC ($p=0.04$), LCI ($p=0.03$) and S_{cond} ($p=0.01$). The uncorrected value is the reference. Absolute differences were calculated as corrected – uncorrected. S_{acin} : distal/intra-acinar airways ventilation heterogeneity; S_{cond} : conducting airways ventilation heterogeneity.

smokers, respectively. When using the free-breathing protocol, similar effects for LCI, FRC, S_{cond} and S_{acin} were observed in health and asthma (Online Supplement, Table S1).

There were strong correlations between all corrected and uncorrected MBNW values across the three groups (all r -values >0.85) (figures 1–3, panels A–D) and for both breathing protocols (Online Supplement, Figures S1 and S2). Bland–Altman plots showed that the effect of sensor correction on LCI and FRC demonstrated strong proportional bias in all three groups (greater difference with higher mean value) (figures 1–3, panels E–H). The Bland–Altman plots also revealed large variance in S_{cond} and significant proportional bias in health and smokers, but not in asthma. Less variance in differences was seen in S_{acin} and there was no evidence of proportional bias in any of the three groups.

Effects on within- and between-session repeatability in health

Fifteen healthy volunteers underwent repeat testing. Within-session and between-session variability measurements are presented in table 3. There were no differences observed in within-session CoVs between corrected and uncorrected FRC ($p=0.46$) or LCI ($p=0.84$). Between-session variability was minimally affected by the sensor error. Corrected FRC and LCI showed narrower 95% LoAs, whereas S_{acin} and S_{cond} showed slightly wider 95% LoAs. Between-session ICC values were numerically comparable between corrected and uncorrected values. Similar impact on within- and between-session repeatability was observed with the free-breathing protocol (Online Supplement, Table S2).

Discussion

In this study, we demonstrate that correction of the O_2 and CO_2 sensor error in the Exhalyzer D system results in significantly lower FRC and LCI, and higher S_{cond} values in three different adult patient groups. The impact on S_{acin} , although statistically significant, was minimal. There were strong correlations between the corrected and uncorrected values for all MBNW parameters in all three groups. Importantly, the effect of the correction showed a significant proportional bias in FRC and LCI in all three groups, and significant proportional bias in S_{cond} was also evident in health and smokers, although not in asthma. The O_2 and CO_2 sensor error correction produced less variance in S_{acin} compared to other parameters and there was no evidence of proportional bias. Furthermore, sensor error correction had minimal impact on within-session and between-session variability, with a smaller 95% LoA for LCI between sessions.

TABLE 3 Effects on within- and between-session repeatability in health

	Within-session CoV	Between-session difference	Between-session 95% LoA	Between-session ICC
Uncorrected				
FRC (L)	3.3±2.9%	-0.03±0.52	-1.04-0.98	0.931
LCI (TO)	2.5±2.4%	0.06±0.47	-0.86-0.98	0.812
S_{cond} (L ⁻¹)	-	-0.001±0.011	-0.017-0.015	0.836
S_{acin} (L ⁻¹)	-	-0.003±0.018	-0.037-0.031	0.835
Corrected				
FRC (L)	3.0±1.9%	-0.02±0.47	-0.94-0.91	0.927
LCI (TO)	2.4±1.7%	0.13±0.34	-0.53-0.79	0.849
S_{cond} (L ⁻¹)	-	-0.003±0.009	-0.021-0.015	0.867
S_{acin} (L ⁻¹)	-	-0.002±0.02	-0.039-0.034	0.828

Data are presented as mean±SD unless otherwise stated. Mean differences are visit 2 minus visit 1. 95% LoA: 95% limits of agreement; CoV: coefficient of variation; FRC: functional residual capacity; ICC: intra-class correlation coefficient; LCI: lung clearance index; S_{acin} : distal/intra-acinar airways ventilation heterogeneity; S_{cond} : conducting airways ventilation heterogeneity; TO: lung turnover.

Overestimation of FRC and LCI by the Exhalyzer system was first suggested when comparing the use of sulfur hexafluoride (SF₆) to N₂ as a tracer gas. JENSEN *et al.* [21] found in children with CF that N₂ resulted in higher estimates of FRC and LCI compared to SF₆ obtained using mass spectrometry. In addition to differences in the diffusion front, the assumption was that back-secretion of N₂ from the tissues probably contributed to overestimation of FRC by MBNW. In fact, subsequent device comparison studies in adults tended to show FRC by the Exhalyzer D system to be larger than FRC_{pleth} [22, 23]. However, these findings are at odds with the idea that gas dilution techniques during tidal breathing can only access communicating lung units and not trapped gas compartments, such that the estimated FRC in disease should be lower than FRC obtained from plethysmography, which includes all compressible gas volume within the lungs. Prior to reanalysis, there were no differences between FRC_{pleth} and FRC_{MBNW} in smokers, patients with asthma or in health but sensor error correction resulted in a significantly lower FRC_{MBNW} compared to FRC_{pleth} in all groups, more consistent with expectation. These results suggest that the sensor error explains most of the overestimation of FRC seen in the Exhalyzer device, just as SANDVIK *et al.* [13] found that sensor error correction of MBNW removed the discrepancy in FRC between N₂ and SF₆. It is unknown whether the error affects different commercially available MBW utilising O₂ and/or CO₂ sensors, a subject that warrants further investigation.

Our study is the first to demonstrate the impact of the O₂ and CO₂ sensor error correction on FRC and LCI in adults, and the first to investigate the impact on S_{cond} and S_{acin} . The effect of the sensor error on LCI and FRC has been described previously in infants and children, and our data are consistent with their findings in both magnitude and presence of proportional bias [12, 13]. The alignment of these findings is important to understand consistency in the correction algorithm. The high correlations between uncorrected and corrected values suggest that previous findings involving correlations with MBNW indices may be preserved, but the presence of significant proportional bias indicates that previous studies examining interventional effects will require reanalysis, both to reconfirm previous findings and to allow comparability with future studies. Although a recent reanalysis of CF clinical trials was reassuring to a degree and showed that while treatment effects were reduced, they were maintained following sensor correction [14].

Previous studies investigating the effect of sensor error correction were in infants and children [12–14], hence they did not include a comparison of phase III slope indices S_{cond} and S_{acin} , which are not as commonly used in paediatric compared to adult age groups. S_{cond} is calculated as the slope of the plot of normalised phase III slope (SnIII) versus lung turnover (TO), between TO 1.5 and 6, where SnIII is the slope of phase III in the N₂ expirogram normalised by mean or end-tidal N₂ concentration. Errors in S_{cond} arise from two sources. First, the observed overestimation of FRC results in a lower TO, shortening the SnIII versus TO plot leftward and slightly elevating S_{cond} . Second, as the washout progresses towards higher values of TO, the phase III slope is normalised by an increasingly overestimated N₂ concentration. The effect is a less steep SnIII versus TO plot, thus lowering calculated S_{cond} . These effects are demonstrated in figure 4, where corrected SnIII values for three different patients are increased, resulting in larger S_{cond} as calculated between TO 1.5 and 6. In particular, the dominant effect of the impact on SnIII

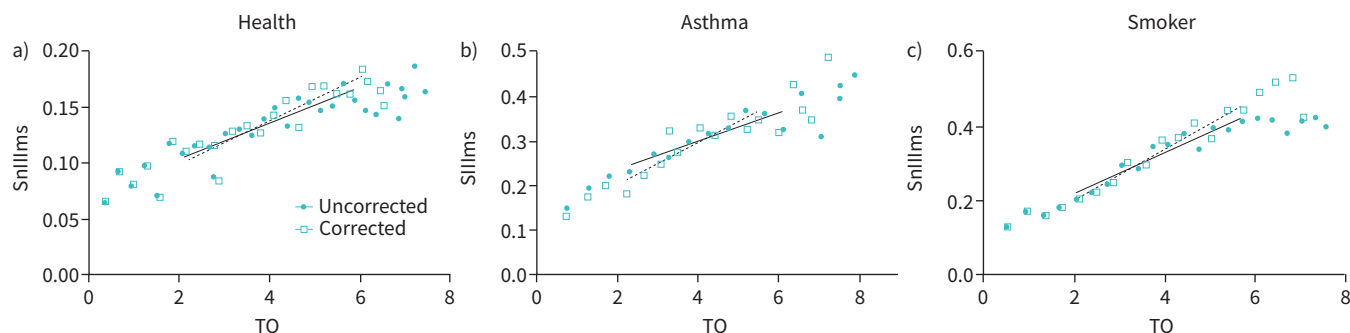


FIGURE 4 Normalised phase III slope (SnIII) versus lung turnover (TO) graphs in health (a), asthma (b) and smokers (c). Open squares represent corrected values (with sensor correction) and solid circles uncorrected values. S_{cond} is calculated as the slope of the plot of SnIII versus lung TO, between TO 1.5 and 6. Corrected SnIII values are increased resulting in larger S_{cond} as calculated between TO 1.5 and 6 in all three patient groups. The change in SnIII in the first breath was minimal, explaining the minimal effects seen in S_{acin} post-correction. SnIII_m: slope of alveolar phase (phase III) normalised by mean slope concentration.

is clearly seen in panel 4C where uncorrected SnIII values deviate markedly from the corrected values at high TO. However, the change in SnIII in the first breath was minimal, both because the sensor error is smallest at high N_2 concentrations, and because the N_2 concentration used for normalisation is large at this point in the washout. Much of the effect of sensor correction on S_{acin} probably comes from propagation of the S_{cond} error into the correction applied to SnIII(1) to obtain S_{acin} [20].

Our comparison found S_{cond} to be significantly increased by the sensor error correction, and furthermore with a significant proportional bias in both health and in smokers. However, this distinction between groups is probably a manifestation of small numbers in each cohort, coupled with the inherent variability in the measurement of S_{cond} . Indeed, when the three cohorts are combined into the single dataset (Online Supplement, Figure S3), it is clear that the sensor error correction results in comparable effects on S_{cond} regardless of the underlying pathophysiology.

Correction of the sensor error resulted in minimal impact on within-session and between-session variability in health. Within-session CoV remained small in FRC and LCI, demonstrating that trial repeatability for MBNW was high even after reanalysis. Similarly, all parameters had minimal change in between-session difference, with a small change in the LoA for LCI, which is probably attributed to the overall reduction in LCI caused by correction. Furthermore, we also reanalysed previously published data collected using both free breathing and controlled breathing [15, 16]. Sensor error correction did not affect the between-protocol differences in S_{cond} and S_{acin} in health [15] or asthma [16], nor their dependences on the breathing pattern.

This study is limited by the selection criteria for the previous studies that we have included for reanalysis. Patients with asthma had relatively mild disease, and smokers were recruited for a larger study based on having abnormal ventilation heterogeneity as described in the Methods, and thus may not be representative of the population in general. Future reanalysis of MBNW data is required to understand the effect of sensor error correction in disease more broadly and the associated implications. Moreover, in our reanalysis, we chose to retain the same breath exclusions and other settings in the original analysis, to allow us to solely examine the effect of corrected N_2 concentrations on MBNW indices. There is a chance that the adjusted washout traces may result in, for example, changes in the shape of the expirogram, which may result in different quality control decisions by a manual operator. However, we attempted to maintain a consistent approach for quality control. The new software version also includes changes in the way in which delay between flow and gas concentration sampling is calculated, to include a dynamic delay correction [24], which was not implemented in our reanalysis, but which may be a factor affecting comparability between old and new studies in the literature involving the Exhalyzer D. This was intentionally done to focus on the effects of the cross-talk sensor error correction.

In conclusion, our study is the first to describe the effect of O_2 and CO_2 sensor error correction on the Exhalyzer D MBNW system in adults, and the first to investigate the effect on S_{cond} and S_{acin} . Our results confirm the LCI and FRC effects seen in infants and children and demonstrate strong underestimation with proportional bias for S_{cond} , with errors up to 50% observed in those with the greatest ventilation heterogeneity, but minimal effects on S_{acin} . While the discovery of the error is an important step towards

improved accuracy of MBNW devices, it also represents an important hurdle for ongoing efforts to support MBNW as a clinical tool or an end-point for clinical studies. These findings provide important considerations for the interpretation of previously published adult MBNW studies, and those in younger age groups incorporating phase III slope analysis. The magnitude of effect supports reanalysis of that data to better understand the true findings.

Provenance: Submitted article, peer reviewed.

Acknowledgements: We would like to acknowledge the study participants for volunteering the time and effort required to conduct this study. We would also like to thank Blake Handley (Dept of Respiratory Medicine, Royal North Shore Hospital, St Leonards, NSW, Australia) and Stephen Milne (Centre for Heart Lung Innovation and Division of Respiratory Medicine, University of British Columbia, Vancouver, Canada) for assistance with the healthy and asthma datasets, and Prof. Christine Jenkins (ECOS Study; Dept of Thoracic Medicine, Concord Hospital, Concord, Australia and The George Institute for Global Health, Sydney, Australia) for provision of the smokers dataset used for this study.

Data sharing statement: The study protocol and raw data that support the findings of this study are available from the corresponding author upon reasonable request.

Conflict of interest: No conflicts of interest, financial or otherwise, relating to this study are declared by the authors.

Support statement: S. Rutting was supported by the Berg Family Foundation. The smokers dataset was from a larger study funded by an investigator-initiated grant from GlaxoSmithKline, Australia. Funding information for this article has been deposited with the Crossref Funder Registry.

References

- 1 Verbanck S, Schuermans D, Vincken W. Inflammation and airway function in the lung periphery of patients with stable asthma. *J Allergy Clin Immunol* 2010; 125: 611–616.
- 2 Verbanck S, Schuermans D, Van Muylem A, et al. Conductive and acinar lung-zone contributions to ventilation inhomogeneity in COPD. *Am J Respir Crit Care Med* 1998; 157: 1573–1577.
- 3 Zimmermann SC, Tonga KO, Thamrin C. Dismantling airway disease with the use of new pulmonary function indices. *Eur Respir Rev* 2019; 28: 180122.
- 4 Ratjen F, Davis SD, Stanojevic S, et al. Inhaled hypertonic saline in preschool children with cystic fibrosis (SHIP): a multicentre, randomised, double-blind, placebo-controlled trial. *Lancet Respir Med* 2019; 7: 802–809.
- 5 Ratjen F, Hug C, Marigowda G, et al. Efficacy and safety of lumacaftor and ivacaftor in patients aged 6–11 years with cystic fibrosis homozygous for F508del-CFTR: a randomised, placebo-controlled phase 3 trial. *Lancet Respir Med* 2017; 5: 557–567.
- 6 Farah CS, King GG, Brown NJ, et al. Ventilation heterogeneity predicts asthma control in adults following inhaled corticosteroid dose titration. *J Allergy Clin Immunol* 2012; 130: 61–68.
- 7 Farah CS, King GG, Brown NJ, et al. The role of the small airways in the clinical expression of asthma in adults. *J Allergy Clin Immunol* 2012; 129: 381–387, 387.e1.
- 8 Tang FSM, Rutting S, Farrow CE, et al. Ventilation heterogeneity and oscillometry predict asthma control improvement following step-up inhaled therapy in uncontrolled asthma. *Respirology* 2020; 25: 827–835.
- 9 Farah CS, Badal T, Reed N, et al. Mepolizumab improves small airway function in severe eosinophilic asthma. *Respir Med* 2019; 148: 49–53.
- 10 Jetmalani K, Thamrin C, Farah CS, et al. Peripheral airway dysfunction and relationship with symptoms in smokers with preserved spirometry. *Respirology* 2018; 23: 512–518.
- 11 Jetmalani K, Chapman DG, Thamrin C, et al. Bronchodilator responsiveness of peripheral airways in smokers with normal spirometry. *Respirology* 2016; 21: 1270–1276.
- 12 Wyler F, Oestreich MH, Frauchiger BS, et al. Correction of sensor crosstalk error in Exhalyzer D multiple-breath washout device significantly impacts outcomes in children with cystic fibrosis. *J Appl Physiol (1985)* 2021; 131: 1148–1156.
- 13 Sandvik RM, Gustafsson PM, Lindblad A, et al. Improved agreement between N(2) and SF(6) multiple-breath washout in healthy infants and toddlers with improved EXHALYZER D sensor performance. *J Appl Physiol (1985)* 2021; 131: 107–118.
- 14 Robinson PD, Jensen R, Seeto RA, et al. Impact of cross-sensitivity error correction on representative nitrogen-based multiple breath washout data from clinical trials. *J Cyst Fibros* 2021; 21: e204–e207.
- 15 Handley BM, Jeagal E, Schoeffel RE, et al. Controlled versus free breathing for multiple breath nitrogen washout in healthy adults. *ERJ Open Res* 2021; 7: 00435–2020.

- 16 Handley BM, Bozier J, Jeagal E, *et al.* Controlled versus free breathing for multiple breath nitrogen washout in asthma. *ERJ Open Res* 2021; 00487-2021.
- 17 Quanjer PH, Stanojevic S, Cole TJ, *et al.* Multi-ethnic reference values for spirometry for the 3-95-yr age range: the global lung function 2012 equations. *Eur Respir J* 2012; 40: 1324–1343.
- 18 Quanjer PH, Tammeling GJ, Cotes JE, *et al.* Lung volumes and forced ventilatory flows. *Eur Respir J* 1993; 6: Suppl. 16, 5–40.
- 19 Verbanck S, Schuermans D, Paiva M, *et al.* Mitigating increased variability of multiple breath washout indices due to tidal breathing. *Eur Respir J* 2021; 57: 2002765.
- 20 Robinson PD, Latzin P, Verbanck S, *et al.* Consensus statement for inert gas washout measurement using multiple- and single-breath tests. *Eur Respir J* 2013; 41: 507–522.
- 21 Jensen R, Stanojevic S, Gibney K, *et al.* Multiple breath nitrogen washout: a feasible alternative to mass spectrometry. *PLoS One* 2013; 8: e56868.
- 22 Poncin W, Singer F, Aubriot AS, *et al.* Agreement between multiple-breath nitrogen washout systems in children and adults. *J Cyst Fibros* 2017; 16: 258–266.
- 23 Tonga KO, Robinson PD, Farah CS, *et al.* In vitro and in vivo functional residual capacity comparisons between multiple-breath nitrogen washout devices. *ERJ Open Res* 2017; 3: 00011-2017.
- 24 Gustafsson PM, Bengtsson L, Lindblad A, *et al.* The effect of inert gas choice on multiple breath washout in healthy infants: differences in lung function outcomes and breathing pattern. *J Appl Physiol (1985)* 2017; 123: 1545–1554.