



Early View

Original article

Microbial and clinical factors are related to recurrence of symptoms after childhood lower respiratory tract infection

Emma M. de Koff, Wing Ho Man, Marlies A. van Houten, Arine M. Vlieger, Mei Ling J.N. Chu, Elisabeth A.M. Sanders, Debby Bogaert

Please cite this article as: de Koff EM, Man WH, van Houten MA, *et al.* Microbial and clinical factors are related to recurrence of symptoms after childhood lower respiratory tract infection. *ERJ Open Res* 2021; in press (<https://doi.org/10.1183/23120541.00939-2020>).

This manuscript has recently been accepted for publication in the *ERJ Open Research*. It is published here in its accepted form prior to copyediting and typesetting by our production team. After these production processes are complete and the authors have approved the resulting proofs, the article will move to the latest issue of the ERJOR online.

Copyright ©The authors 2021. This version is distributed under the terms of the Creative Commons Attribution Non-Commercial Licence 4.0. For commercial reproduction rights and permissions contact permissions@ersnet.org

Microbial and clinical factors are related to recurrence of symptoms after childhood lower respiratory tract infection

Emma M. de Koff^{1,2}, Wing Ho Man^{1,3}, Marlies A. van Houten^{1,4}, Arine M. Vlieger⁵, Mei Ling J.N. Chu², Elisabeth A.M. Sanders^{2,6}, Debby Bogaert^{2,7}

1. Spaarne Academy, Spaarne Gasthuis, Hoofddorp and Haarlem, Netherlands
2. Department of Paediatric Immunology and Infectious Diseases, Wilhelmina Children's Hospital and University Medical Centre Utrecht, Utrecht, Netherlands
3. Department of Paediatrics, Willem-Alexander Children's Hospital and Leiden University Medical Centre, Leiden, Netherlands
4. Department of Paediatrics, Spaarne Gasthuis, Hoofddorp and Haarlem, Netherlands
5. Department of Paediatrics, St Antonius Ziekenhuis, Nieuwegein, Netherlands
6. Centre for Infectious Disease Control, National Institute for Public Health and the Environment, Bilthoven, Netherlands
7. Medical Research Council and University of Edinburgh Centre for Inflammation Research, Queen's Medical Research Institute, University of Edinburgh, Edinburgh, UK

Corresponding author: Prof. dr. Debby Bogaert, 47 Little France Crescent, Edinburgh, EH16 4TJ, United Kingdom, tel. +44 (0) 131 242 6352, d.bogaert@ed.ac.uk.

Word count: 3779

This article has an online data supplement.

Take home message (256/256 characters):

Composition of nasopharyngeal microbiota during LRTI in children is related to recurring respiratory symptoms in the next months, as well as to incomplete microbiota recovery. Future research may pinpoint host and microbial predictors of clinical outcomes.

ABSTRACT

Childhood lower respiratory tract infections (LRTI) are associated with dysbiosis of the nasopharyngeal microbiota, and persistent dysbiosis following the LRTI may in turn be related to recurrent or chronic respiratory problems.

Therefore, we aimed to investigate microbial and clinical predictors of early recurrence of respiratory symptoms as well as recovery of the microbial community following hospital admission for LRTI in children.

To this end, we collected clinical data and characterized the nasopharyngeal microbiota of 154 children (4 weeks-5 years old) hospitalized for a LRTI (bronchiolitis, pneumonia, wheezing illness, or mixed infection) at admission and 4-8 weeks later. Data were compared to 307 age-, gender- and time-matched healthy controls.

During follow-up, 66% of cases experienced recurrence of (mild) respiratory symptoms. In cases with recurrence of symptoms during follow-up, we found distinct nasopharyngeal microbiota at hospital admission, with higher levels of *Haemophilus influenzae/haemolyticus*, *Prevotella oris* and other gram-negatives and lower levels of *Corynebacterium pseudodiphtheriticum/propinquum* and *Dolosigranulum pigrum* compared to healthy controls. Furthermore, in cases with recurrence of respiratory symptoms, recovery of the microbiota was also diminished. Especially in cases with wheezing illness we observed a high rate of recurrence of respiratory symptoms, as well as diminished microbiota recovery at follow-up.

Together, our results suggest a link between the nasopharyngeal microbiota composition during LRTI and early recurrence of respiratory symptoms, as well as diminished microbiota recovery after 4-8 weeks. Future studies should investigate whether (speed of) ecological recovery following childhood LRTI is associated with long-term respiratory problems.

Word count: 244

INTRODUCTION

Lower respiratory tract infections (LRTIs) remain a leading cause of illness in early childhood, and are a risk factor for the development of recurrent and even chronic respiratory problems [1–3]. For instance, approximately half of infants with bronchiolitis will subsequently experience recurrent wheezing episodes [4], which may persist for years and might eventually develop into asthma [5]. Also, health-related quality of life may remain substantially decreased for months or even years following a LRTI in both children [6] and adults [7]. Causes of respiratory problems following a LRTI remain largely unknown, but emerging evidence suggests that the upper respiratory tract (URT) microbiota may play a role [8, 9].

As expected, during a LRTI, the microbial communities of the respiratory tract differ strongly from those of healthy, matched controls, with increased presence of potential pathogens ('pathobionts') like *Streptococcus pneumoniae* and *Haemophilus influenzae*, and decreased presence of presumed beneficial bacteria like *Corynebacterium* and *Dolosigranulum* [10–13]. However, microbiota 'recovery' following a LRTI is not extensively studied. One case-control study has shown that the abundance of pathobiont *Haemophilus* decreased to normal levels within a month [11]. Conversely, a longitudinal study demonstrated persistent enrichment with *Moraxella* up to 6 months after a LRTI [14]. Furthermore, in a prospective cohort of infants with bronchiolitis, increased nasal levels of *Moraxella* and *Streptococcus* in the weeks directly following hospitalization were associated with recurrent wheeze at the age of 3 years, suggesting that persistent microbial 'dysbiosis' may contribute to long-term respiratory outcomes following a LRTI [8].

Using a matched case-control design, we have previously demonstrated significant aberrations of the nasopharyngeal microbial community at time of hospital admission for childhood LRTI, when compared to asymptomatic age-, gender- and time-matched controls [13]. Currently, we extend our analysis to 4-8 weeks follow-up, and demonstrate that early

recurrence of respiratory symptoms is related to the nasopharyngeal microbial community composition at times of LRTI as well as to impaired microbiota recovery following LRTI.

METHODS

We refer to our previous publication on this cohort [13] for details on study design and microbiota analysis, and to the online data supplement for details on statistical analysis. Data are available from the NCBI Sequence Read Archive database (BioProject ID PRJNA428382).

Study design

We enrolled 154 cases aged 4 weeks to 5 years old, hospitalized for a LRTI, and 307 age-, time- and gender-matched, healthy controls from the community (1:2 ratio except for 1 case). Age, season and gender are known to influence microbiota composition [15–17], and were therefore used as matching criteria to avoid confounding. Nasopharyngeal swabs were obtained from cases at hospital admission and 4-8 weeks after discharge during a follow-up visit to the outpatient clinic or at home. Nasopharyngeal swabs from controls were obtained once during a home visit within 2 weeks from case admission (**Figure S1**). Extensive information on medical history, lifestyle and environment was collected from all participants using questionnaires. From cases, we also collected clinical data during admission and at follow-up. Two expert paediatricians independently grouped cases into 3 major LRTI phenotypes (pneumonia, bronchiolitis, and wheezing illness) based on medical records. Cases with an unclear or overlapping phenotype were classified as mixed infection. Recurrence of respiratory symptoms was defined as a parent-reported new episode of one or more respiratory symptoms (including rhinorrhoea, wheezing, earache, sore throat, coughing, hoarseness, and 'other' respiratory symptoms) between hospital discharge and the follow-up visit 4-8 weeks later. The study was approved by the Dutch National Ethics Committee (NL42019.094.12). Written informed parental consent was obtained from all participants.

Microbiota analysis

Bacterial DNA was isolated and quantified as previously described [17–19], with the following minor modifications: 16S Real Time PCR was conducted using TAMRA probe 16S-P1 (FAM-ATT AGA TAC CCT GGT AGT CCA-TAMRA) (Life Technologies, Carlsbad, CA) and a PCR mixture containing 12.5 µl 2x Taqman universal master mix (Life Technologies, Carlsbad, CA), 1 µl of each primer (10 µM), 1 µl of the probe (5 µM), 6.5 µl HPLC graded water (InstruChemie, Delfzijl, Netherlands) and 3 µl of template DNA, on the StepOnePlus System (Applied Biosystems, Foster City, CA). Almost all samples (>99%) contained sufficient DNA for reliable analysis (**Figure S1**). Following, amplicon libraries of the 16S-rRNA gene (V4 region) were generated, and sequencing was executed on the Illumina MiSeq platform (Illumina Inc., San Diego, CA). Bioinformatic processing was performed as previously described [20, 21]. Contaminating sequences were identified using the *decontam* R-package, using their relation to bacterial biomass (frequency method) and their presence/absence in samples versus DNA isolation controls and PCR blanks (prevalence method) [22]. In total, 21 OTUs were identified as contaminants, and were removed prior to downstream analyses (**Table S1**). Each operational taxonomic unit (OTU) was assigned taxonomy and a rank number based on its abundance. Double annotations were assigned to OTUs that could be annotated to both species. Presence of *Streptococcus pneumoniae*, *Staphylococcus aureus*, *Haemophilus influenzae* and *Moraxella catarrhalis* was confirmed by quantitative PCR. Viral presence was detected by qualitative multiplex Real Time PCR (RespiFinder SMARTfast 22, Maastricht, Netherlands).

Statistical analysis

Data analysis was performed in R version 3.4.3. Case-control comparisons accounted for matching. P-values or Benjamini-Hochberg adjusted q-values below 0.050 were considered statistically significant. Chi-square and Wilcoxon tests were used to compare host characteristics between cases with and without recurrence of respiratory symptoms during follow-up. Independent relationships between antibiotic treatment, LRTI phenotype, age, and

recurrence of respiratory symptoms during follow-up were assessed using multivariable logistic regression, including pairwise interactions and correcting for follow-up time. Conditional logistic regression was used to compare viral presence between cases and controls.

Alpha diversity was assessed by the Chao1 index for microbial richness and the Shannon index for diversity (*phyloseq* [23]), and significance of differences between cases and controls was evaluated using linear mixed-effect models. Microbiota recovery was considered complete when the overall microbial composition was comparable between cases after 4-8 weeks follow-up and matched controls, which was evaluated by permutational analysis of variance (PERMANOVA) on the Bray-Curtis dissimilarity matrix (*vegan* [24]). We similarly analysed differences in microbial diversity at time of admission between cases with and without subsequent recurrence of respiratory symptoms, adjusting for age, gender and month of hospital admission.

Discriminant OTUs between cases and controls were identified by combining significant results from *metagenomeSeq* analysis [25] and cross-validated *VSURF* analysis [26], which were then filtered at a fold change (FC) of above 1.5 or below 0.5 (i.e. a 50% change).

Stratified analyses were performed of microbiota recovery in relation to recurrence of respiratory symptoms during follow-up, LRTI phenotype, antibiotic treatment, and viral presence. In these stratified analyses, differential abundance testing was limited to the top 100 highest-ranked OTUs, because false positive results in low abundant OTUs are a known risk of *metagenomeSeq* analysis with smaller group sizes [27].

RESULTS

Clinical and microbial factors during LRTI were associated with early recurrence of respiratory symptoms

Cohort characteristics were detailed previously [13]. Follow-up data were available for 149 (97%) cases, with a median follow-up time of 39 days [IQR 35-46] (Figure S1). In the 4-8 weeks following hospital discharge, 98 (66%) cases experienced recurrence of respiratory symptoms (from here on called recurrence of symptoms) (Table S2). Of these cases, 57 (58%) specified at least 2 different respiratory symptoms, and 47 (48%) also reported fever (>38°C). Furthermore, 41 cases (42%) consulted a physician, and 8 cases (8%) received antibiotics for these symptoms. Follow-up time was significantly longer in cases with recurrence of respiratory symptoms ($p=0.015$). Cases with and without recurrence of symptoms during follow-up were not significantly different in terms of baseline characteristics including age, lifestyle and environmental factors, medical history, and clinical findings such as LRTI phenotype and antibiotic treatment (**Table 1**). However, when age, LRTI phenotype and antibiotic treatment were included in a multivariable model as predictors of recurrence, we found a borderline significant, independent association between a diagnosis of wheezing illness and an increased rate of subsequent recurrence of respiratory symptoms ($\beta=1.19$ compared to pneumonia, 95% CI -0.097-2.54, $p=0.074$). Furthermore, an independent positive association was found between antibiotic treatment during admission and subsequent recurrence of respiratory symptoms ($\beta=2.47$, 95% CI 0.52-4.86, $p=0.023$), but this effect diminished with increasing age (interaction age and antibiotics: $\beta=-0.078$, 95% CI -0.15- -0.013, $p=0.028$) (**Table S3**). Viral presence, number of viruses and detection of respiratory syncytial virus (RSV) or Human rhinovirus (HRV) was not significantly different between cases with and without recurrence (**Table 1**).

In this cohort, significant differences in the microbial community composition between cases at admission and controls were previously shown, with especially increased abundance of pathobionts *Haemophilus influenzae/haemolyticus* and *S. pneumoniae*, and decreased abundance of presumed beneficial bacteria like *Moraxella catarrhalis/nonliquefaciens*, *Dolosigranulum pigrum* and *Corynebacterium pseudodiphtheriticum/propinquum* [13]. Here, a modestly lower Shannon diversity at time of admission was related to a higher rate of

recurrence of symptoms, even after adjusting for age, gender and month of hospital admission ($p=0.049$; **Figure 1A**). Furthermore, the overall microbial community composition at time of admission was significantly different between cases with versus cases without subsequent recurrence of symptoms, independent of age, gender and month of hospital admission ($R^2: 0.020$, $p=0.012$) (**Figure 1B**), though not correlated with the severity of recurrence of symptoms (i.e. number of symptoms (1 or >1), presence of fever, or the parents' decision to consult a physician during follow-up (data not shown)). Cases with recurrence of symptoms had higher abundances of gram-negatives like *H. influenzae/haemolyticus*, *Prevotella oris*, *Actinomyces* and *Fusobacterium* species and lower abundances of health-associated *C. pseudodiphtheriticum/propinquum* and *D. pigrum* at time of admission compared to controls. On the other hand, cases without recurrence had higher abundances of amongst others gram-positives *Staphylococcus aureus/epidermidis* and *S. pneumoniae* at admission compared to controls (**Table 2** and **Figure S2**).

Nasopharyngeal microbiota and viral profiles after recovery from LRTI

We also aimed to study remaining differences in microbial community diversity and composition between recovered cases and controls. In general, samples obtained 4-8 weeks after hospital discharge showed significantly higher microbial richness in (former) cases when compared to controls ($p=0.042$), while Shannon diversity and biomass were comparable (**Figure S3**). Furthermore, despite the observed major differences in the overall microbial community composition at time of infection, after 4-8 weeks the microbiota of recovered cases had become more similar to controls, and only a small, non-significant difference remained ($R^2: 0.004$, $p=0.080$; **Figure 2A-B**). On the OTU level, we observed 15 OTUs that were significantly differentially abundant between recovered cases and controls (**Table 3** and **Figure S4**). Of these, *Moraxella* species and *Helcococcus* were already underrepresented at admission, and remained underrepresented in recovered cases,

whereas various gram-negative species including *H. influenzae/haemolyticus*, *P. oris*, and *Neisseria lactamica* remained overrepresented in recovered cases compared to controls.

Assessment of microbiota recovery in relation to recurrence of respiratory symptoms, showed that when compared to matched controls, cases with recurrence of symptoms during follow-up had a significantly higher microbial richness at the end of follow-up ($p=0.034$; **Figure S5A**). This difference in microbial richness was not present between cases without recurrence of symptoms and their matched controls. Also, on microbial community composition level, the microbiota composition had failed to normalize in cases with recurrence of respiratory symptoms during follow-up ($R^2: 0.008$, $p=0.028$), while in cases without recurrence the microbiota were comparable to controls ($R^2: 0.005$, $p=0.50$). Especially the abundances of *H. influenzae/haemolyticus*, *Neisseria*, *P. oris*, and *Porphyromonas* were persistently increased after recovery in cases with recurrence of symptoms during follow-up compared to controls, while in cases without recurrence, abundance of *S. aureus/epidermidis* and *N. lactamica* were increased after recovery compared to controls (**Figure S5B**).

Viral presence at time of admission and after recovery was available for 70 cases and for 139 corresponding controls. As described previously [13], 97% of cases tested positive for any virus at time of admission versus 85% of controls ($p=0.019$). At follow-up, 91% of (former) cases were virus-positive, which was not significantly different from controls. RSV detection was higher in cases at time of admission compared to controls (40% vs. 4%; $p<0.001$), but had normalized after recovery (3%). Interestingly, in recovered cases, HRV detection was more common (80%) than at time of admission (57%, $p=0.006$), though comparable to controls (70%; **Figure S6**). Detection of other respiratory viruses was low and not significantly different between cases and controls following recovery.

Microbiota recovery depends on LRTI phenotype, but not on antibiotic treatment or type of virus

Next, we used stratified analyses to investigate whether microbiota recovery was related to antibiotic treatment, LRTI phenotype or viral presence at time of admission. In total, 43 (28%) cases were treated with antibiotics (33 beta-lactam, 10 macrolide) during admission. Interestingly, only cases not treated with antibiotics showed significantly higher microbial richness after follow-up compared to controls ($p=0.001$), while no differences in Shannon diversity were observed in either group compared to their respective controls (**Figure S7A**). Microbiota composition at follow-up also showed little difference between both antibiotic-treated and not antibiotic-treated cases and their respective controls (treated cases versus controls $R^2: 0.007$, $p=0.47$; non-treated cases versus controls $R^2: 0.005$, $p=0.17$).

Regarding LRTI phenotype, 57 (37%) cases were classified as bronchiolitis, 37 (24%) as pneumonia, 34 (22%) as wheezing illness, and 26 (17%) as mixed infection. Only (former) bronchiolitis cases had significantly increased microbial richness after follow-up compared to matched controls ($p=0.013$), though a similar trend was observed for former wheezing illness cases ($p=0.088$; **Figure S7B**). Furthermore, only (former) wheezing illness cases still showed a trend towards a different overall microbial community composition at follow-up compared to their respective controls ($R^2: 0.023$, $p=0.072$; **Figure 3**). As aforementioned, cases with wheezing illness had the highest incidence of recurrence of respiratory symptoms, while cases with pneumonia had the lowest incidence (**Table 1**). On OTU level, we observed that cases recovered from wheezing illness had increased levels of *Streptococcus anginosus*, and gram-negatives like *P. oris*, *Porphyromonas* and *Neisseria*, which were all also associated with recurrence (**Figure 4**). By contrast, cases recovered from pneumonia had increased levels of *Klebsiella*, *Neisseriaceae*, and gram-positives *S. aureus/epidermidis* and *Kocuria*, possibly related to antibiotic selection (**Figure S8**).

Finally, we stratified the analysis based on the most prevalent viruses at time of LRTI, i.e. RSV and HRV, which were detected in 72 (47%) and 73 (47%) cases, respectively, to rule out virus-mediated effects on microbiota recovery. Cases recovered from a RSV-associated LRTI had no significant differences in microbial richness, diversity or the overall microbial

composition compared to their matched controls ($R^2=0.003$, $p=0.624$). Cases recovered from a HRV-associated LRTI also showed no significant differences in overall microbial composition compared to controls ($R^2=0.008$, $p=0.165$), though they had a slightly higher microbial richness upon recovery, which tended towards significance ($p=0.070$; **Figure S7C**).

DISCUSSION

LRTI is strongly associated with dysbiosis of the nasopharyngeal microbiota [13]. Here, we found in children hospitalized for acute LRTI that lower microbial diversity and the overall microbial community composition in the nasopharynx were modestly associated with subsequent recurrence of even very mild respiratory symptoms within 1-2 months. Specifically, we identified gram-negatives like *H. influenzae/haemolyticus*, *P. oris* and *Actinomyces* species as potential biomarkers of an increased risk of recurrence of respiratory symptoms, and gram-positives like *S. aureus/epidermidis* and *S. pneumoniae* as potential biomarkers of a reduced risk.

These findings add to a small but growing body of literature suggesting that host-microbial interactions during and following acute (L)RTI may contribute to short- and long-term respiratory outcomes. Previously, Neumann et al. found in noses of infants with their first RTI that lower microbial diversity and increased levels of bacterial families Moraxellaceae or Streptococcaceae were associated with persistent respiratory symptoms [28]. Also in the nasal niche, Mansbach et al. related persistently increased levels of *Moraxella* and *Streptococcus* in the weeks following hospitalization for bronchiolitis in infancy to persistent wheeze at the age of 3 years [8]. In case of RSV infection, increased nasopharyngeal levels of gram-negatives including *H. influenzae* have been associated with a pro-inflammatory systemic immune response with enhanced neutrophil recruitment and activation, and increased disease severity [29, 30]. Correlates with clinical outcomes during recovery remain

unknown, but a severity-dependent relationship between RSV bronchiolitis and the risk of recurrent wheezing and asthma has been described [31]. Moreover, *Haemophilus*-dominated nasopharyngeal microbiota during RSV infection has also been related to increased viral load [11] and delayed clearance [32], which might also contribute to persistent inflammation, slower recovery and more respiratory morbidity. Finally, in healthy infants, increased influx into the nasopharynx of gram-negatives typically found in the mouth, like *Prevotella*, *Neisseria* and *Fusobacterium*, has also been associated with higher susceptibility to RTIs in general [20, 33]. Alternatively, gram-positive commensals might dampen inflammatory responses. For instance, *S. epidermidis* was shown to enhance mucosal innate immune responses in the nose and to thereby confer resistance to viral infection [34]. Moreover, dominance of *Corynebacterium* and *Dolosigranulum* in the infant nasopharyngeal microbiota has been related to decreased incidence of RTIs [35]. Future studies should therefore investigate whether antibiotic treatment targeted at gram-negatives and/or preservation or supplementation of gram-positive commensals may prevent recurrence of respiratory symptoms after LRTI and improve long-term respiratory outcomes.

In general, we observed that the nasopharyngeal microbiota had recovered 4-8 weeks after hospitalization for LRTI, though subtle differences remained including a persistently lower abundance of *Moraxella* than seen in healthy controls. Remarkably, this is opposite to observations by Teo and colleagues [14]. This study had an unmatched design, later timing of post-LRTI sampling and a different geographic location, but the discrepancy with our findings might also reflect biological differences between their cohort at high risk for atopy and our unselected cohort. In line with our findings, Kaul and colleagues recently demonstrated that in some adult patients with acute influenza infection, microbial communities returned to a healthy state within 22 days from hospital admission [36]. It thus appears that the URT microbiota are resilient, but the speed of recovery differs between individuals. In addition, we observed that children with early recurrence of respiratory symptoms following LRTI also had diminished microbiota recovery, despite a longer follow-

up duration and more time for the microbiota to recover. The association between longer follow-up duration and recurrence of respiratory symptoms may be directly linked, though also explained by the fact that children had to be asymptomatic at the time of sampling, and as a consequence the follow-up visit was postponed when symptoms were present at that moment. Irrespectively, given the high incidence of symptom recurrence in our cohort, we theorize that while the microbiota gradually recover following LRTI, resistance to viral infection or bacterial pathobiont acquisition and overgrowth might remain diminished for some time, resulting in a (temporarily) elevated risk of new infections upon pathobiont exposure. Aberrant airway immune profiles in asymptomatic neonates and during RSV infection were previously associated with presence and abundance of gram-negatives colonizing the respiratory tract [29, 37, 38], and might mediate this association, but this remains to be investigated. An alternative hypothesis is, however, that children may be genetically predisposed to both microbiota shifts and development of RTIs. For example, genetic variants were previously shown to increase susceptibility to otitis media by modifying the middle ear microbiome [39]. This would mean our findings are correlative in nature more than causally linked. Future studies should therefore take genetic factors into consideration to understand the potential mechanisms underpinning our findings.

Importantly, we observed early recurrence of respiratory symptoms followed by diminished microbiota recovery especially in children with wheezing illness, whereas microbiota changes during LRTI were previously shown to be phenotype-independent [13]. Together, our findings suggest that especially in children with inflammation-driven illness, the nasopharyngeal microbiota may have more limited property to recover to a state comparable to healthy, matched controls. This is in line with other observational studies where LRTIs accompanied by wheezing symptoms were particularly associated with aberrant respiratory microbiota development [14] and with later-life persistent wheeze and development of asthma [2, 3]. We speculate that wheezing illness patients, who were older than patients with a different LRTI phenotype, may have had a more elaborate medical history with LRTIs and atopic

symptoms, which may have resulted in reduced resilience of the microbiota. Alternatively, wheezing illness patients often received treatment with inhaled corticosteroids upon hospital discharge, which might also have affected microbiota recovery [40, 41]. Unfortunately, limited power hampered us to study the effect of inhaled corticosteroids on the respiratory microbiota and its recovery. Antibiotic-treated patients also had an increased risk of subsequent recurrence, particularly the younger ones. Dutch physicians tend to reserve antibiotic treatment for the more severely ill patients. Therefore, we cannot rule out that this correlation between antibiotic treatment and recurrence might be influenced by more severe disease and accompanying inflammation. Following, the restorative capacity of the nasopharyngeal microbiota appeared in general not related to antibiotic treatment, though we had insufficient power to test if younger antibiotic-treated children may be more prone to prolonged microbiota disturbance, as has been suggested in previous reports [42, 43]. Finally, the type of virus detected at time of admission seemed unrelated to recurrence of respiratory symptoms and microbiota recovery in this cohort, despite known relationships between LRTIs associated with RSV or HRV and chronic respiratory morbidity [44].

Strengths of our study include the strictly matched case-control design that allowed us to preclude bias from age, gender and seasonality. Furthermore, inclusion of children up to 5 years old, hospitalized for all LRTI phenotypes allowed us to perform in-depth analyses. However, several limitations need to be acknowledged. We were unable to directly study the lung microbiota during recovery, but the high concordance between the microbiota in nasopharyngeal and endotracheal samples at time of LRTI in young children implies that the nasopharyngeal microbiota provides a valid proxy [13]. Furthermore, follow-up of cases entailed only one timepoint, and therefore, we could not distinguish at what pace microbial recovery occurred, and whether microbial recovery was still ongoing. Follow-up duration also varied and was different between cases with and without recurrence. However, since the microbiota of cases with recurrence had even more time to recover, this strengthens the likelihood that recurrence of respiratory symptoms following LRTI is associated with

diminished microbiota recovery. Lastly, for our analyses of recurrence we relied on parental report of respiratory symptoms since hospital discharge, which may have introduced recall bias.

In conclusion, our results suggest that the composition of the nasopharyngeal microbiota during acute LRTI in children may increase susceptibility to new respiratory symptoms in the months following, while the microbiota gradually recover. Future prospective studies with higher resolution and longer follow-up duration, especially focused on recovery from LRTI in high-risk groups of recurrent or chronic respiratory morbidity, are required to confirm and nuance our findings, and should strive to combine host and microbial factors into prediction models of (long-term) clinical outcomes. The current work may be a stepping stone to improved understanding of respiratory outcomes after childhood LRTI and potentially provide input for clinical studies on methods to alleviate recurrent respiratory problems.

ACKNOWLEDGEMENTS

We thank the participating children and their families. We also thank all the members of the research team at Spaarne Gasthuis Academy, the paediatricians at Spaarne Gasthuis, the laboratory staff, the Streeklaboratorium Haarlem, the GGD Kennemerland, and the JGZ Kennemerland for their support.

CONFLICT OF INTEREST STATEMENT

The authors declare no conflict of interest related to the content of this manuscript.

FUNDING SOURCES

This work was supported in part by The Netherlands Organization for Scientific research (NWO-VIDI; grant 91715359) and CSO/NRS Scottish Senior Clinical Fellowship award (SCAF/16/03). The study was co-sponsored by the Spaarne Hospital Haarlem and the UMC Utrecht, The Netherlands.

REFERENCES

1. Kusel MM, de Klerk NH, Keadze T, Vohma V, Holt PG, Johnston SL, Sly PD. Early-life respiratory viral infections, atopic sensitization, and risk of subsequent development of persistent asthma. *Journal of Allergy and Clinical Immunology* 2007; 119: 1105–1110.
2. Oddy WH, de Klerk NH, Sly PD, Holt PG. The effects of respiratory infections, atopy, and breastfeeding on childhood asthma. *European Respiratory Journal* 2002; 19: 899–905.
3. Jackson DJ, Gangnon RE, Evans MD, Roberg KA, Anderson EL, Pappas TE, Printz MC, Lee W-M, Shult PA, Reisdorf E, Carlson-Dakes KT, Salazar LP, DaSilva DF, Tisler CJ, Gern JE, Lemanske RF. Wheezing Rhinovirus Illnesses in Early Life Predict Asthma Development in High-Risk Children. *American Journal of Respiratory and Critical Care Medicine* 2008; 178: 667–672.
4. Bont L, van Aalderen WMC, Kimpen JLL. Long-term consequences of Respiratory Syncytial Virus (RSV) bronchiolitis. *Paediatric Respiratory Reviews* 2000; 1: 221–227.
5. Mansbach JM, Hasegawa K, Geller RJ, Espinola JA, Sullivan AF, Camargo CA, Bauer CS, Beasley AK, Boos M, Celedon J, Cohen AR, Dunn MB, Gomez MR, Inhofe NR, Iyer SS, Laham FR, Macias CG, Ong T, Pate BM, Porter SC, Puls HT, Shreffler WG, Spergel JM, Stevenson MD, Strait RT, Teach SJ, Thompson AD, Wang VJ, Waynik IY, Wu S. Bronchiolitis severity is related to recurrent wheezing by age 3 years in a prospective, multicenter cohort. *Pediatric Research* 2020; 87(3):428-430.
6. Bont L, Steijn M, van Aalderen WMC, Kimpen JLL. Impact of Wheezing after Respiratory Syncytial Virus Infection on Health-Related Quality of Life. *Pediatric Infectious Disease Journal* 2004; 23: 414–417.
7. el Moussaoui R, Opmeer BC, de Borgie CAJM, Nieuwkerk P, Bossuyt PMM, Speelman P, Prins JM. Long-term symptom recovery and health-related quality of life in patients with mild-to-moderate-severe community-acquired pneumonia. *Chest* 2006; 130: 1165–1172.
8. Mansbach JM, Luna PN, Shaw CA, Hasegawa K, Petrosino JF, Piedra PA, Sullivan AF, Espinola JA, Stewart CJ, Camargo CA. Increased *Moraxella* and *Streptococcus* species abundance after severe bronchiolitis is associated with recurrent wheezing. *Journal of Allergy and Clinical Immunology* 2020; 145: 518-527.e8.
9. Teo SM, Mok D, Pham K, Kusel M, Serralha M, Troy N, Holt BJ, Hales BJ, Walker ML, Hollams E, Bochkov YA, Grindle K, Johnston SL, Gern JE, Sly PD, Holt PG, Holt KE, Inouye M. The infant nasopharyngeal microbiome impacts severity of lower respiratory infection and risk of asthma development. *Cell host & microbe* 2015; 17: 704–715.
10. de Steenhuijsen Piters WAA, Huijskens EGW, Wyllie AL, Biesbroek G, van den Bergh MR, Veenhoven RH, Wang X, Trzciński K, Bonten MJ, Rossen JWA, Sanders EAM, Bogaert D. Dysbiosis of upper respiratory tract microbiota in elderly pneumonia patients. *The ISME Journal* 2016; 10: 97–108.
11. Ederveen THA, Ferwerda G, Ahout IM, Vissers M, de Groot R, Boekhorst J, Timmerman HM, Huynen MA, van Hijum SAFT, de Jonge MI. Haemophilus is overrepresented in the nasopharynx of infants hospitalized with RSV infection and

associated with increased viral load and enhanced mucosal CXCL8 responses. *Microbiome* 2018; 6: 10.

12. Sakwinska O, Schmid VB, Berger B, Bruttin A, Keitel K, Lepage M, Moine D, Bru CN, Brüssow H, Gervaix A. Nasopharyngeal microbiota in healthy children and pneumonia patients. *Journal of Clinical Microbiology*; 2014; 52: 1590–1594.
13. Man WH, van Houten MA, Mérelle ME, Vlieger AM, Chu MLJN, Jansen NJG, Sanders EAM, Bogaert D. Bacterial and viral respiratory tract microbiota and host characteristics in children with lower respiratory tract infections: a matched case-control study. *The Lancet Respiratory Medicine* 2019; 7: 417–426.
14. Teo SM, Tang HHF, Mok D, Judd LM, Watts SC, Pham K, Holt BJ, Kusel M, Serralha M, Troy N, Bochkov YA, Grindle K, Lemanske RF, Johnston SL, Gern JE, Sly PD, Holt PG, Holt KE, Inouye M. Airway Microbiota Dynamics Uncover a Critical Window for Interplay of Pathogenic Bacteria and Allergy in Childhood Respiratory Disease. *Cell Host and Microbe* 2018; 24: 341–352.
15. Yatsunencko T, Rey FE, Manary M, Trehan I, Dominguez-Bello MG, Contreras M, Magris M, Hidalgo G, Baldassano RN, Anokhin AP, Heath AC, Warner B, Reeder J, Kuczynski J, Caporaso JG, Lozupone CA, Lauber C, Clemente JC, Knights D, Knight R, Gordon JI. Human gut microbiome viewed across age and geography. *Nature* 2012; 486: 222–227.
16. Markle JGM, Frank DN, Mortin-Toth S, Robertson CE, Feazel LM, Rolle-Kampczyk U, von Bergen M, McCoy KD, Macpherson AJ, Danska JS. Sex differences in the gut microbiome drive hormone-dependent regulation of autoimmunity. *Science* 2013; 339: 1084–1088.
17. Bogaert D, Keijser B, Huse S, Rossen J, Veenhoven R. Variability and Diversity of Nasopharyngeal Microbiota in Children: A Metagenomic Analysis. *PLoS ONE* 2011; 6: 17035.
18. Biesbroek G, Sanders EAM, Roeselers G, Wang X, Caspers MPM, Trzciński K, Bogaert D, Keijser BJF. Deep Sequencing Analyses of Low Density Microbial Communities: Working at the Boundary of Accurate Microbiota Detection. Gilbert JA, editor. *PLoS ONE* 2012; 7: e32942.
19. Wyllie AL, Chu MLJN, Schellens MHB, van Engelsdorp Gastelaars J, Jansen MD, van der Ende A, Bogaert D, Sanders EAM, Trzciński K. *Streptococcus pneumoniae* in Saliva of Dutch Primary School Children. *PLoS ONE* 2014; 9: e102045.
20. Bosch AATM, de Steenhuijsen Piters WAA, van Houten MA, Chu MLJN, Biesbroek G, Kool J, Pernet P, de Groot P-KCM, Eijkemans MJC, Keijser BJF, Sanders EAM, Bogaert D. Maturation of the Infant Respiratory Microbiota, Environmental Drivers, and Health Consequences. A Prospective Cohort Study. *American Journal of Respiratory and Critical Care Medicine* 2017; 196: 1582–1590.
21. Bosch AATM, Levin E, van Houten MA, Hasrat R, Kalkman G, Biesbroek G, de Steenhuijsen Piters WAA, de Groot PKCM, Pernet P, Keijser BJF, Sanders EAM, Bogaert D. Development of Upper Respiratory Tract Microbiota in Infancy is Affected by Mode of Delivery. *EBioMedicine* 2016; 9: 336–345.

22. Davis NM, Proctor D, Holmes SP, Relman DA, Callahan BJ. Simple statistical identification and removal of contaminant sequences in marker-gene and metagenomics data. *Microbiome* 2018; 6: 226.
23. McMurdie PJ, Holmes S. Phyloseq: An R Package for Reproducible Interactive Analysis and Graphics of Microbiome Census Data. *PLoS ONE* 2013; 8: e61217.
24. Oksanen J, Blanchet FG, Friendly M, Kindt R, Legendre P, McGlinn D, Minchin P, O'Hara R, Simpson G, Solymos P, Stevens M, Szoecs E, Wagner H. *vegan*: Community Ecology Package. 2016.
25. Paulson JN, Stine OC, Bravo HC, Pop M. Differential abundance analysis for microbial marker-gene surveys. *Nature Methods* 2013; 10: 1200–1202.
26. Genuer R, Poggi J, Tuleau-malot C. VSURF : An R Package for Variable Selection Using Random Forests. *The R Journal* 2015; 7: 19–33.
27. Thorsen J, Brejnrod A, Mortensen M, Rasmussen MA, Stokholm J, Al-Soud WA, Sørensen S, Bisgaard H, Waage J. Large-scale benchmarking reveals false discoveries and count transformation sensitivity in 16S rRNA gene amplicon data analysis methods used in microbiome studies. *Microbiome* 2016; 4: 62.
28. Neumann RP, Hilty M, Xu B, Usemann J, Korten I, Mika M, Müller L, Latzin P, Frey U. Nasal microbiota and symptom persistence in acute respiratory tract infections in infants. *ERJ Open Research* 2018; 4: 00066–02018.
29. de Steenhuijsen Piters WAA, Heinonen S, Hasrat R, Bunsow E, Smith B, Suarez-Arrabal M-C, Chaussabel D, Cohen DM, Sanders EAM, Ramilo O, Bogaert D, Mejias A. Nasopharyngeal Microbiota, Host Transcriptome, and Disease Severity in Children with Respiratory Syncytial Virus Infection. *American Journal of Respiratory and Critical Care Medicine* 2016; 194: 1104–1115.
30. Suárez-Arrabal MC, Mella C, Lopez SM, Brown N v., Hall MW, Hammond S, Shiels W, Groner J, Marcon M, Ramilo O, Mejias A. Nasopharyngeal bacterial burden and antibiotics: Influence on inflammatory markers and disease severity in infants with respiratory syncytial virus bronchiolitis. *Journal of Infection* 2015; 71: 458–469.
31. Carroll KN, Wu P, Gebretsadik T, Griffin MR, Dupont WD, Mitchel EF, Hartert T v. The Severity-Dependent Relationship of Infant Bronchiolitis on the Risk and Morbidity of Early Childhood Asthma. *Journal of Allergy and Clinical Immunology* 2009; 123: 1055–1061.
32. Mansbach JM, Hasegawa K, Piedra PA, Avadhanula V, Petrosino JF, Sullivan AF, Espinola JA, Camargo CA. Haemophilus-Dominant Nasopharyngeal Microbiota Is Associated With Delayed Clearance of Respiratory Syncytial Virus in Infants Hospitalized for Bronchiolitis. *The Journal of Infectious Diseases* 2019; 219: 1804–1812.
33. Man WH, Clerc M, de Steenhuijsen Piters WAA, van Houten MA, Chu MLJN, Kool J, Keijser BJB, Sanders EAM, Bogaert D. Loss of Microbial Topography between Oral and Nasopharyngeal Microbiota and Development of Respiratory Infections Early in Life. *American Journal of Respiratory and Critical Care Medicine* 2019; 200(6):760-770.

34. Kim HJ, Jo A, Jeon YJ, An S, Lee K-M, Yoon SS, Choi JY. Nasal commensal *Staphylococcus epidermidis* enhances interferon- λ -dependent immunity against influenza virus. *Microbiome* 2019; 7: 80.
35. Biesbroek G, Tsivtsivadze E, Sanders EAM, Montijn R, Veenhoven RH, Keijser BJJ, Bogaert D. Early Respiratory Microbiota Composition Determines Bacterial Succession Patterns and Respiratory Health in Children. *American Journal of Respiratory and Critical Care Medicine* 2014; 190: 1283–1292.
36. Kaul D, Rathnasinghe R, Ferres M, Tan GS, Barrera A, Pickett B, Methe B, Das S, Budnik I, Halpin R, Wentworth D, Schmolke M, Mena I, Albrecht R, Singh I, Nelson KE, Garcia-Sarstre A, Dupont C, Medina R. Microbiome disturbance and resilience dynamics of the upper respiratory tract in response to influenza A virus infection in analog hosts. *Nature Communications* 2020; 11: 2537.
37. Følsgaard N v., Schjørring S, Chawes BL, Rasmussen MA, Kroghfelt KA, Brix S, Bisgaard H. Pathogenic Bacteria Colonizing the Airways in Asymptomatic Neonates Stimulates Topical Inflammatory Mediator Release. *American Journal of Respiratory and Critical Care Medicine* 2013; 187: 589–595.
38. Thorsen J, Rasmussen MA, Waage J, Mortensen M, Brejnrod A, Bønnelykke K, Chawes BL, Brix S, Sørensen SJ, Stokholm J, Bisgaard H. Infant airway microbiota and topical immune perturbations in the origins of childhood asthma. *Nature Communications* 2019; 10: 5001.
39. Santos-Cortez RLP, Chiong CM, Frank DN, Ryan AF, Giese APJ, Bootpetch Roberts T, Daly KA, Steritz MJ, Szeremeta W, Pedro M, Pine H, Yarza TKL, Scholes MA, Llanes EGD v, Yousaf S, Friedman N, Tantoco MLC, Wine TM, Labra PJ, Benoit J, Ruiz AG, de la Cruz RAR, Greenlee C, Yousaf A, Cardwell J, Nonato RMA, Ray D, Ong KMC, So E, Robertson CE, et al. FUT2 Variants Confer Susceptibility to Familial Otitis Media. *American journal of human genetics* 2018; 103: 679–690.
40. Durack J, Lynch S v., Nariya S, Bhakta NR, Beigelman A, Castro M, Dyer AM, Israel E, Kraft M, Martin RJ, Mauger DT, Rosenberg SR, Sharp-King T, White SR, Woodruff PG, Avila PC, Denlinger LC, Holguin F, Lazarus SC, Lugogo N, Moore WC, Peters SP, Que L, Smith LJ, Sorkness CA, Wechsler ME, Wenzel SE, Boushey HA, Huang YJ. Features of the bronchial bacterial microbiome associated with atopy, asthma, and responsiveness to inhaled corticosteroid treatment. *Journal of Allergy and Clinical Immunology* 2017; 140: 63–75.
41. Singanayagam A, Glanville N, Cuthbertson L, Bartlett NW, Finney LJ, Turek E, Bakhsoliani E, Calderazzo MA, Trujillo-Torralbo M-B, Footitt J, James PL, Fenwick P, Kemp S v, Clarke TB, Wedzicha JA, Edwards MR, Moffatt M, Cookson WO, Mallia P, Johnston SL. Inhaled corticosteroid suppression of cathelicidin drives dysbiosis and bacterial infection in chronic obstructive pulmonary disease. *Science Translational Medicine* 2019; 11: 3879.
42. Gasparrini AJ, Wang B, Sun X, Kennedy EA, Hernandez-Leyva A, Malick Ndao I, Tarr PI, Warner BB, Dantas G. Persistent metagenomic signatures of early-life hospitalization and antibiotic treatment in the infant gut microbiota and resistome. *Nature Microbiology*; 4: 2285–2297.
43. Bokulich NA, Chung J, Battaglia T, Henderson N, Jay M, Li H, D Lieber A, Wu F, Perez-Perez GI, Chen Y, Schweizer W, Zheng X, Contreras M, Dominguez-Bello MG,

Blaser MJ. Antibiotics, birth mode, and diet shape microbiome maturation during early life. *Science translational medicine* 2016; 8: 343ra82.

44. Szabo SM, Gooch KL, Korol EE, Bradt P, Mitchell I, Vo P, Levy AR. A population-based study of childhood respiratory morbidity after severe lower respiratory tract infections in early childhood. *Journal of Pediatrics* 2014; 165: 123–128.

FIGURE LEGENDS

Figure 1 legend

Figure 1: Nasopharyngeal microbiota during LRTI was associated with early recurrence of respiratory symptoms

(A) Alpha diversity measures Chao1 index and Shannon diversity index estimated at time of admission for cases with compared to without recurrence of respiratory symptoms during follow-up. Boxes denote means with 95% confidence intervals. Significance was tested by linear models adjusting for age, gender and month of admission, and is indicated by *:

$p < 0.05$. (B) Nonmetric multidimensional scaling biplot based on Bray-Curtis dissimilarity depicts nasopharyngeal microbiota composition at time of admission for cases with compared to without recurrence of respiratory symptoms during follow-up, combined with the top 10 operational taxonomic units (OTUs) with highest relative abundance in the entire cohort. Ellipses represent the standard deviation of all points within a sub-cohort.

Significance was tested using permutational analysis of variance (PERMANOVA), adjusting for age, gender and month of hospital admission.

Figure 2 legend

Figure 2: Nasopharyngeal microbiota recovery following LRTI

(A) Nonmetric multidimensional scaling biplot based on Bray-Curtis dissimilarity depicts nasopharyngeal microbiota composition for cases at admission, cases at follow-up (recovery), and controls, combined with the top 10 operational taxonomic units (OTUs) with highest relative abundance in the entire cohort. Time (t) in days between admission and the follow-up visit was reported as median [IQR]. Ellipses represent the standard deviation of all points within a sub-cohort. Significance was tested using permutational analysis of variance (PERMANOVA). (B) Mean relative abundances of the 10 OTUs with highest relative abundance.

Figure 3 legend

Figure 3. Microbiota recovery depended on infection phenotype.

Nonmetric multidimensional scaling plots based on Bray-Curtis dissimilarity depict nasopharyngeal microbiota composition for cases at admission, cases at follow-up (recovery), and controls, for each of the 4 phenotypes. Ellipses represent the standard deviation of all points within a sub-cohort. Significance was tested using permutational analysis of variance (PERMANOVA).

Figure 4 legend

Figure 4. Discriminant OTUs between cases recovered from wheezing illness and matched controls.

Volcano plot of differentially abundant OTUs between cases recovered from wheezing illness and controls. Significance was assessed by metagenomeSeq analysis and cross-validated VSURF analysis limited to the top 100 most highly ranked OTUs, and combined results were filtered at a fold change of at least 1.5 or below 0.5. OTUs marked by an asterisk were identified by cross-validated VSURF analysis. Results of data points falling beyond the limits of the plot: *Helcococcus* log₂FC -5.93, adjusted p-value (log₁₀) 13.48; *Janthinobacterium lividum* log₂FC -3.67, adjusted p-value (log₁₀) 10.01.

TABLES

Table 1. Characteristics of cases with and without recurrence of respiratory symptoms during 4-8 weeks follow-up.

	Recurrence	No recurrence	P-value
n	98	51	
Basics			
Age (months)	12.7 [5.5, 21.6]	16.1 [3.5, 32.1]	0.481
Girl	39 (39.8)	21 (41.2)	1.000
Season of sampling			0.679
Spring	13 (13.3)	7 (13.7)	
Summer	20 (20.4)	14 (27.5)	
Autumn	10 (10.2)	3 (5.9)	
Winter	55 (56.1)	27 (52.9)	
Born at term	90 (91.8)	47 (92.2)	1.000
Mode of delivery			0.190
vaginal	76 (77.6)	43 (84.3)	
elective caesarean section	9 (9.2)	6 (11.8)	
emergency caesarean section	13 (13.3)	2 (3.9)	
Lifestyle and Environmental Factors			
Breastfeeding >3 months	38 (38.8)	18 (35.3)	0.812
Day care attendance	65 (66.3)	28 (54.9)	0.235
Tobacco smoke exposure	19 (19.4)	14 (27.5)	0.359
Number of siblings	1.0 [0.2, 2.0]	1.0 [0.0, 2.0]	0.654
Medical History			
Previous LRTI*	29 (29.6)	11 (21.6)	0.393
Previous hospitalization for RTI†	29 (29.6)	8 (15.7)	0.096
Prior wheezing	25 (25.5)	11 (21.6)	0.740
Clinical Data			
Main discharge diagnosis			0.408
bronchiolitis	37 (37.8)	19 (37.3)	
indeterminate	18 (18.4)	8 (15.7)	
pneumonia	18 (18.4)	15 (29.4)	
wheezing	25 (25.5)	9 (17.6)	
Antibiotic treatment during admission	25 (25.5)	14 (27.5)	0.953
Prednison during admission	16 (16.3)	9 (17.6)	1.000
Follow-up time (days after admission)	42.0 [36.0, 49.0]	39.0 [34.5, 44.0]	0.015
Viral detection at admission			
Any virus (%)	94 (98.9)	47 (94.0)	0.232
Respiratory syncytial virus (%)	42 (44.2)	28 (56.0)	0.240
Human rhinovirus (%)	51 (53.7)	21 (42.0)	0.245
Number of viruses (median [IQR])	1.0 [1.0, 2.0]	1.0 [1.0, 2.0]	0.299

Data are n (%) or median [IQR]. Data were acquired from parent questionnaires and medical records. Viral presence was detected by multiplex PCR in nasopharyngeal samples obtained at admission. P-values were calculated by chi-square tests or Wilcoxon rank-sum tests.

* lower respiratory tract infection; † respiratory tract infection.

Table 2: Biomarker species during acute LRTI for subsequent recurrence of respiratory symptoms

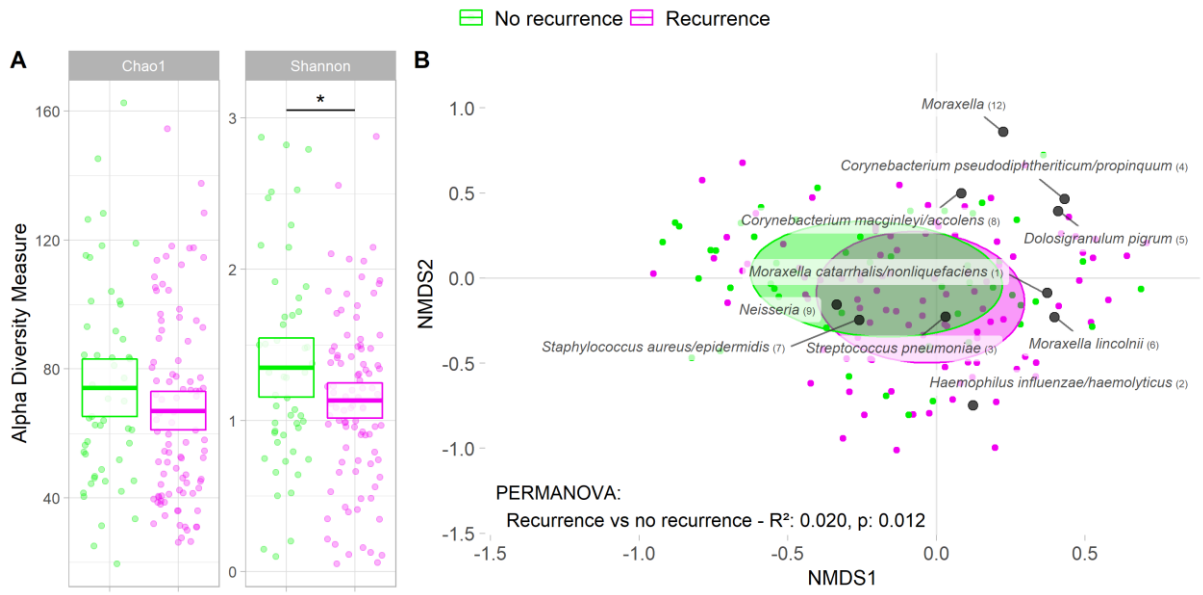
Differentially abundant at admission	OTU*	FC†	Significant in
In cases with subsequent recurrence of respiratory symptoms vs. controls	<i>Haemophilus influenzae/haemolyticus</i> (2)	5.97	ms‡ + V§
	<i>Fusobacterium</i> (83)	2.57	ms
	<i>Prevotella oris</i> (45)	2.31	ms
	<i>Actinomyces graevenitzii</i> (68)	1.88	ms + V
	<i>Fusobacterium</i> (74)	1.76	ms
	<i>Actinomyces johnsonii</i> (75)	1.76	ms + V
	<i>Actinomyces odontolyticus</i> (48)	1.66	ms + V
	<i>Dolosigranulum pigrum</i> (5)	0.41	ms
	<i>Corynebacterium pseudodiphtheriticum/ propinquum</i> (4)	0.41	ms
In cases without subsequent recurrence of respiratory symptoms vs. controls	<i>Neisseria lactamica</i> (19)	2.97	ms + V
	<i>Staphylococcus aureus/epidermidis</i> (7)	2.38	ms + V
	<i>Streptococcus pneumoniae</i> (3)	2.31	V
	<i>Atopobium</i> (100)	1.99	ms
	<i>Klebsiella</i> (11)	1.75	ms + V
	<i>Halomonas</i> (14)	1.57	ms
	<i>Prevotella melaninogenica</i> (16)	1.54	V
	<i>Prevotella nanceiensis</i> (25)	0.49	ms
	<i>Neisseria</i> (9)	0.43	ms + V

* operational taxonomic unit; † fold change; ‡ metagenomeSeq analysis; § VSURF analysis.

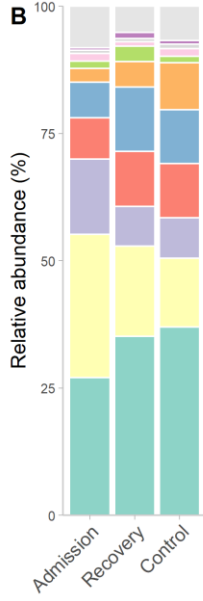
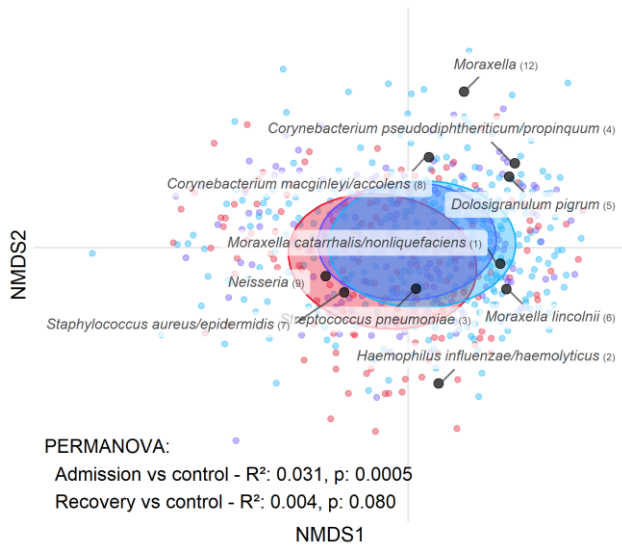
Table 3. Discriminant OTUs for cases during acute LRTI and after 4-8 weeks follow-up compared to controls.

Association	OTU*	Cases at admission vs. controls		Cases at recovery vs. controls		
		FC†	Significant in	FC	Significant in	
Admission	<i>Lactococcus lactis</i> (67)	2.06	ms‡ + V§	ns	ns	
	<i>Corynebacteriaceae</i> (161)	1.83	ms + V	ns	ns	
	<i>Abiotrophia</i> (111)	1.66	ms + V	ns	ns	
	<i>Corynebacterium</i> (62)	1.64	ms	ns	ns	
	<i>Megasphaera</i> (137)	1.62	ms	ns	ns	
	<i>Fusobacterium</i> (74)	1.61	ms	ns	ns	
	<i>Actinomyces</i> (48)	1.56	ms	ns	ns	
	<i>Fusobacterium</i> (83)	1.53	ms	ns	ns	
	<i>Actinomyces graevenitzii</i> (68)	1.52	ms + V	ns	ns	
	<i>Acinetobacter soli</i> (125)	1.51	ms	ns	ns	
	<i>Actinomyces johnsonii</i> (75)	1.51	ms	ns	ns	
	<i>Dolosigranulum pigrum</i> (5)	0.43	ms	ns	ns	
	<i>Dolosigranulum</i> (122)	0.4	ms + V	ns	ns	
	Admission and Recovery	<i>Haemophilus influenzae/haemolyticus</i> (2)	3.85	ms + V	1.69	V
<i>Neisseria lactamica</i> (19)		2.22	ms + V	1.96	ms + V	
<i>Prevotella oris</i> (45)		2.03	ms	1.72	ms + V	
<i>Moraxella</i> (54)		0.32	ms + V	0.45	ms + V	
<i>Moraxella</i> (58)		0.19	ms + V	0.45	ms + V	
<i>Moraxella lincolnii</i> (6)		0.18	ms + V	0.3	ms + V	
<i>Moraxella</i> (84)		0.17	ms + V	0.34	ms	
<i>Moraxella</i> (163)		0.15	ms + V	0.39	ms + V	
<i>Moraxella</i> (112)		0.08	ms	1.68	ms	
<i>Helcococcus</i> (43)		0.07	ms	0.07	ms + V	
Recovery		<i>Neisseriaceae</i> (15)	ns	ns	2.26	ms + V
		<i>Moraxella</i> (12)	ns	ns	1.83	ms
		<i>Porphyromonas</i> (39)	ns	ns	1.62	ms
		<i>Bradyrhizobium</i> (17)	ns	ns	1.54	ms + V
	<i>Janthinobacterium lividum</i> (23)	ns	ns	0.09	ms + V	

* operational taxonomic unit; † fold change; ‡ metagenomeSeq analysis; § VSURF analysis; || not significantly different.



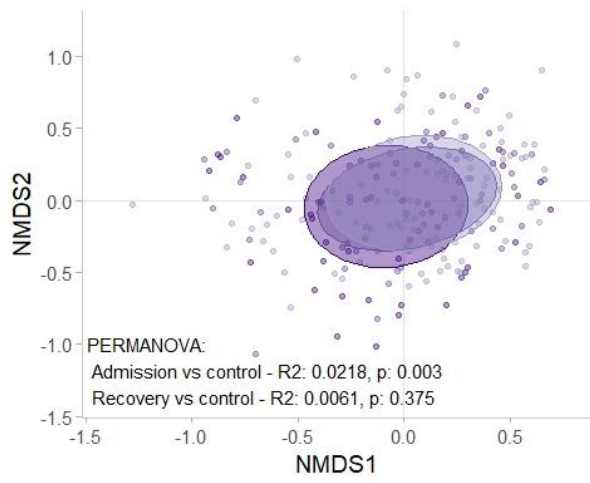
A ■ Cases: Admission (t=0) ■ Cases: Recovery (t=39 [35-46]) ■ Controls



- Other
- Moraxella (12)
- Neisseria (9)
- Corynebacterium macginleyi/accolens (8)
- Staphylococcus aureus/epidermidis (7)
- Moraxella lincolnii (6)
- Dolosigranulum pigrum (5)
- Corynebacterium propinquum (4)
- Streptococcus pneumoniae (3)
- Haemophilus influenzae/haemolyticus (2)
- Moraxella catarrhalis/nonliquefaciens (1)

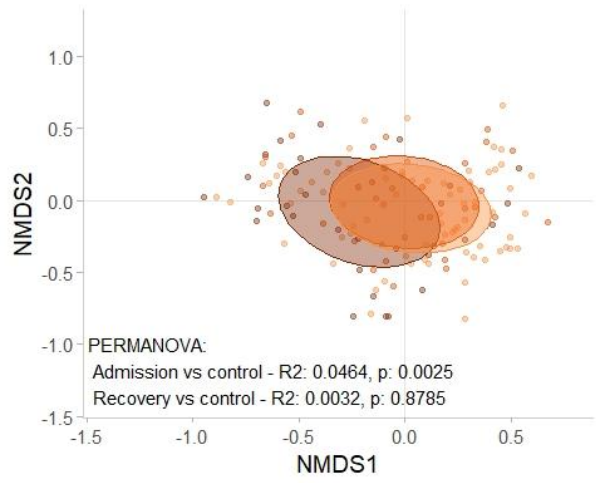
Bronchiolitis (n=57)

● Cases: Admission ● Cases: Recovery ● Controls



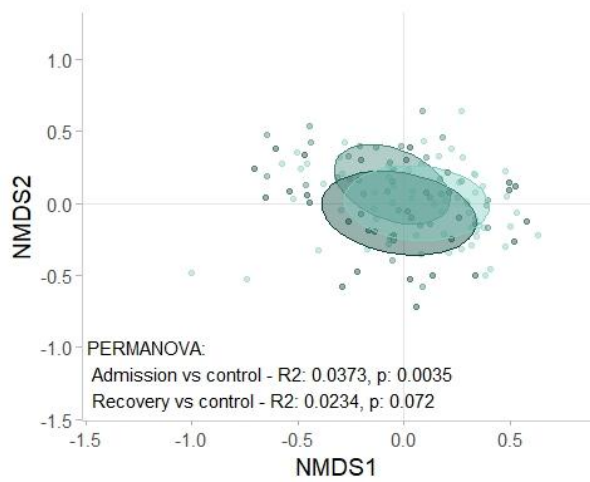
Pneumonia (n=37)

● Cases: Admission ● Cases: Recovery ● Controls



Wheezing illness (n=34)

● Cases: Admission ● Cases: Recovery ● Controls



Mixed infection (n=26)

● Cases: Admission ● Cases: Recovery ● Controls

