



## Early View

Original research article

# Causes and Outcomes of ICU Hospitalizations in Patients with Pulmonary Arterial Hypertension

Mario Naranjo, Valentina Mercurio, Hussein Hassan, Noura Alturaif, Alessandra Cuomo, Umberto Attanasio, Nermin Diab, Sarina K. Sahetya, Monica Mukherjee, Steven Hsu, Aparna Balasubramanian, Catherine E. Simpson, Rachel Damico, Todd M. Kolb, Stephen C. Mathai, Paul M. Hassoun

Please cite this article as: Naranjo M, Mercurio V, Hassan H, *et al.* Causes and Outcomes of ICU Hospitalizations in Patients with Pulmonary Arterial Hypertension. *ERJ Open Res* 2022; in press (<https://doi.org/10.1183/23120541.00002-2022>).

This manuscript has recently been accepted for publication in the *ERJ Open Research*. It is published here in its accepted form prior to copyediting and typesetting by our production team. After these production processes are complete and the authors have approved the resulting proofs, the article will move to the latest issue of the ERJOR online.

Copyright ©The authors 2022. This version is distributed under the terms of the Creative Commons Attribution Non-Commercial Licence 4.0. For commercial reproduction rights and permissions contact [permissions@ersnet.org](mailto:permissions@ersnet.org)

# Causes and Outcomes of ICU Hospitalizations in Patients with Pulmonary Arterial Hypertension

**Authors:** Mario Naranjo<sup>1\*</sup>, Valentina Mercurio<sup>1,2\*</sup>, Hussein Hassan<sup>1</sup>, Noura Alturaif<sup>3</sup>, Alessandra Cuomo<sup>2</sup>, Umberto Attanasio<sup>2</sup>, Nermin Diab<sup>4</sup>, Sarina K. Sahetya<sup>1</sup>, Monica Mukherjee<sup>5</sup>, Steven Hsu<sup>5</sup>, Aparna Balasubramanian<sup>1</sup>, Catherine E. Simpson<sup>1</sup>, Rachel Damico<sup>1</sup>, Todd M. Kolb<sup>1</sup>, Stephen C. Mathai<sup>1</sup>, and Paul M. Hassoun<sup>1</sup>.

<sup>1</sup> Division of Pulmonary and Critical Care Medicine, Department of Medicine, Johns Hopkins University, Baltimore, MD, USA

<sup>2</sup> Department of Translational Medical Sciences, Federico II University, Naples, Italy

<sup>3</sup> Division of Pulmonary and Critical Care Medicine, University of Virginia, Charlottesville, VA, USA

<sup>4</sup> Department of Medicine, Division of Respiriology, University of Toronto, ON, Canada

<sup>5</sup> Division of Cardiology, Department of Medicine, Johns Hopkins University, Baltimore, MD, USA

\*Co-first authors

## Correspondence to:

Paul M. Hassoun

Division of Pulmonary and Critical Care Medicine

1830 East Monument Street

Baltimore, MD 21287

Telephone: 410-614-5158

Fax: 410-614-7451

Email: [phassoun@jhmi.edu](mailto:phassoun@jhmi.edu)

### **Take home message**

PAH continues to have limited survival despite improvements in therapy. ICU and one-year mortality risk factors include hyponatremia, elevated proBNP, hyperbilirubinemia, and need for vasopressors/inotropes and mechanical ventilation.

## **Abstract**

**Rationale:** Pulmonary arterial hypertension (PAH) is a rare disease characterized by limited survival despite remarkable improvements in therapy. The causes, clinical burden, and outcomes of patients admitted to the intensive care unit (ICU) remain poorly characterized.

**Objectives:** To describe patient characteristics, causes of ICU hospitalization, and risk factors for ICU and one-year mortality.

**Methods:** Data from patients enrolled in the Johns Hopkins Pulmonary Hypertension Registry were analyzed for the period between January 2010 to December 2020. Clinical, functional, hemodynamic, and laboratory data were collected.

**Measurements and Main Results:** 102 adult patients with 155 consecutive ICU hospitalizations were included. The leading causes for admission were right heart failure (RHF, 53.3%), infection (17.4%), and arrhythmia (11.0%). ICU mortality was 27.1%. Mortality risk factors included Na < 136 mEq/mL (OR: 3.10, 95% CI: 1.41 – 6.82), elevated proBNP (OR: 1.75, 95% CI: 1.03 – 2.98), hyperbilirubinemia (OR: 1.40, 95% CI: 1.09 – 1.80), hyperlactemia (OR: 1.42, 95% CI: 1.05 – 1.93), and need for vasopressors/inotropes (OR: 5.29, 95% CI: 2.28 – 12.28), mechanical ventilation (OR: 3.76, 95% CI: 1.63 – 8.76), and renal replacement therapy (OR: 5.57, 95% CI: 1.25 – 24.76). Mortality rates at 3, 6 and 12 months were 17.5%, 27.6%, and 39.0%, respectively. Connective tissue disease-associated

PAH has lower 1-year survival compared to idiopathic PAH (51.4% vs. 79.8%, log-rank test  $p=0.019$ ).

**Conclusions:** RHF is the most common cause for ICU admission. In-hospital and one-year mortality remain exceedingly high despite improved ICU care. Recognizing specific risk factors on admission can help identifying patients at risk for poor outcomes.

**Abstract word count: 250**

**Keywords:** Pulmonary arterial hypertension, hospitalization, intensive care unit, mortality, right heart failure.

## **Introduction**

Pulmonary arterial hypertension (PAH) remains a disease with significant morbidity and mortality despite a plethora of modern medications which have improved general outcomes [1-3]. It is a complex disorder of the pulmonary vasculature leading to progressive adaptive and maladaptive morphological and functional changes of the right ventricle (RV), with RV failure being the single most important determinant of survival [4, 5].

The clinical course of PAH is characterized, in part, by a high risk of hospitalization. Data from recent large multicenter trials and observational studies have identified right heart failure (RHF) as the primary cause of hospital admission and mortality in PAH patients [6-10].

However, patient characteristics and co-morbidities, causes of admission, and mortality risk factors of patients admitted to the intensive care unit (ICU) remain poorly defined, perhaps explaining the limited number of targeted clinical trials and therapeutic recommendations or guidelines from scientific societies for the management of critically ill PAH patients [11, 12].

The aims of this study were to analyze the causes, clinical characteristics, outcomes, and mortality risk factors of PAH patients needing admission to the medical ICU, and to assess the 3, 6, and 12 month mortality rates and associated risk factors upon hospital discharge.

## **Patients and Methods**

### ***Patient Population***

From January 2010 to December 2020, data of adult PAH patients enrolled in the Johns Hopkins Pulmonary Hypertension Registry and hospitalized at the Johns Hopkins Hospital

Medical ICU, were collected. The diagnosis of PAH, group 1 pulmonary hypertension (PH), was confirmed by a mean pulmonary artery pressure (mPAP) greater than 20 mmHg at rest, a pulmonary capillary wedge pressure (PCWP)  $\leq$  15 mmHg, and a pulmonary vascular resistance (PVR)  $\geq$  3 Wood units [13]. Within group 1 PH, we limited our analysis to idiopathic PAH (IPAH), PAH due to connective tissue diseases (CTD-PAH), congenital heart diseases-PAH (CHD-PAH), portopulmonary hypertension-PAH (PoPH-PAH), and HIV-associated PAH (HIV-PAH). Other causes of group 1 PH were excluded due to a low number of subjects. This study was approved by the Johns Hopkins University Institutional Review Board.

Demographic data, including medical history, PAH characteristics at diagnosis, and ICU admission and discharge information, were retrieved from electronic records. Charlson comorbidity index was calculated from the medical history [14]. Anemia was defined as hemoglobin  $<$  13 g/dL for males and  $<$  12 g/dL for females [15]. Hyponatremia was defined as a Na serum concentration  $\leq$  136 mEq/L [6]. Estimated glomerular filtration rate (eGFR) was calculated using the Modified Diet in Renal Disease equation [16]. RHF was defined by symptoms and physical evidence of volume overload [17, 18].

Risk factors for in-hospital ICU mortality included demographics, underlying PAH diagnosis, World Health Organization functional class (WHO FC) at the latest outpatient assessment, physical signs and laboratory parameters on ICU admission, and ever need for vasopressors/inotropes, mechanical ventilation, and renal replacement therapy during the ICU stay. These variables were selected based on prior studies that have addressed mortality related to hospital and ICU admissions in PAH patients [1, 6, 12, 19-21]. Among

survivors, mortality at 3, 6, and 12 months was analyzed from the index hospitalization. Risk factors for mortality after discharge included similar variables. The latest clinic visit or contact with the patient was considered as censoring time for living patients. Death after discharge was determined from hospital records up to December 31, 2020.

### ***Statistical Methods***

Group comparisons were made using the Chi-squared and Fisher exact tests as appropriate for categorical variables and ANOVA test for continuous variables. Patients were grouped as IPAH, CTD-PAH, and other-PAH (including CHD-PAH, PoPH-PAH, and HIV-PAH) for optimal statistical analysis and result presentation. Correlation analyses were performed to identify significant variables to be considered for regression analysis. The identification of prognostic factors for ICU mortality was performed using logistic regression with robust adjustment of the variance for repeated measurements to handle patients with multiple hospitalizations. Risk factors were adjusted for age and underlying PAH diagnosis in a multivariable model. Mortality after ICU discharge was assessed using the Kaplan–Meier method. Comparisons between groups were performed by log-rank test. Risk factors for mortality at 1-year were assessed via Cox proportional hazards models. Computations were completed using the Stata statistical software (version 16.1; Stata, College Station, TX, USA). A p-value <0.05 was considered statistically significant.



## Results

### *Patient characteristics*

From January 2010 to December 2020, 102 PAH patients were admitted to the Johns Hopkins Hospital Medical ICU. The general characteristics of the patient population are presented in **Table 1**. Twenty-nine patients had IPAH, 57 patients CTD-PAH, and 16 patients had other-PAH (CHD-PAH (3), PoPH-PAH (6), and HIV-PAH (7)). Compared to IPAH, patients with CTD-PAH were older ( $63.5 \pm 11.9$  vs.  $53.7 \pm 13.5$  years;  $p < 0.001$ ), had a lower proportion of females (89.5% vs. 93.1%;  $p < 0.001$ ), included a higher proportion of White (63.1% vs. 55.2%;  $p = 0.05$ ) and a lower proportion of African American (35.1% vs. 41.4%;  $p = 0.05$ ), presented with a higher Charlson comorbidity index  $\geq 3$ , (77.2% vs. 37.9%;  $p < 0.001$ ), and were more likely to have a history of cerebrovascular disease, peripheral vascular disease, and depression.

WHO FC, assessed during the last clinical encounter before admission, showed an overall high proportion of patients with functional limitation (WHO FC II: 23.5%, III: 57.9%, IV: 18.6%).

Hemodynamic data obtained at the time of PAH diagnosis indicated severe PAH across all groups, with a right atrial pressure (RAP) of  $11 \pm 6$  mmHg, mPAP of  $45 \pm 14$  mmHg, cardiac output (CO) of  $4.7 \pm 1.9$  L/min, cardiac index (CI)  $2.19 \pm 0.64$  L/min/m<sup>2</sup>, and PVR of 7.7 Wood units (IQR: 4.8 – 11.8). Patients with CTD-PAH had significantly lower mPAP compared with IPAH and other-PAH patients (39 vs. 54 vs. 50 mmHg;  $p < 0.001$ ), as well as a lower PVR (6.7

vs. 10.0 vs. 9.4 Wood units;  $p=0.008$ ). Other hemodynamic parameters such as CO, CI or RAP were similar between groups. The median time from PAH diagnosis to first ICU admission was 38.9 months (IQR: 12.4 - 92.3) and was significantly lower in CTD-PAH compared to IPAH patients (39.5 vs. 64.5 months;  $p=0.002$ ).

### ***Characteristics of ICU hospitalizations***

A total of 155 ICU hospitalizations in 102 patients were identified. The characteristics of the patients and hospitalizations, and differences between groups, are shown in **Table 2**. The underlying diagnoses were IPAH (45 hospitalizations), CTD-PAH (85 hospitalizations), and other-PAH (25 hospitalizations, including CHD-PAH (3), PoPH-PAH (11), and HIV-PAH (11)). The most common causes for ICU admission were RHF (83; 53.5%), infection (27; 17.4%), arrhythmia (17; 11.0%), syncope (13; 8.4%), and bleeding disorders (8; 5.2%). Among infections, those related to pneumonia were the most frequent (15; 55.6%), followed by skin and soft tissue infections (6; 22.2%), urinary tract infections (4; 14.8%), and central line bloodstream infections (2; 7.4%).

Upon admission, systolic blood pressure (SBP), diastolic blood pressure (DBP), heart rate, blood urea nitrogen (BUN), lactate, hemoglobin, and pro-B-type natriuretic peptide (pro-BNP) were not significantly different across groups. In contrast, creatinine was higher among other-PAH patients compared to IPAH and CTD-PAH (2.6 vs. 1.8 vs. 1.5 mg/dL;  $p=0.006$ ). CTD-PAH patients had worse renal function overall based on eGFR less than 60 ml/min/1.73 m<sup>2</sup> ( $p=0.009$ ). IPAH presented the lowest proportion of patients with serum sodium concentrations < 136 mEq/mL (17; 37.8%). Patients with other-PAH had the highest mean

levels of total bilirubin ( $2.5 \text{ mg/dL} \pm 2.0$ ;  $p < 0.001$ ). During their ICU stay, 75 patients (48.4%) received vasopressors or inotropes, 32 (20.1%) received mechanical ventilation, and 9 (5.8%) received renal replacement therapy. Among patients who received vasopressors or inotropes, norepinephrine was the most common vasopressor (55.8%), followed by dopamine (31.2%), with the latter including patients who only received low-dose dopamine to assist diuresis. Vasopressin was used in 21 patients (27.3%) and dobutamine in 12 patients (15.7%), usually as adjunct therapies to norepinephrine.

Regarding therapy, 91 (89.2%) patients were already receiving PAH-specific therapy. The most commonly used medications included phosphodiesterase-5 inhibitors (PDE5-i) (78), followed by endothelin receptor antagonists (53) and prostanoids (35). Patients not receiving targeted therapy, included patients with a recent PAH diagnosis and who required immediate hospital admission.

The median length of ICU stay for all groups was 5 days (IQR: 2 - 9). Overall, ICU mortality was 27.1% (42 patients), and 42.7% and 50% among patients who required vasopressor/inotropes or mechanical ventilation, respectively. The in-hospital mortality was 31.3% for patients admitted for RHF, and 22.2% for those admitted due to infection.

### ***Risk factors for in-hospital mortality during ICU hospitalizations***

Significant risk factors for in-hospital mortality are shown in **Table 3**. Several variables were shown by univariable logistic regression models to be potential risk factors. After adjusting for age and underlying PAH diagnosis, risk factors were  $\text{Na} < 136 \text{ mEq/mL}$  (OR 3.10;  $p = 0.005$ ),

elevated pro-BNP (OR 1.75; p=0.03), hyperbilirubinemia (OR 1.40; p=0.009), hyperlactemia (OR 1.42; p=0.023), use of vasopressors or inotropes (OR 5.29; p<0.001), mechanical ventilation (OR 3.76; p=0.002), and renal replacement therapy (OR 5.57; p=0.024). Although eGFR <60 ml/min/1.73 m<sup>2</sup> was not statistically significant in the multivariable logistic regression model, its unadjusted significance is noteworthy (OR 5.27; p=0.04).

### ***Outcomes after ICU discharge***

Among 77 patients who survived their first ICU admission, 2 patients underwent a lung transplant. Thus, outcomes were assessed in 75 patients. At the time of discharge from the ICU, 66 of these patients were on PAH-specific treatment, including 25 patients on monotherapy, 28 on dual therapy, and 13 on triple therapy. Patients who were not started on targeted therapy, or therapy was not escalated, by the time they left the ICU, were kept clinically and hemodynamically optimized before hospital discharge while awaiting initiation, or escalation, of PAH targeted therapy or pending insurance approval. Furthermore, the monotherapy cohort included patients with a long history of the disease who had remained stable on their respective regimen up until admission. The late mortality rates among hospital survivors at 3, 6 and 12 months were 17.5%, 27.6%, and 39.0%, respectively (**Figure 1**). When 1-year survival was compared across the three PAH groups, IPAH survival was 79.8% vs. CTD-PAH 51.4% vs. Other-PAH 59.7% (log-rank test p=0.06). Furthermore, the difference in survival was statically significant when comparing the two largest groups, IPAH vs. CTD-PAH (log-rank test p=0.019) (**Figure 2**).

### ***Risk factors for 1-year mortality***

Univariable and multivariable Cox proportional hazards models for one-year mortality are presented in **Table 4**. Several variables were identified by univariable Cox models to be potential risk factors. After adjusting for age and underlying PAH diagnosis, risk factors were Na <136 mEq/mL (HR 1.71; p=0.021), elevated pro-BNP (HR 1.35; p=0.04), hyperbilirubinemia (HR 1.19; p=0.006), and use of vasopressors or inotropes (HR 2.57; p<0.001) and mechanical ventilation (HR 2.06; p=0.005). After adjusting for age, CTD-PAH patients had a higher risk of death compared to IPAH patients (HR 1.89; p=0.05).

### **Discussion**

This study identified specific features related to PAH patients requiring ICU admission. First, RHF continues to be the single most common reason for hospitalization to an ICU setting. Second, common risk factors for ICU and one-year mortality after discharge include hyponatremia, elevated pro-BNP, hyperbilirubinemia, and need for vasopressors or inotropes and mechanical ventilation. Third, among all PAH subgroups, CTD-PAH is associated with worse outcomes and survival. Finally, in-hospital and one-year mortality remain exceedingly high despite a general improvement in clinical management and targeted therapeutics for PAH.

The Johns Hopkins Hospital Medical ICU is a closed unit with standardized protocols designed to provide optimal evidence-based patient care, particularly related to the use of intravenous diuretics, vasopressors or inotropes, mechanical ventilation, and renal

replacement therapy as clinically indicated [11, 22, 23]. The Johns Hopkins PH specialists are directly involved in the care of PAH patients admitted to the ICU to provide multidisciplinary management along with the ICU providers. Therefore, the goal of this study was to explore the clinical characteristics, causes of ICU admission, general practices and determinants of survival, and to assess improvement in care and survival, if any, compared to our experience from a decade ago [6] and other recent studies.

In 2010, Sztrymf and colleagues reported findings in a PAH population of 46 patients admitted to an ICU setting. Mortality was 41%, however, no significant differences were found between survivors and non-survivors across demographics, clinical features, and hemodynamic data collected on admission. SBP, pro-BNP, C-reactive protein, Na, and creatinine correlated significantly with survival [21]. In contrast, Campo et al. and Haddad et al. described statistically significant differences across PAH groups regarding demographics, outcomes and survival of patients admitted to the hospital due to RHF, however, only 25% and 17% of these admissions required ICU care, for each study respectively [6, 12]. More recently, Ambroz et al. reported predictors of survival in 70 PH patients (59 PAH and 11 chronic thromboembolic pulmonary hypertension (CTEPH)) admitted with RHF. Their cohort included 96 admissions to cardiology wards and 21 to the ICU, with overall hospital and ICU mortality rates of 12.8% and 52.4%, respectively. Hyponatremia, younger age, CTD-PAH and need for PAH combination therapy were described as in-hospital mortality risk factors [24]. Moreover, Bauchmuller and colleagues recently published a retrospective observational study based on the ASPIRE registry. They included 242 critical care PH admissions involving 206 patients (162 PAH admissions, including 96 IPAH and 40 CTD-PAH). Hospital survival

was 59.3%, 94% and 92% for patients admitted for medical, surgical, or obstetric reasons, respectively. Higher APACHE II (Acute Physiology and Chronic Health Evaluation) score, age, and lactate, and lower oxygen saturation, platelet count and sodium levels were identified as independent predictors of hospital mortality [25], similar to risk factors described in our study.

Observational studies and registry data have demonstrated RHF to be the leading cause of hospitalization in PAH patients, which is associated with a shorter time to clinical worsening after discharge, including PAH-related readmissions, deterioration in FC or decrease in 6-minute walk test distance by 20% from baseline, need for interventional procedures (i.e., lung transplantation, atrial septostomy); and increased mortality rates [6, 19, 21, 24, 26].

Respiratory failure frequently complicates the hospitalization course with hypoxia, acidosis, and hypercapnia contributing to worsening pulmonary vasoconstriction and increased RV afterload [27]. The latter is also increased by the effect of positive pressure from mechanical ventilation. [28]. In this study, significant predictors of poor outcomes included the use of vasopressors or inotropes and mechanical ventilation. In particular, we observed that 42.7% of patients treated with either vasopressors or inotropes, and 50% of patients who needed mechanical ventilation died during their hospitalization, compared to 45.7% and 100% as we previously reported, respectively [6]. This improvement of outcomes in PAH patients receiving mechanical ventilation may derive from recent advances in evidence-based practices focused on addressing pathophysiological pathways with emphasis on low tidal volume ventilation [29], appropriate sedation, early mobilization [30], and the implementation of ICU care bundles [31]. Furthermore, a multidisciplinary team-based approach between

PAH providers and cardiac anesthesia at our institution [32], may have contributed to the education and awareness among ICU and anesthesia providers regarding the specific challenges surrounding induction and intubation, and other invasive procedures in the ICU.

Several metabolic and electrolyte derangements were identified as ICU mortality risk factors. Aside from hyponatremia, elevated proBNP, hyperbilirubinemia, and hyperlactemia; the need for renal replacement therapy was a strong risk factor for ICU adverse outcomes. Renal dysfunction has been associated with abnormal cardiopulmonary hemodynamics, increased in-hospital mortality, and poor survival in PAH patients enrolled in the Registry to Evaluate Early and Long-term PAH Disease Management (REVEAL). Participants with a  $\geq 10\%$  decline in eGFR from baseline over  $\geq 1$  year had a significantly increased risk of death (HR 1.66;  $p < 0.0001$ ) and the composite of all-cause hospitalization and death (HR 1.33;  $p = 0.002$ ) [33]. In the present study, renal dysfunction, defined as eGFR  $< 60$  ml/min/1.73 m<sup>2</sup> at the time of ICU admission, was a significant risk factor for ICU mortality (OR 5.3;  $p=0.04$ ) and highlights the significance of the cardiorenal axis. The primary mechanism through which PH leads to renal dysfunction is due to increased central venous pressure (CVP) and consequent renovascular congestion, mediated by RV dysfunction [34]. This results in decreased effective renal perfusion due to reduced trans-glomerular pressure gradients. Furthermore, a cascade of myogenic and neural reflexes, baroreceptor stimulation, activation of the renin-angiotensin-aldosterone system (RAAS), and pro-inflammatory pathways lead to a rapid decline in the glomerular filtration rate. The activation of the RAAS and production of angiotensin-II has been shown to activate NADPH oxidase, leading presumably to progressive oxidative kidney injury [35]. In this context, as renal function declines and diuretics become ineffective, renal



replacement therapy is the only available option for fluid removal. Hence, we found that patients requiring renal replacement therapy had a poor prognosis and increased mortality (OR 5.6;  $p=0.024$ ).

Overall in-hospital mortality in PAH patients who required ICU care was lower in this study compared with previous reports (27.1% vs. 38% [12] vs. 41% [21]). It is noteworthy that admission for RHF portends a worse prognosis (31.3% present study vs. 48% [6] vs. 52.4% [24] ICU mortality) relative to left heart failure (LHF) (4% - 17%) [20, 36, 37]. Compared with patients with LHF, patients with PAH are younger, are more often women, and have a higher prevalence of connective tissue disease. Comorbid conditions, such as systemic hypertension, diabetes mellitus, or peripheral vascular disease, are also less common. Despite high in-hospital mortality rates, we noted a remarkable improvement compared to our previous experience between 2000 to 2009. The cohort then included 61 patients with 115 hospitalizations, including 25.2% ICU admissions [6]. Of the latter group, 48.3% of patients admitted with RHF died compared to 31.3% patients in the present study. Within the largest subgroups of this population, IPAH (45 hospitalizations) and CTD-PAH (85 hospitalizations), in-hospital mortality was 22.2% and 25.9%, respectively, which is considerably lower compared to rates from the prior epoch (30% and 57.9%, respectively) [6]. This important trend in outcomes could be the reflection of a better understanding of the disease and improved overall care.

Scleroderma associated PAH (SSc-PAH) was the most common cause of PAH in our cohort due to referral bias, and the second most commonly identified PAH etiology in most PH

registries. It is the leading cause of death in SSc [5, 38, 39]. Dual upfront combination therapy has certainly been a significant therapeutic advance in this disease and offers new hopes for this population [7, 40]. The current CTD-PAH cohort included 46 (81%) SSc-PAH patients, who were older and had a higher prevalence of comorbidities compared to other groups, which is similar to prior observations [41]. Most patients had a Charlson comorbidity index  $\geq 2$  (89.5%), suggesting that the presence of numerous comorbidities carries a higher in-hospital mortality risk, although this association was not statistically significant. After discharge, CTD-PAH patients had the worst one-year survival (48.6% mortality), followed by other-PAH (40.3%) and IPAH (20.2%). Similar risk factors predicted 1-year mortality, including hyponatremia, elevated proBNP, and hyperbilirubinemia, as well as the need for vasopressors or inotropes and mechanical ventilation during the initial ICU admission. Carrying a diagnosis of CTD-PAH compared to IPAH is by itself a strong mortality risk factor. This difference in outcomes in CTD-PAH patients can be attributed to a complex interaction between older age, higher prevalence of comorbidities, and more refractory PAH [41-43]. In addition, we have previously identified profound sarcomere dysfunction (i.e., depressed RV contractility and contractile reserve) in SSc-PAH compared to IPAH [44], which could potentially be a major contributory factor to RHF, and hence worse clinical outcomes.

Some limitations of this study must be noted. First, we analyzed the predictive value of clinical and laboratory parameters on admission, but not the effect of their changes during the ICU stay. Second, given that we only included patients cared for at a single center, and considering the high proportion of patients with CTD-PAH, our findings cannot be generalized to other centers where PAH subgroups may differ.

## **Conclusion**

In summary, in-hospital mortality for PAH patients remains unacceptably high, and when patients need advanced care in the ICU, outcomes can be devastating. This trend is carried over after discharge, and despite a plethora of new therapeutics, short-term survival remains dismal. These findings are especially concerning for CTD-PAH patients, suggesting that the need for ICU hospitalization itself portends a poor prognosis. Common risk factors for ICU and one-year mortality include hyponatremia, elevated proBNP, and total bilirubin, and the need for vasopressors/inotropes and mechanical ventilation. Abnormal renal function or need for renal replacement also convey a poor prognosis. Improvements in long-term outcomes of stable PAH patients are now reflected in a considerable, but still far from acceptable, decrease of in-hospital and post-discharge mortality rates. Strategies aimed at identifying patients at higher risk early in the hospitalization course should help guide management and optimize treatment.

## **Acknowledgments**

None

## **Contributions**

M. Naranjo, V. Mercurio, H. Hassan, S.K. Sahetya, M. Mukherjee, S. Hsu, A.

Balasubramanian, C.E. Simpson, R.L. Damico, T.M. Kolb, S.C. Mathai, and P.M. Hassoun were involved in conceptual design, data acquisition, analysis, interpretation, and manuscript preparation. N. Alturaif, A. Cuomo, U. Attanasio, and N. Diab were involved in data

acquisition, analysis, and interpretation. All authors listed have been involved in revising the manuscript for important intellectual content, approved the final version submitted for publication, and are in agreement with the accuracy and integrity of the submitted work.

**Conflict of interest:** M. Naranjo has nothing to disclose. V. Mercurio has nothing to disclose. H. Hassan has nothing to disclose. N. Alturaif has nothing to disclose. A. Cuomo has nothing to disclose. U. Attanasio has nothing to disclose. N. Diab has nothing to disclose. S.K. Sahetya has nothing to disclose. M. Mukherjee has nothing to disclose. S. Hsu has nothing to disclose. A. Balasubramanian has nothing to disclose. C.E. Simpson has nothing to disclose. R.L. Damico has nothing to disclose. T.M. Kolb has nothing to disclose. S.C. Mathai has received consulting fees from Actelion, Bayer, Acceleron, and United Therapeutics. P.M. Hassoun served on a scientific advisory board for Merck & Co.

### **Sources of support**

Supported by funding from the National Institutes of Health National Heart, Lung and Blood Institute grants HL114910 (P.M.H.) and T32HL007534 (M.N.). The content is solely the responsibility of the authors and does not necessarily represent the official views of the National Institutes of Health.

## References

1. Galie N, Channick RN, Frantz RP, Grunig E, Jing ZC, Moiseeva O, Preston IR, Pulido T, Safdar Z, Tamura Y, et al. Risk stratification and medical therapy of pulmonary arterial hypertension. *Eur Respir J.* 2019;53(1).
2. Galie N, Humbert M, Vachiery JL, Gibbs S, Lang I, Torbicki A, Simonneau G, Peacock A, Vonk Noordegraaf A, Beghetti M, et al. 2015 ESC/ERS Guidelines for the diagnosis and treatment of pulmonary hypertension: The Joint Task Force for the Diagnosis and Treatment of Pulmonary Hypertension of the European Society of Cardiology (ESC) and the European Respiratory Society (ERS): Endorsed by: Association for European Paediatric and Congenital Cardiology (AEPC), International Society for Heart and Lung Transplantation (ISHLT). *Eur Respir J.* 2015;46(4):903-75.
3. Mercurio V, Bianco A, Campi G, Cuomo A, Diab N, Mancini A, Parrella P, Petretta M, Hassoun PM, Bonaduce D. New Drugs, Therapeutic Strategies, and Future Direction for the Treatment of Pulmonary Arterial Hypertension. *Curr Med Chem.* 2019;26(16):2844-64.
4. Hassoun PM. The right ventricle in scleroderma (2013 Grover Conference Series). *Pulm Circ.* 2015;5(1):3-14.
5. Naranjo M, Hassoun PM. Systemic Sclerosis-Associated Pulmonary Hypertension: Spectrum and Impact. *Diagnostics (Basel).* 2021;11(5).
6. Campo A, Mathai SC, Le Pavec J, Zaiman AL, Hummers LK, Boyce D, Houston T, Lechtzin N, Chami H, Girgis RE, et al. Outcomes of hospitalisation for right heart failure in pulmonary arterial hypertension. *Eur Respir J.* 2011;38(2):359-67.

7. Galie N, Barbera JA, Frost AE, Ghofrani HA, Hoeper MM, McLaughlin VV, Peacock AJ, Simonneau G, Vachiery JL, Grunig E, et al. Initial Use of Ambrisentan plus Tadalafil in Pulmonary Arterial Hypertension. *N Engl J Med*. 2015;373(9):834-44.
8. Jansa P, Pulido T. Macitentan in Pulmonary Arterial Hypertension: A Focus on Combination Therapy in the SERAPHIN Trial. *Am J Cardiovasc Drugs*. 2018;18(1):1-11.
9. Sitbon O, Channick R, Chin KM, Frey A, Gaine S, Galie N, Ghofrani HA, Hoeper MM, Lang IM, Preiss R, et al. Selexipag for the Treatment of Pulmonary Arterial Hypertension. *N Engl J Med*. 2015;373(26):2522-33.
10. Vachiery JL, Galie N, Barbera JA, Frost AE, Ghofrani HA, Hoeper MM, McLaughlin VV, Peacock AJ, Simonneau G, Blair C, et al. Initial combination therapy with ambrisentan+tadalafil on pulmonary arterial hypertension-related hospitalization in the AMBITION trial. *J Heart Lung Transplant*. 2019;38(2):194-202.
11. Konstam MA, Kiernan MS, Bernstein D, Bozkurt B, Jacob M, Kapur NK, Kociol RD, Lewis EF, Mehra MR, Pagani FD, et al. Evaluation and Management of Right-Sided Heart Failure: A Scientific Statement From the American Heart Association. *Circulation*. 2018;137(20):e578-e622.
12. Haddad F, Peterson T, Fuh E, Kudelko KT, de Jesus Perez V, Skhiri M, Vagelos R, Schnittger I, Denault AY, Rosenthal DN, et al. Characteristics and outcome after hospitalization for acute right heart failure in patients with pulmonary arterial hypertension. *Circ Heart Fail*. 2011;4(6):692-9.
13. Simonneau G, Montani D, Celermajer DS, Denton CP, Gatzoulis MA, Krowka M, Williams PG, Souza R. Haemodynamic definitions and updated clinical classification of pulmonary hypertension. *Eur Respir J*. 2019;53(1).

14. Charlson ME, Pompei P, Ales KL, MacKenzie CR. A new method of classifying prognostic comorbidity in longitudinal studies: development and validation. *J Chronic Dis.* 1987;40(5):373-83.
15. Le CH. The Prevalence of Anemia and Moderate-Severe Anemia in the US Population (NHANES 2003-2012). *PLoS One.* 2016;11(11):e0166635.
16. Levey AS, Stevens LA, Schmid CH, Zhang YL, Castro AF, 3rd, Feldman HI, Kusek JW, Eggers P, Van Lente F, Greene T, et al. A new equation to estimate glomerular filtration rate. *Ann Intern Med.* 2009;150(9):604-12.
17. Rich JD, Rich S. Clinical diagnosis of pulmonary hypertension. *Circulation.* 2014;130(20):1820-30.
18. Runo JR, Loyd JE. Primary pulmonary hypertension. *Lancet.* 2003;361(9368):1533-44.
19. Burger CD, Long PK, Shah MR, McGoon MD, Miller DP, Romero AJ, Benton WW, Safford RE. Characterization of first-time hospitalizations in patients with newly diagnosed pulmonary arterial hypertension in the REVEAL registry. *Chest.* 2014;146(5):1263-73.
20. Chioncel O, Ambrosy AP, Filipescu D, Bubenek S, Vinereanu D, Petris A, Collins SP, Macarie C, Gheorghide M, Romanian Acute Heart Failure Syndromes Study I. Patterns of intensive care unit admissions in patients hospitalized for heart failure: insights from the RO-AHFS registry. *J Cardiovasc Med (Hagerstown).* 2015;16(5):331-40.
21. Sztrymf B, Souza R, Bertoletti L, Jais X, Sitbon O, Price LC, Simonneau G, Humbert M. Prognostic factors of acute heart failure in patients with pulmonary arterial hypertension. *Eur Respir J.* 2010;35(6):1286-93.

22. Yancy CW, Jessup M, Bozkurt B, Butler J, Casey DE, Jr., Colvin MM, Drazner MH, Filippatos GS, Fonarow GC, Givertz MM, et al. 2017 ACC/AHA/HFSA Focused Update of the 2013 ACCF/AHA Guideline for the Management of Heart Failure: A Report of the American College of Cardiology/American Heart Association Task Force on Clinical Practice Guidelines and the Heart Failure Society of America. *Circulation*. 2017;136(6):e137-e61.
23. Medicine JH. Hopkins Policy and Document Library 2021 [Available from: <https://hpo.johnshopkins.edu/hopkins/?event=public.view>].
24. Ambroz D, Jansa P, Kuchar J, Belohlavek J, Aschermann M, Dytrych V, Lindner J, Simkova I, Linhart A. Predictors of survival in patients with pulmonary hypertension and acute right heart failure. *Bratisl Lek Listy*. 2020;121(3):230-5.
25. Bauchmuller K, Condliffe R, Southern J, Billings C, Charalampopoulos A, Elliot CA, Hameed A, Kiely DG, Sabroe I, Thompson AAR, et al. Critical care outcomes in patients with pre-existing pulmonary hypertension: insights from the ASPIRE registry. *ERJ Open Res*. 2021;7(2).
26. Preston IR, Suissa S, Humbert M. New perspectives in long-term outcomes in clinical trials of pulmonary arterial hypertension. *Eur Respir Rev*. 2013;22(130):495-502.
27. Price LC, Wort SJ, Finney SJ, Marino PS, Brett SJ. Pulmonary vascular and right ventricular dysfunction in adult critical care: current and emerging options for management: a systematic literature review. *Crit Care*. 2010;14(5):R169.
28. Nowroozpoor A, Malekmohammad M, Seyyedi SR, Hashemian SM. Pulmonary Hypertension in Intensive Care Units: An Updated Review. *Tanaffos*. 2019;18(3):180-207.



29. Brower RG, Matthay MA, Morris A, Schoenfeld D, Thompson BT, Wheeler A. Ventilation with lower tidal volumes as compared with traditional tidal volumes for acute lung injury and the acute respiratory distress syndrome. *N Engl J Med.* 2000;342(18):1301-8.
30. Hashem MD, Nelliot A, Needham DM. Early Mobilization and Rehabilitation in the ICU: Moving Back to the Future. *Respir Care.* 2016;61(7):971-9.
31. Aryal S, King CS. Critical care of patients with pulmonary arterial hypertension. *Curr Opin Pulm Med.* 2020;26(5):414-21.
32. Steppan J, Diaz-Rodriguez N, Barodka VM, Nyhan D, Pullins E, Houston T, Damico RL, Mathai SC, Hassoun PM, Berkowitz DE, et al. Focused Review of Perioperative Care of Patients with Pulmonary Hypertension and Proposal of a Perioperative Pathway. *Cureus.* 2018;10(1):e2072.
33. Chakinala MM, Coyne DW, Benza RL, Frost AE, McGoon MD, Hartline BK, Frantz RP, Selej M, Zhao C, Mink DR, et al. Impact of declining renal function on outcomes in pulmonary arterial hypertension: A REVEAL registry analysis. *J Heart Lung Transplant.* 2018;37(6):696-705.
34. Naranjo M, Lo KB, Mezue K, Rangaswami J. Effects of Pulmonary Hypertension and Right Ventricular Function in Short and Long-Term Kidney Function. *Curr Cardiol Rev.* 2019;15(1):3-11.
35. Rangaswami J, Bhalla V, Blair JEA, Chang TI, Costa S, Lentine KL, Lerma EV, Mezue K, Molitch M, Mullens W, et al. Cardiorenal Syndrome: Classification, Pathophysiology, Diagnosis, and Treatment Strategies: A Scientific Statement From the American Heart Association. *Circulation.* 2019;139(16):e840-e78.

36. Fonarow GC, Adams KF, Jr., Abraham WT, Yancy CW, Boscardin WJ, Adhere Scientific Advisory Committee SG, Investigators. Risk stratification for in-hospital mortality in acutely decompensated heart failure: classification and regression tree analysis. *JAMA*. 2005;293(5):572-80.
37. Padkins M, Breen T, Anavekar N, van Diepen S, Henry TD, Baran DA, Barsness GW, Kashani K, Holmes DR, Jr., Jentzer JC. Age and shock severity predict mortality in cardiac intensive care unit patients with and without heart failure. *ESC Heart Fail*. 2020.
38. Avouac J, Airo P, Meune C, Beretta L, Dieude P, Caramaschi P, Tiev K, Cappelli S, Diot E, Vacca A, et al. Prevalence of pulmonary hypertension in systemic sclerosis in European Caucasians and metaanalysis of 5 studies. *J Rheumatol*. 2010;37(11):2290-8.
39. Hachulla E, Gressin V, Guillevin L, Carpentier P, Diot E, Sibilia J, Kahan A, Cabane J, Frances C, Launay D, et al. Early detection of pulmonary arterial hypertension in systemic sclerosis: a French nationwide prospective multicenter study. *Arthritis Rheum*. 2005;52(12):3792-800.
40. Hassoun PM, Zamanian RT, Damico R, Lechtzin N, Khair R, Kolb TM, Tedford RJ, Hulme OL, Houston T, Pisanello C, et al. Ambrisentan and Tadalafil Up-front Combination Therapy in Scleroderma-associated Pulmonary Arterial Hypertension. *Am J Respir Crit Care Med*. 2015;192(9):1102-10.
41. Fisher MR, Mathai SC, Champion HC, Girgis RE, Houston-Harris T, Hummers L, Krishnan JA, Wigley F, Hassoun PM. Clinical differences between idiopathic and scleroderma-related pulmonary hypertension. *Arthritis Rheum*. 2006;54(9):3043-50.
42. Hassoun PM. Pulmonary arterial hypertension complicating connective tissue diseases. *Semin Respir Crit Care Med*. 2009;30(4):429-39.

43. Kawut SM, Taichman DB, Archer-Chicko CL, Palevsky HI, Kimmel SE. Hemodynamics and survival in patients with pulmonary arterial hypertension related to systemic sclerosis. *Chest*. 2003;123(2):344-50.
44. Hsu S, Kokkonen-Simon KM, Kirk JA, Kolb TM, Damico RL, Mathai SC, Mukherjee M, Shah AA, Wigley FM, Margulies KB, et al. Right Ventricular Myofilament Functional Differences in Humans With Systemic Sclerosis-Associated Versus Idiopathic Pulmonary Arterial Hypertension. *Circulation*. 2018;137(22):2360-70.

**Table 1. Characteristics of PAH patients admitted to the ICU**

	All n=102	IPAH n=29	CTD-PAH n=57*	Other-PAH n=16**	p-value
<b>Age upon first admission, years, mean</b>	58.7 ± 13.6	53.7 ± 13.5	63.5 ± 11.9	50.6 ± 12.8	<0.001
<b>Female, n (%)</b>	86 (84.3)	27 (93.1)	51 (89.5)	8 (50.0)	<0.001
<b>Race, White/AA/Hispanic/Others, n</b>	59/39/2/2	16/12/0/1	36/20/0/1	7/7/2/0	0.05
<b>WHO FC pre-admission (II/III/IV), n</b>	24/59/19	10/15/4	12/36/9	2/8/6	0.002
<b>Median time since PAH diagnosis to first ICU admission, months, median (IQR)</b>	38.9 (12.4-92.3)	64.5 (25.9-147.3)	39.5 (11.8-92.1)	24.6 (9.7-33.9)	0.002
<b>Hemodynamics at PAH diagnosis</b>					
RAP, mmHg, mean	11 ± 6	12 ± 6	9 ± 6	12 ± 7	0.14
mPAP, mmHg, mean	45 ± 14	54 ± 14	39 ± 12	50 ± 15	<0.001
PCWP, mmHg, mean	10 ± 4	10 ± 3	11 ± 4	11 ± 4	0.97
CO, L/min, mean	4.7 ± 1.9	4.6 ± 2.0	4.8 ± 1.8	4.6 ± 2.1	0.85
<b>CI, L/min/m<sup>2</sup>, mean</b>	2.19 ± 0.64	2.11 ± 0.53	2.23 ± 0.69	2.12 ± 0.58	0.61
PVR, Wood units, median (IQR)	7.7 (4.8-11.8)	10.0 (7.6-14.6)	6.7 (3.0-9.6)	9.4 (5.-14.0)	0.008
<b>Comorbidities</b>					
Coronary artery disease, n (%)	10 (9.8)	4 (13.8)	4 (7.2)	2 (13.0)	0.56
Systemic hypertension, n (%)	23 (22.6)	8 (27.6)	14 (24.6)	1 (6.3)	0.22
Diabetes mellitus, n (%)	14 (13.7)	9 (31.0)	3 (5.3)	2 (12.5)	0.005
Peripheral vascular disease, n (%)	3 (2.9)	0(0)	2 (3.5)	1 (6.3)	0.45
Cerebrovascular disease, n (%)	3 (2.9)	0(0)	2 (3.5)	1 (6.3)	0.45
History of depression, n (%)	9 (8.8)	1 (3.5)	5 (8.8)	3 (18.8)	0.68
<b>Charlson comorbidity index</b>					
0, n (%)	9 (8.8)	8 (27.6)	0(0)	1 (6.3)	<0.001
1, n (%)	10 (9.8)	4 (13.8)	6 (10.4)	0(0)	
2, n (%)	15 (14.7)	6 (20.7)	7 (12.3)	2 (12.5)	
≥3, n (%)	68 (66.7)	11 (37.9)	44 (77.2)	13 (81.2)	

Data are expressed as mean ± standard deviation, absolute number (percentage), median (interquartile range, IQR) unless otherwise indicated. **Definitions of abbreviations:** PAH, pulmonary arterial hypertension; IPAH, idiopathic PAH; CTD-PAH, connective tissue PAH; ICU, intensive care unit; AA, African American; RAP, right atrial pressure; mPAP, mean pulmonary artery pressure; PCWP, pulmonary capillary wedge pressure; CO, cardiac output; CI, cardiac index; PVR, pulmonary vascular resistance.

\***CTD-PAH includes:** 46 scleroderma associated PAH (SSc-PAH) patients and 11 patients with other CTD-associated PAH conditions.

\*\***Other-PAH includes:** CHD-PAH (3), PoPH-PAH (6), and HIV-PAH (7) patients.

<b>Table 2. Characteristics of ICU admissions</b>					
	<b>All n=155</b>	<b>IPAH n=45</b>	<b>CTD-PAH n=85</b>	<b>Other-PAH n=25*</b>	<b>p-value</b>
<b>Causes of ICU admission</b>					
Right heart failure, n (%)	83 (53.5)	27 (60.0)	45 (52.9)	11 (44.0)	0.27
Infection, n (%)	27 (17.4)	6 (13.3)	16 (18.8)	5 (20.0)	0.54
Arrhythmia, n (%)	17 (11.0)	5 (11.1)	11 (12.9)	1 (4.0)	0.61
Syncope, n (%)	13 (8.4)	1 (2.2)	8 (9.4)	4 (16.0)	0.09
Bleeding disorder, n (%)	8 (5.2)	2 (4.4)	3 (3.5)	3 (12.0)	0.19
Others, n (%)	7 (4.5)	4 (8.9)	2 (2.4)	1 (4.0)	0.37
<b>Admission data</b>					
Systolic BP, mmHg, mean	105.9 ± 22.1	105.3 ± 15.5	106.8 ± 24.3	103.6 ± 26.6	0.85
Diastolic BP, mmHg, mean	62.4 ± 12.9	63.2 ± 9.0	62.9 ± 15.0	58.3 ± 9.9	0.37
Heart rate, bpm, mean	93.7 ± 17.7	94.9 ± 15.1	93.7 ± 18.7	91.1 ± 19.8	0.75
Creatinine, mg/dL, mean	1.8 ± 1.4	1.8 ± 1.3	1.5 ± 1.2	2.6 ± 2.0	0.006
eGFR <60 ml/min/1.73 m <sup>2</sup> , n (%)	97 (62.6)	26 (57.8)	52 (61.2)	19 (76.0)	0.009
BUN, mg/dL, mean	34.5 ± 22.3	33.0 ± 21.3	36.2 ± 23.1	31.7 ± 22.0	0.57
Na, mEq/mL, mean	135.7 ± 6.1	135.2 ± 6.8	136.5 ± 5.9	134.1 ± 4.7	0.16
Na < 136 mEq/mL, n (%)	74 (47.7)	17 (37.8)	37 (43.5)	20 (80.0)	0.002
Bilirubin, total, mg/dL, mean	1.5 ± 1.6	1.7 ± 2.0	1.0 ± 0.9	2.5 ± 2.0	<0.001
Lactate, mmol/L, mean	2.6 ± 3.1	2.4 ± 2.9	2.6 ± 3.3	3.1 ± 2.9	0.72
Hemoglobin, g/dL, mean	11.0 ± 2.4	11.6 ± 2.9	10.9 ± 2.1	10.6 ± 2.5	0.15
Anemia, n (%)	115 (74.2)	31 (68.9)	63 (74.1)	21 (84.0)	0.38
ProBNP, pg/mL, median (IQR)	3851 (2229-7000)	3192 (1533-6874)	4727 (2302-6945)	4209 (921-8518)	0.63
<b>ICU support</b>					
Vasopressors/Inotropes, n (%)	75 (48.4)	19 (42.2)	43 (50.6)	13 (52.0)	0.61
Mechanical ventilation, n (%)	32 (20.1)	9 (20.0)	17 (20.0)	6 (24.0)	0.90
Renal replacement therapy, n (%)	9 (5.8)	2 (4.4)	2 (2.4)	5 (20.0)	0.004
<b>Length of ICU stay, days, median (IQR)</b>	5 (2-9)	5 (2-8)	5 (3-10)	5 (3-8)	0.60
<b>ICU mortality, n (%)</b>					
Right heart failure, mortality, n (%)	42 (27.1)	10 (22.2)	22 (25.9)	10 (40.0)	0.25
Right heart failure, mortality, n (%)	26 (31.3)	9 (90.0)	12 (54.5)	5 (50.0)	0.31
Infections, mortality, n (%)	6 (22.2)	0 (0)	5 (22.7)	1 (10.0)	0.76
Vasopressors/Inotropes, mortality n (%)	32 (42.7)	8 (80.0)	15 (68.2)	9 (90.0)	<0.001
Mechanical ventilation, mortality n (%)	16 (50.0)	5 (50.0)	7 (31.8)	4 (40.0)	0.001

Data are expressed as mean ± standard deviation, absolute number (percentage), median (interquartile range, IQR) unless otherwise indicated.

**Definitions of abbreviations:** PAH, pulmonary arterial hypertension; IPAH, idiopathic PAH; CTD-PAH, connective tissue PAH; ICU, intensive care unit; BP, blood pressure; eGFR, estimated glomerular filtration rate; BUN, blood urea nitrogen; Na, sodium; proBNP, pro-b-type natriuretic peptide.

\***Other-PAH includes:** CHD-PAH (3), PoPH-PAH (11), and HIV-PAH (11) admissions.

**Table 3. Risk factors for in-hospital mortality in PAH patients admitted to the ICU**

	Unadjusted OR (95% CI)	p-value	Adjusted for PAH diagnosis and age OR (95% CI)	p-value
Age per year	1.01 (0.98-1.03)	0.67	NA	NA
Female vs. male	0.47 (0.20-1.10)	0.08	0.57 (0.23-1.40)	0.22
CTD-PAH v. IPAH	1.27 (0.52-2.90)	0.64	1.11 (0.44-2.80)*	0.83
WHO FC pre-admission (III & IV)	4.05 (0.56-29.27)	0.16	3.46 (0.41-26.10)	0.26
Charlson index $\geq 2$	1.94 (0.12-31.89)	0.64	1.30 (0.22-7.80)	0.29
<b>Data on admission</b>				
Systolic BP per mmHg decrease	0.99 (0.97-1.01)	0.36	0.99 (0.97-1.01)	0.28
Systolic BP <100 mmHg	1.05 (0.51-2.16)	0.88	1.06 (0.51-2.20)	0.87
Anemia	0.70 (0.32-1.54)	0.37	0.64 (0.29-1.43)	0.28
eGFR <60 ml/min/1.73 m <sup>2</sup>	5.27 (1.05-26.60)	0.04	4.65 (0.86-25.10)	0.07
Na < 136 mEq/mL	3.37 (1.58-7.19)	0.002	3.10 (1.41-6.82)	0.005
ProBNP, pg/mL (log transformed)	1.74 (1.04-2.93)	0.036	1.75 (1.03-2.98)	0.03
Bilirubin, total, mg/dL	1.39 (1.08-1.78)	0.01	1.40 (1.09-1.80)	0.009
Lactate, mmol/L	1.40 (0.98-2.02)	0.06	1.42 (1.05-1.93)	0.023
Previous hospitalization	1.10 (0.52-2.31)	0.89	1.09 (0.52-2.31)	0.81
<b>In-hospital support</b>				
Need for vasopressors/inotropes	5.21 (2.32-11.68)	<0.001	5.29 (2.28-12.28)	<0.001
Need for mechanical ventilation	3.73 (1.64-8.47)	0.002	3.76 (1.63-8.67)	0.002
Need for renal replacement therapy	6.11 (1.45-25.81)	0.014	5.57 (1.25-24.76)	0.024

**Definitions of abbreviations:** PAH, pulmonary arterial hypertension; IPAH, idiopathic PAH; CTD-PAH, connective tissue PAH; ICU, intensive care unit; WHO FC, World Health Organization functional class; BP, blood pressure; eGFR, estimated glomerular filtration rate; BUN, blood urea nitrogen; Na, sodium; proBNP, pro-b-type natriuretic peptide.

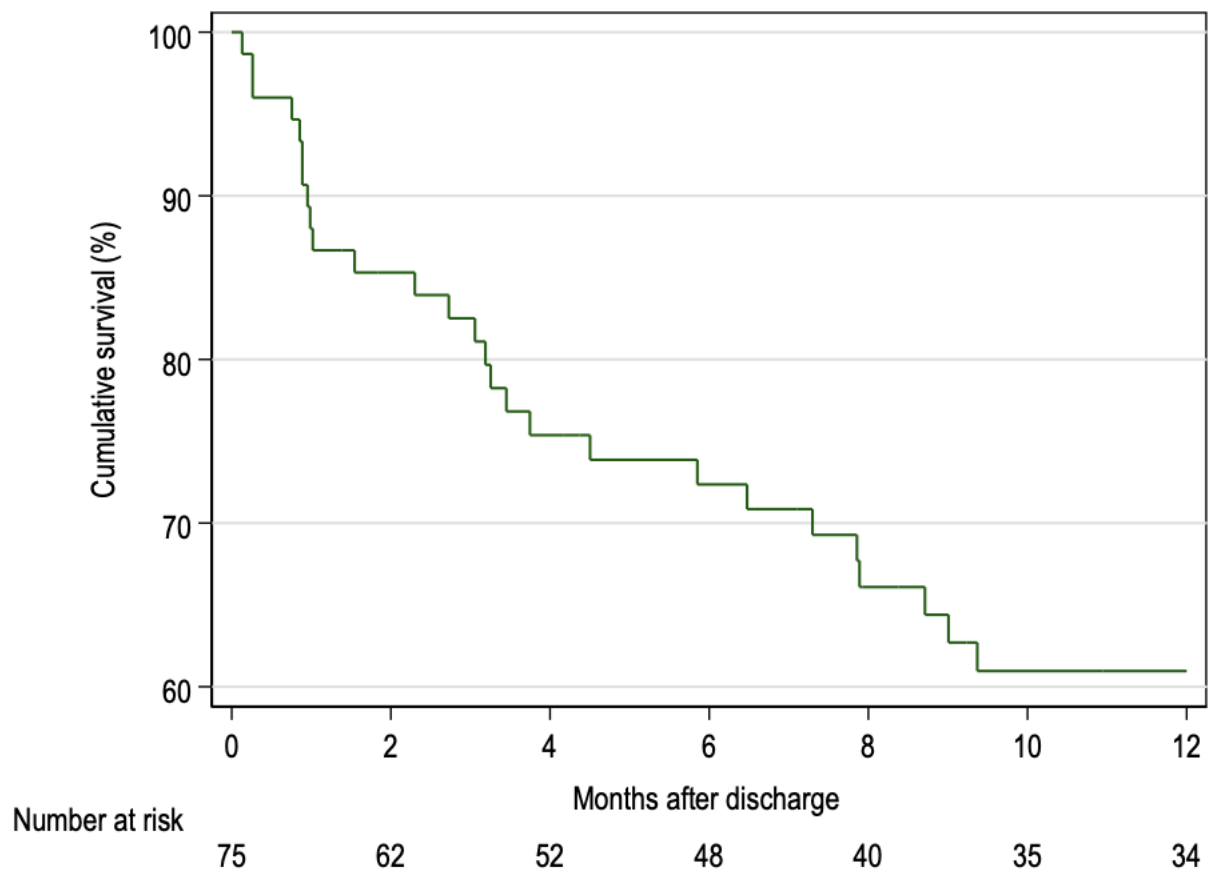
\*adjusted only for age

**Table 4. Risk factors for mortality within the first year after discharge in PAH patients admitted to the ICU**

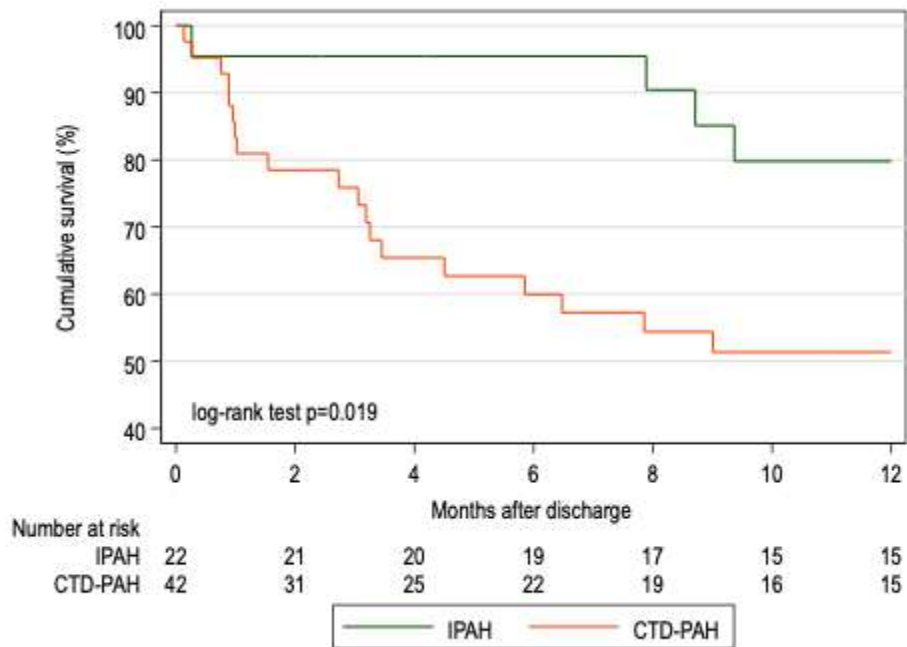
	Unadjusted HR (95% CI)	p-value	Adjusted for PAH diagnosis and age HR (95% CI)	p-value
Age per year	1.02 (1.01-1.04)	0.01	NA	NA
Female vs. male	0.89 (0.49-1.62)	0.70	0.98 (0.53-1.81)	0.93
CTD-PAH v. IPAH	2.31 (1.28-4.16)	0.005	1.89 (1.01-3.59)*	0.05
WHO FC pre-admission (III & IV)	3.24 (0.95-11.02)	0.06	2.99 (0.84-10.63)	0.09
Charlson index $\geq 2$	4.41 (0.53-36.67)	0.17	1.25 (0.35-4.52)	0.72
<b>Data on admission</b>				
Systolic BP <100 mmHg	1.08 (0.70-1.68)	0.72	1.06 (0.69-1.64)	0.78
Anemia	0.91 (0.55-1.49)	0.70	0.86 (0.53-1.40)	0.55
eGFR <60 ml/min/1.73 m <sup>2</sup>	1.91 (0.76-4.78)	0.16	1.52 (0.59-3.92)	0.38
Na < 136 mEq/mL	1.87 (1.21-2.89)	0.005	1.71 (1.08-2.69)	0.021
ProBNP, pg/mL (log transformed)	1.48 (1.10-1.98)	0.009	1.35 (1.01-1.83)	0.04
Bilirubin, total, mg/dL	1.12 (1.00-1.26)	0.06	1.19 (1.05-1.34)	0.006
<b>In-hospital support</b>				
Need for vasopressors/inotropes	2.73 (1.73-4.30)	<0.001	2.57 (1.62-4.08)	<0.001
Need for mechanical ventilation	2.05 (1.24-3.38)	0.005	2.06 (1.25-3.40)	0.005
Need for renal replacement therapy	1.80 (0.68-4.76)	0.23	1.91 (0.68-5.38)	0.21

**Definitions of abbreviations:** PAH, pulmonary arterial hypertension; IPAH, idiopathic PAH; CTD-PAH, connective tissue PAH; ICU, intensive care unit; WHO FC, World Health Organization functional class; BP, blood pressure; eGFR, estimated glomerular filtration rate; BUN, blood urea nitrogen; Na, sodium; proBNP, pro-b-type natriuretic peptide.

\*adjusted only for age



**Figure 1.** Cumulative survival after discharge at 3, 6, and 12 months of PAH patients admitted to the ICU.



**Figure 2.** Kaplan-Meier curve of 1-year survival after discharge of PAH patients admitted to the ICU by underlying diagnosis (IPAH vs. CTD-PAH).