

Early View

Original article

Feasibility of 3-Dimensional Facial Imaging and Printing for Producing Customised Nasal Masks for Continuous Positive Airway Pressure

Kelvin Duong, Joel Glover, Alexander C. Perry, Deborah Olmstead, Mark Ungrin, Pina Colarusso, Joanna E. MacLean, Andrew R. Martin

Please cite this article as: Duong K, Glover J, Perry AC, *et al.* Feasibility of 3-Dimensional Facial Imaging and Printing for Producing Customised Nasal Masks for Continuous Positive Airway Pressure. *ERJ Open Res* 2020; in press (<https://doi.org/10.1183/23120541.00632-2020>).

This manuscript has recently been accepted for publication in the *ERJ Open Research*. It is published here in its accepted form prior to copyediting and typesetting by our production team. After these production processes are complete and the authors have approved the resulting proofs, the article will move to the latest issue of the ERJOR online.

Copyright ©ERS 2020. This article is open access and distributed under the terms of the Creative Commons Attribution Non-Commercial Licence 4.0.

Feasibility of 3-Dimensional Facial Imaging and Printing for Producing Customized Nasal Masks for Continuous Positive Airway Pressure

Kelvin Duong¹, Joel Glover², Alexander C. Perry³, Deborah Olmstead⁴, Mark Ungrin⁵, Pina Colarusso², Joanna E. MacLean⁶, Andrew R. Martin¹

1. Department of Mechanical Engineering, University of Alberta
2. Live Cell Imaging Laboratory, Department of Physiology and Pharmacology and the Snyder Institute for Chronic Diseases, Cumming School of Medicine, University of Calgary
3. Faculty of Medicine and Dentistry, University of Alberta
4. Stollery Children's Hospital
5. Department of Comparative Biology & Experimental Medicine, Faculty of Veterinary Medicine, Biomedical Engineering Graduate Program, Alberta Children's Hospital Research Institute, University of Calgary
6. Department of Pediatrics and Women & Children's Health Research Institute, Faculty of Medicine & Dentistry, University of Alberta; Stollery Children's Hospital

Corresponding Author: Andrew Martin, 780-492-9012, andrew.martin@ualberta.ca, 10-324

Innovation Centre for Engineering, University of Alberta, Edmonton, Alberta T6G 1H9, Canada

Detail of Each Author's Contributions: conception and design of work (MU, PC, JM, AM); acquisition and analysis of data (KD, JG, AP, DO); interpretation of data (KD, DO, JM, AM); drafting manuscript (KD, JG, AP, AM); critically revising manuscript (DO, MU, PC, JM, AM)

Word Count for Manuscript: 3154 Words

Sources of Funding: Alberta Economic Development and Trade; Research and Innovation Seed Grant from Respiratory Health Strategic Clinical Network (Alberta Health Services)

Abstract

Rationale: Delivery of continuous positive airway pressure (CPAP) is the standard treatment for obstructive sleep apnea (OSA) in children and adults. Treatment adherence is a major challenge as many patients find the CPAP mask uncomfortable. The study aim was to demonstrate the feasibility of delivered CPAP through customized nasal masks by assessing mask leak and comfort of customized masks compared to commercially available CPAP masks. **Methods:** Six healthy adult volunteers participated in a cross-over study including commercial masks in three different sizes (petite, small/medium, and large) from the same supplier and a customized mask fabricated for each subject using 3D facial scanning and modern additive manufacturing processes. Mask leak and comfort were assessed with varying CPAP levels and mask tightness. Leak was measured in real time using an inline low-resistance Pitot tube flow sensor, and each mask was ranked for comfort by the subjects. **Results:** Mask leak rates varied directly with CPAP level and inversely with mask tightness. When ranked for comfort, three subjects favoured the customized mask while three favoured a commercial mask. The petite mask yielded the highest mask leaks and was ranked least comfortable by all subjects. Relative mask leaks and comfort rankings for the other commercial and customized masks varied between individuals. Mask leak was comparable when comparing the customized masks with the highest ranked commercial masks. **Conclusion:** Customized masks successfully delivered target CPAP settings in all six subjects, demonstrating the feasibility of this approach.

Word Count for Abstract: 239 Words

Introduction

Obstructive sleep apnea (OSA) is a common sleep-related breathing disorder where individuals experience partial or complete interruptions in breathing due to obstruction of the upper airways. Moderate to severe OSA, defined in adults as an apnea-hypopnea index (AHI) ≥ 15 /hour [1], has been linked to significant negative health consequences, ranging from daytime sleepiness in the short term to acute cardiovascular events and increased risk of a range of medical comorbidities in the long term [2]. Increased motor vehicle accidents have also been linked to individuals experiencing excessive daytime sleepiness [1, 2]. It is estimated that 13 % of men and 6 % of women have moderate to severe OSA [3].

Currently, the standard treatment for OSA in adults is the delivery of continuous positive airway pressure (CPAP). CPAP acts as a pneumatic stent to prevent collapse of the upper airway during sleep, thus restoring breathing and sleep, and reducing OSA-related health consequences [1, 2, 4, 5]. Administration of CPAP requires a tight-fitting interface, normally a mask, which should fit the individual patient's facial structure [6]. Mask air leakage and discomfort have been linked to poor CPAP adherence [7, 8]. Mask leak can cause deleterious effects, such as eye irritation and high noise levels [2, 9]. Conversely, when mask leak is reduced through excessive tightening of the headgear, discomfort such as pain, rashes, skin breakdown, and pressure sores may arise where the mask contacts the face [2, 9]. Improving the CPAP mask fit, such that mask leakage is minimized at a comfortable tightness of fit, may help improve access to CPAP therapy for a more diverse range of patients, and could potentially increase adherence to CPAP therapy.

To improve CPAP or non-invasive ventilation (NIV) mask fit, several groups have recently investigated the manufacture of customized masks or mask cushions using a combination of 3D facial scanning and modern additive manufacturing processes [10-13]. Such

approaches may be particularly useful for individuals with OSA and craniofacial anomalies [13]. In one comparison between customized masks and a conventional commercial mask, subjects with severe OSA showed improved AHI compared to their baseline when using the customized mask versus subjects who used a commercial mask over a 14-day period [10].

Here, we report on the development of individualized, custom-built nasal CPAP masks using 3D facial scanning and 3D printing technologies. Mask leakage and comfort were evaluated in healthy, adult volunteers for customized masks and commercial masks of three different sizes in a cross-over study.

Methods

This feasibility study of custom masks for non-invasive delivery of CPAP was conducted at the Respiratory Fluid Mechanics Lab at the University of Alberta in Canada between February 2019 and June 2019. The study was approved by the University of Alberta Research Ethics Board (Study ID: MS1_Pro00085707) and subjects provided informed written consent.

Subjects

Each subject enrolled in the study was at least 18 years old and was a non-smoker. Six subjects were enrolled in this feasibility study. Non-probability, purposive sampling was used to select a useful group of subjects, based on their motivation, willingness to participate, and capability to effectively communicate their experiences and opinions [14]. There were four male subjects and two female subjects, aged 24 - 62 y. No subjects had previously used nocturnal CPAP support.

Experimental Apparatus

In this study, four different CPAP masks were tested. This included three different sizes of a commercial CPAP mask (Wisp Nasal CPAP Mask; Philips Respironics, Murrysville, PA; petite, small/medium, and large) along with a customized CPAP mask designed and individually manufactured for each subject (Live Cell Imaging Laboratory at the University of Calgary, Alberta, Canada). The Wisp masks were selected because they fit a wide range of facial geometries, and three sizes were tested to provide comparative data ranging from a poor fit to a good fit in each subject. During the study, each subject wore standard headgear (Fabric Frame; Philips Respironics, Murrysville, PA). The mask was connected to a supply tube which was connected to a CPAP machine (S8 Elite; ResMed, San Diego, CA) with a viral/bacterial filter (VP7100; KEGO Corporation, London, Ontario, Canada) and an inline Pitot tube flow sensor (RespEQ, Baltimore, MD; Figure 1). The Pitot tube flow sensor was used to obtain mask air leak values in real time by measuring the airflow, in standard litres per minute (SLPM; with standard conditions defined as 21.1°C and 101.3 kPa), between the CPAP machine and the mask. The Pitot tube flow sensor was selected over a conventional pneumotach due to its low flow resistance, limiting the effects it had on the delivery of CPAP [15]. A pressure transducer (Seleon, Heilbronn, Germany) was used to convert the differential pressure across the sensor into an electric signal which was transmitted using a microcontroller board (UNO Rev3; Arduino, Somerville, MA) and recorded with LabView software (National Instruments, Austin, TX). The flow sensor-pressure transducer combination was calibrated ahead of the study against a series of known airflow rates, ranging from -120 to 120 SLPM. Time-averaged airflow rate was obtained by analyzing the airflow data with the program MATLAB (MathWorks, Natick, MA). Before each subject visit, the intentional air leak through the expiratory port of the supply tubing was measured at a CPAP setting of 4, 8, and 12 cmH₂O using the Pitot tube flow sensor with the end

of the tube sealed off. Mask air leak was then later calculated after completion of each subject's test by subtracting the intentional air leak from the time-averaged airflow.

Fabrication of Custom Masks

The CPAP mask design consists of two components, a standard coupler and a customized cushion fit to the individual face (Figure 2). The coupler was designed to connect the cushion to the commercial headgear and supply tubing (Philips Respironics, Murrysville, PA). The coupler is a hard-plastic component and was fabricated using a stereo-lithography apparatus 3D printer (Peopoly Moai, Los Angeles, CA) using ultraviolet curable resin. The same coupler design was used for all custom masks that were tested. All six customized cushions are shown in Figure 3.

Subjects' facial features were captured using a 3D facial scanning system (3dMDFace System, Atlanta, GA). The facial scans were digitally edited to limit the regions examined (frontal, nasal, infraorbital, buccal, and mental regions) using Autodesk Meshmixer (San Rafael, CA). The edited scans were imported into computer aided design software to design custom cushions to match the facial features (Autodesk Fusion 360, San Rafael, CA).

The cushion-skin interface was customized by point-wise matching the surface of the cushion, which contacts the skin, to the scanned mesh of corresponding facial features. To ensure skin safety and comfort, the cushions were fabricated from a skin safe silicone (Smooth-on Dragon Skin 30, Macungie, PA). As this material could not be printed directly using available 3D printers, it was cast into 3D printed molds. Using a Constructive Solid Geometry (CSG) approach, the desired cushion geometry was subtracted from the mold box interior, leaving a shell in the shape of the custom cushion between an inner and outer mold component (Figure 4, A). These components were manufactured using a fused filament fabrication 3D-printer

(Ultimaker 3, Utrecht, The Netherlands) using 2.85 mm polylactic acid filament (Filaments.ca 6B14 FCAPLA2BK, Mississauga, ON, Canada). The 3D-printer used has a manufacturer-reported accuracy of $\pm 12.5 \mu\text{m}$ XY (i.e. in the plane parallel to the print bed) and $\pm 2.5 \mu\text{m}$ Z (normal to the print bed). The mold box was assembled and clamped, two-component silicone was prepared as per the manufacturer's instructions and injected into the mold box using a 60 mL Luer-lock syringe. After curing (16 hr, 20°C), the cushion was removed from the mold and visually inspected for tears and other sources of unintended leak prior to bench testing. In two instances, cushions failed visual inspection due to the presence of air pockets, which was attributed to inadequate material being injected. These cushions were rejected and remade for use in the present study.

Study Design

This feasibility study aimed to investigate the use of customized 3D printed CPAP masks through comparison of mask air leak rates and subject-reported comfort rankings against commercially available CPAP masks.

For each study subject, the headgear was adjusted to obtain three levels of mask tightness, each within a 50 g tolerance, that were measured by the force applied to the face: 100 g for a loose fit, 350 g for an appropriate fit, and 600 g for a tight fit. These forces were measured using a force gauge (Model DFG35-10; OMEGA, Norwalk, CT). The mask tightness chosen to represent loose, appropriate, and tight fits were determined in preliminary consultation and lab bench testing with a nurse practitioner highly experienced in fitting CPAP masks to patients. The appropriate fit was determined using the “two-finger rule” [16]. Three CPAP pressures were selected for testing: 4, 8, and 12 cmH₂O. This coincides with the median CPAP of 8 – 10 cmH₂O used in other OSA studies [17-22].

Each subject underwent testing of the four masks at each pressure level and mask tightness for a total of 36 individual tests. Each pressure was applied for one minute with the flow sensor recording the airflow over the same period. Subjects were instructed to breathe normally while in a seated position. At the completion of the mask testing, each subject was asked to rank the four CPAP masks in order of comfort level.

Statistical Analysis

Mask air leak was compared between all four CPAP masks using a three factor repeated measures Analysis of Variance (ANOVA) procedure along with Tukey post hoc analysis. Additionally, a three factor repeated measures ANOVA procedure was used to specifically compare the commercial CPAP nasal mask that each subject found most comfortable with their customized mask. The three compared factors were the CPAP mask, CPAP level, and mask tightness. Results with two-sided $P \leq 0.05$ were considered significant. Statistical analysis was performed with MATLAB software.

Results

Six subjects were enrolled in this study. The intentional air leak through the expiratory port for the three tested CPAP levels was found to be 14.0 ± 0.4 SLPM for 4 cmH₂O, 19 ± 1 SLPM for 8 cmH₂O, and 24 ± 1 for 12 cmH₂O (mean \pm standard deviation; $n = 6$). When testing with a loose fit the CPAP machine would alarm “high leak”, indicating that target pressures were not maintained in the breathing circuit and mask. This occurred for two subjects using their customized masks at the 12 cmH₂O CPAP setting; two and four subjects using the petite size commercial mask at 8 and 12 cmH₂O, respectively; two subjects using the small/medium size

commercial mask at both 8 and 12 cmH₂O; and one subject using the large commercial mask at 8 cmH₂O. When testing with the appropriate fit, the “high leak” alarm was given only for one subject using the petite size commercial mask at 12 cmH₂O. For all other combinations of mask tightness and CPAP levels, the customized and commercial masks delivered and maintained target CPAP in all six adult subjects, with no alarms.

Average mask air leaks for each combination of mask tested, CPAP level, and tightness are displayed in Table 1. Each factor, CPAP mask, CPAP level, and mask tightness had influence on mask air leak. Significant influences on leak were also observed in all interactions between the three factors apart from the interaction between CPAP mask and CPAP level. From post hoc analysis, the individual CPAP masks were compared against one another for each CPAP level and mask tightness combination. The pairs of masks observed to be significantly different in air leak have been displayed in Table 2.

Mask Comfort

Out of the four masks tested, three of the six subjects found the customized mask to be the most comfortable, two subjects found it to be the second most comfortable, and one subject found it to be the third most comfortable. Excluding the customized mask, four subjects preferred the large sized commercial mask and two subjects preferred the small/medium sized commercial mask.

Preferred Commercial CPAP Mask vs Customized CPAP Mask

When comparing the mask air leak for each subjects’ preferred commercial mask to their customized mask, the influence of both pressure level and mask tightness were statistically significant, but the influence of the mask itself was not. Significant influence on mask leak was only observed in the interaction between CPAP level and mask tightness.

Relative mask air leak was variable between subjects when comparing their preferred commercial masks against their customized masks (Figure 5). Some subjects showed a decrease in mask leak when using their customized masks whereas other subjects showed an increase in mask leak.

Discussion

Both mask leak and comfort results reported herein indicate that, on average, the customized nasal CPAP masks performed similarly to commercial masks (of appropriate size), for the small sample of healthy adults studied. For the tightness deemed appropriate, the customized masks did not produce any “high leak” alarm. These results suggest that customized masks could be used to deliver CPAP therapy safely and effectively. Conversely, customized masks did not consistently reduce mask leak nor improve comfort across study subjects. Rather, the relative leak and comfort between the customized masks and commercial masks were highly variable between subjects, presumably as a function of variable facial geometries. Methods of identifying individual patients most likely to benefit from provision of a customized CPAP mask have not been established.

Some limitations of the present feasibility study warrant comment. First, study subjects were in good health and had not previously required nocturnal CPAP support; therefore, they may not reflect patients who are prescribed CPAP. Results for commercial masks may represent a best-case scenario, as the subjects were all healthy without any craniofacial abnormality. Additionally, the commercial masks used in the present study do not necessarily reflect the best available mask for each individual across the broad supply of all masks available from various

manufacturers. Future trials conducted in patients who are prescribed CPAP should compare customized masks with each patient's currently used commercial mask. Second, mask leak testing was done while each subject was seated at rest in an upright position with their head facing forward. Whether or not mask customization has an influence of variation in leak with body position, i.e. lying down or on one's side, or turning in bed, was not assessed in this study. Third, evaluation of all four masks was done in a single visit, which could have skewed comfort rankings due to potential testing fatigue of wearing masks for the entire visit. To mitigate this factor, the order of the masks was randomized for each subject, as well as by providing a 10-minute recovery period between each mask tested. Fourth, though no significant difference was observed between customized and commercial masks in mask leak or in subject-reported comfort, these variables may not necessarily be similar between customized and commercial masks due to the low power of the sample in this feasibility study. Finally, results presented here for customized masks are specific to the customized mask design and fabrication methods employed, including the silicone material used to form the portion of the mask which contacts the face. These results may not generalize to all methods of mask manufacturing.

Notwithstanding these limitations, two consistent trends were observed in the mask leakage data: mask leak varied directly with CPAP levels and inversely with mask tightness. In comparison between all masks, the petite-sized commercial mask exhibited the highest mask leak and was ranked least comfortable by all subjects. Further comparisons between the customized masks and the commercial mask that each subject ranked most comfortable showed no statistically significant influence of mask selection on measured mask leak, which is consistent with results for leakage reported by Cheng *et al.* [10]. Cheng *et al.* [10] reported leakage monitored by a CPAP machine over 14 days of use by patients with severe OSA

randomized into groups using customized or commercial masks. Average (\pm SD) mask leak was 32 ± 19 l/min for customized masks versus 36 ± 48 l/min for commercial masks [10]. Although average mask leak was comparable between groups, variability in mask leak appeared notably lower for the group using customized masks. A similar reduction in variability was noted in the present work, particularly when masks were evaluated at the tightness of fit deemed appropriate.

Our study measured mask leakage in real time by using a low-resistance Pitot tube flow sensor. Other studies looking into customized CPAP masks obtained their leak data directly from the CPAP machine, which required overnight use to obtain an average leak rate [10, 13]. With mask leakage being the main comparative measurement made in the present study, measurements in real time allowed for rapid testing of varying masks, tightness, and CPAP levels. This allowed for faster evaluation of mask leakage between the tested variables. However, unlike the other studies where AHI was an important comparative measurement, our study did not assess AHI since overnight mask usage was not conducted.

Based on the comfort rankings, half of the subjects ranked the customized mask most comfortable, with half ranking one of the commercial mask sizes as most comfortable. Comfort rankings were poorly correlated with measured mask leak, likely indicating that subjects' perception of comfort was more strongly influenced by other factors, such as the pressure of the mask contacting the face or localized leaks directing airflow towards the eyes. While measurement of airflow from the CPAP machine allows the total mask leak to be derived, it provides no information on the location of the leak around the interface between the mask cushion and face. When evaluating customized masks for CPAP, Cheng *et al.* [10] divided their comfort assessment into several components: headgear force, headgear comfort, cushion fit, cushion comfort, forehead comfort, and usability. Their study found better performance in

headgear force and cushion fit for their customized masks, but found no significant correlation between headgear tightness or cushion fit with cushion comfort [10]. Overall, no statistically significant difference in cushion comfort was found between customized and commercial masks [10].

Prevalence of OSA is higher in subjects with craniofacial abnormalities than in the general population [23], some of whom may not be able to maintain CPAP therapy using commercial masks. Morrison *et al.* [13] developed a custom-built oronasal mask for a child with craniofacial abnormalities and OSA which decreased mask leakage, improved AHI, and increased adherence, which were all sustained after three months of use. Such benefits to patients present potential savings to healthcare systems, which may ultimately offset the fabrication costs of custom masks. Based on results from both our study and the study by Morrison *et al.* [13], custom fabricated CPAP masks may be most suitable to a population with craniofacial abnormalities that are unable to use commercial masks. Further study of the custom-built nasal masks presented herein in subjects with craniofacial abnormalities is warranted.

Conclusion

Customized masks successfully delivered and maintained target CPAP settings in all six adult subjects, demonstrating the feasibility of the mask customization methods employed. Customized masks should be explored for individuals with unique facial features who are unable to receive CPAP treatment using commercial masks.

Acknowledgments

Part of this work was supported from a Research and Innovation Seed Grant from Respiratory Health Strategic Clinical Network (Alberta Health Services). A.P was funded by a studentship from the Respiratory Health Strategic Clinical Network for part of this work. We thank the Live Cell Imaging Laboratory team for the support of this project

References

1. Donovan LM, Boeder S, Malhotra A, Patel SR. New developments in the use of positive airway pressure for obstructive sleep apnea. *J Thorac Dis* 2015; 7: 1323-1342.
2. Shapiro GK, Shapiro CM. Factors that influence CPAP adherence: an overview. *Sleep and Breathing* 2010; 14: 323-335.
3. Peppard PE, Young T, Barnet JH, Palta M, Hagen EW, Hla KM. Increased Prevalence of Sleep-Disordered Breathing in Adults. *American Journal of Epidemiology* 2013; 177: 1006-1014.
4. Weaver TE, Sawyer AM. Adherence to continuous positive airway pressure treatment for obstructive sleep apnoea: implications for future interventions. *Indian J Med Res* 2010; 131: 245-258.
5. Rotenberg BW, Murariu D, Pang KP. Trends in CPAP adherence over twenty years of data collection: a flattened curve. *Journal of Otolaryngology - Head & Neck Surgery* 2016; 45: 43.
6. Strickland SL. The Patient Experience During Noninvasive Respiratory Support. *Respiratory Care* 2019; 64: 689-700.
7. Valentin A, Subramanian S, Quan SF, Berry RB, Parthasarathy S. Air Leak is Associated with Poor Adherence to Autopap Therapy. *Sleep* 2011; 34: 801-806.
8. Salepci B, Caglayan B, Kiral N, Parmaksiz ET, Comert SS, Sarac G, Fidan A, Gungor GA. CPAP Adherence of Patients With Obstructive Sleep Apnea. *Respiratory Care* 2013; 58: 1467.

9. Massie CA, Hart RW. Clinical Outcomes Related to Interface Type in Patients With Obstructive Sleep Apnea/Hypopnea Syndrome Who Are Using Continuous Positive Airway Pressure. *Chest* 2003; 123: 1112-1118.
10. Cheng YL, Hsu DY, Lee HC, Bien MY. Clinical verification of patients with obstructive sleep apnea provided with a customized cushion for continuous positive airway pressure. *J Prosthet Dent* 2015; 113: 29-34.e21.
11. Sela M, Toledo N, Honen Y, Kimmel R. Customized Facial Constant Positive Air Pressure (CPAP) Masks. *ArXiv* 2016; abs/1609.07049.
12. Shikama M, Nakagami G, Noguchi H, Mori T, Sanada H. Development of Personalized Fitting Device With 3-Dimensional Solution for Prevention of NIV Oronasal Mask-Related Pressure Ulcers. *Respir Care* 2018; 63: 1024-1032.
13. Morrison R, Vankoeverying K, Nasser H, Kashlan K, Kline S, Jensen D, Edwards S, Hassan F, Schotland H, Chervin R, Buchman S, Hollister S, Garetz S, Green G. Personalized 3D-Printed CPAP Masks Improve CPAP Effectiveness in Children with OSA and Craniofacial Anomalies. 2015.
14. Daniel J. Sampling Essentials: Practical Guidelines for Making Sampling Choices. Thousand Oaks, California: SAGE Publications, Inc.; 2012.
15. Kirkness JP, Verma M, McGinley BM, Erlacher M, Schwartz AR, Smith PL, Wheatley JR, Patil SP, Amis TC, Schneider H. Pitot-tube flowmeter for quantification of airflow during sleep. *Physiol Meas* 2011; 32: 223-237.
16. Castro-Codesal ML, Olmstead DL, MacLean JE. Mask interfaces for home non-invasive ventilation in infants and children. *Paediatric Respiratory Reviews* 2019; 32: 66-72.

17. Rowland S, Aiyappan V, Hennessy C, Catcheside P, Chai-Coezter CL, McEvoy RD, Antic NA. Comparing the Efficacy, Mask Leak, Patient Adherence, and Patient Preference of Three Different CPAP Interfaces to Treat Moderate-Severe Obstructive Sleep Apnea. *J Clin Sleep Med* 2018; 14: 101-108.
18. Guralnick AS, Pant M, Minhaj M, Sweitzer BJ, Mokhlesi B. CPAP adherence in patients with newly diagnosed obstructive sleep apnea prior to elective surgery. *J Clin Sleep Med* 2012; 8: 501-506.
19. McArdle N, Devereux G, Heidarnejad H, Engleman HM, Mackay TW, Douglas NJ. Long-term use of CPAP therapy for sleep apnea/hypopnea syndrome. *Am J Respir Crit Care Med* 1999; 159: 1108-1114.
20. Bakker JP, Neill AM, Campbell AJ. Nasal versus oronasal continuous positive airway pressure masks for obstructive sleep apnea: a pilot investigation of pressure requirement, residual disease, and leak. *Sleep Breath* 2012; 16: 709-716.
21. Shirlaw T, Duce B, Milosavljevic J, Hanssen K, Hukins C. A randomised crossover trial comparing nasal masks with oronasal masks: No differences in therapeutic pressures or residual apnea-hypopnea indices. *Journal of Sleep Research* 2019; 28: e12760.
22. Duarte RLM, Mendes BA, Oliveira-e-Sá TS, Magalhães-da-Silveira FJ, Gozal D. Nasal versus oronasal mask in patients under auto-adjusting continuous positive airway pressure titration: a real-life study. *European Archives of Oto-Rhino-Laryngology* 2020.
23. Tan HL, Kheirandish-Gozal L, Abel F, Gozal D. Craniofacial syndromes and sleep-related breathing disorders. *Sleep Med Rev* 2016; 27: 74-88.

Tables

Table 1. Average mask air leak for varying CPAP mask, CPAP level, and mask tightness

		Average Mask Air Leak \pm Standard Deviation (SLPM); n = 6		
		CPAP Level (cmH ₂ O)		
		4	8	12
CPAP Mask				
	Mask Tightness (g)			
Petite	100	27 \pm 13	48 \pm 15	60 \pm 22
	350	9 \pm 5	17 \pm 9	27 \pm 15
	600	2 \pm 2	5 \pm 2	8 \pm 4
Small/Medium	100	17 \pm 19	37 \pm 23	44 \pm 19
	350	3 \pm 1	7 \pm 4	13 \pm 9
	600	1.1 \pm 0.5	1.3 \pm 0.5	3 \pm 2
Large	100	19 \pm 14	28 \pm 16	29 \pm 5
	350	5 \pm 6	16 \pm 16	18 \pm 10
	600	3 \pm 3	9 \pm 7	13 \pm 11
Custom	100	9 \pm 2	28 \pm 11	45 \pm 20
	350	5 \pm 2	11 \pm 3	18 \pm 4
	600	5 \pm 3	8 \pm 4	11 \pm 2

Table 2. Differences in air leak between masks for varying CPAP level and mask tightness

	CPAP Level (cmH2O)		
	4	8	12
Mask Tightness (g)			
100	No Differences	No Differences	P > L
350	No Differences	No Differences	P > SM
600	C > P	P, C > SM	P, C > SM

* *Definition of abbreviations:* P = Petite; SM = Small/Medium; L = Large; C = Custom

Mask pairings observed to have significantly different mask air leaks when $P < 0.05$ in Post Hoc analysis.

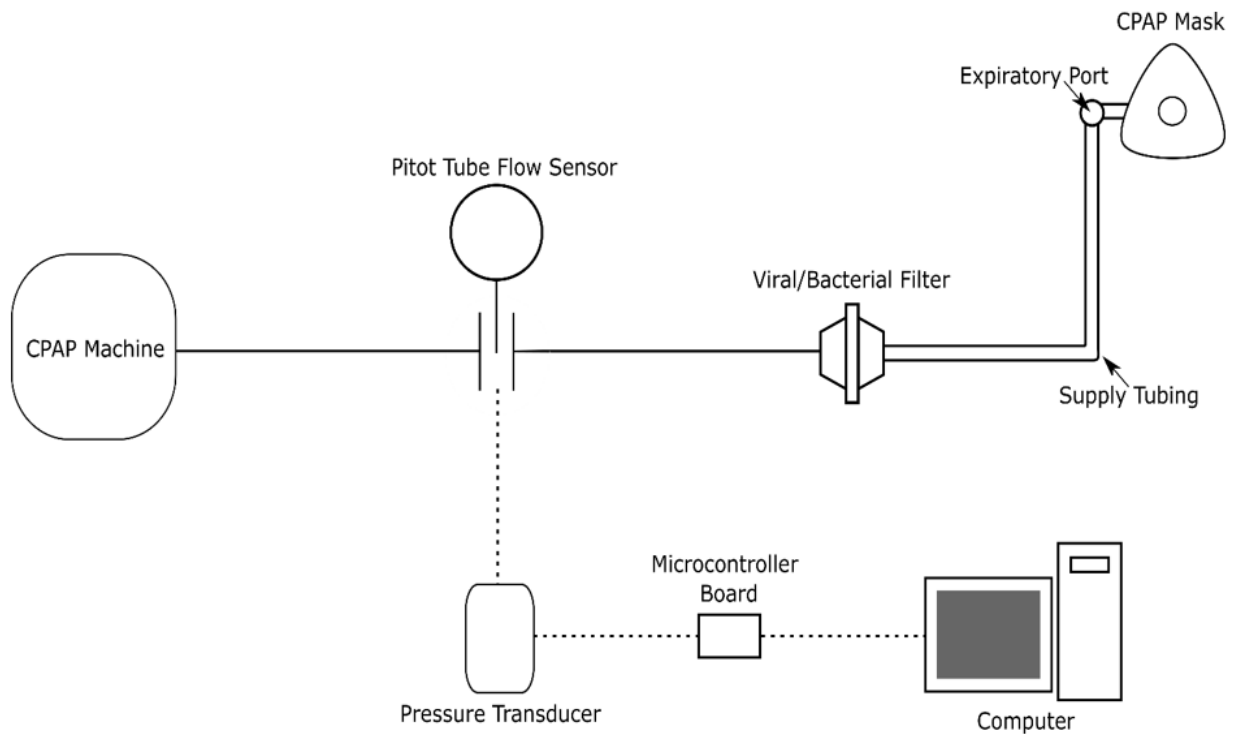
Figure 1. Schematic of experimental apparatus.

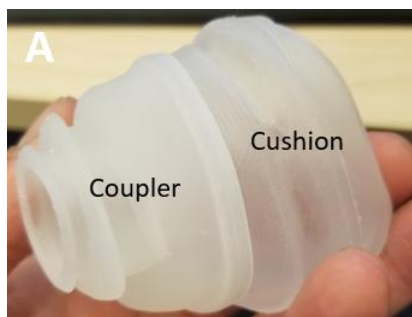
Figure 2. Final customized mask. (A) Portion of mask labelled “coupler” (front) interfaces with the headgear and hosing that conducts positive pressure from the CPAP machine. The “cushion” (back) contacts the subject’s face. (B) Demonstration of the coupler attached to the headgear and hosing of the Wisp CPAP system. (C) Customized mask worn in situ.

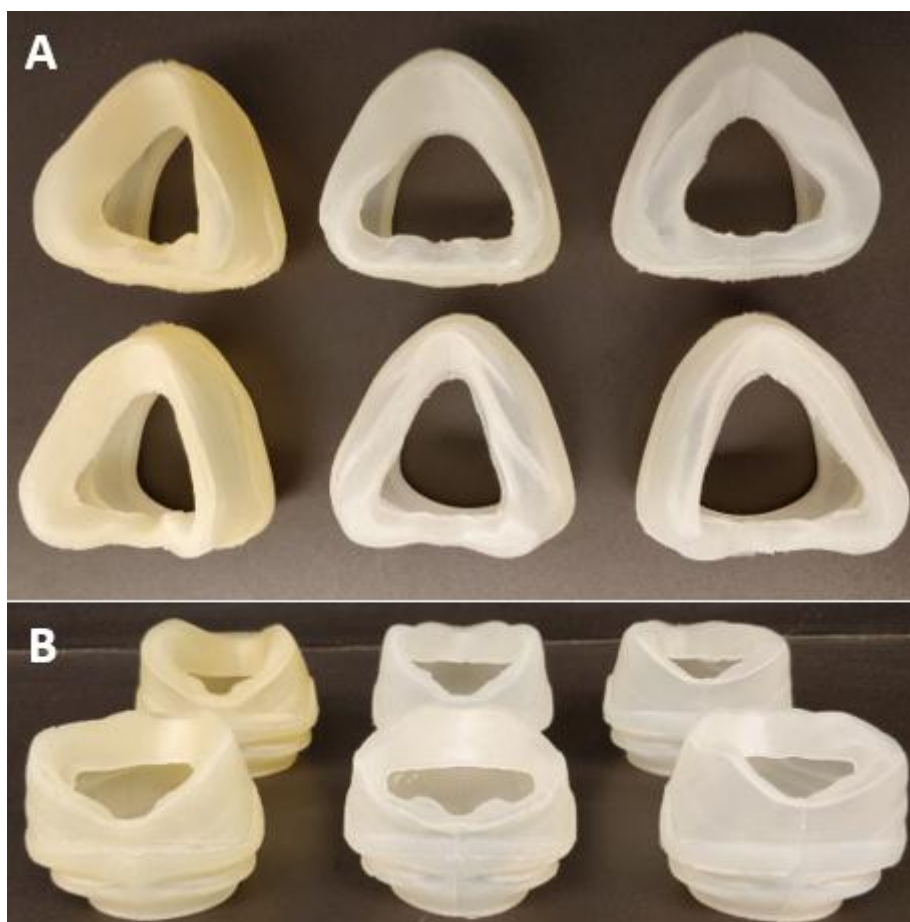
Figure 3. (A) Top down view of all six customized cushions. (B) Front view of all six customized cushions.

Figure 4. (A) Assembled mold box components with one component removed for visualization. Outer mold shown in magenta, inner mold shown in black. (B) Demonstration of custom cushion created after injection of cavity with silicone (white).

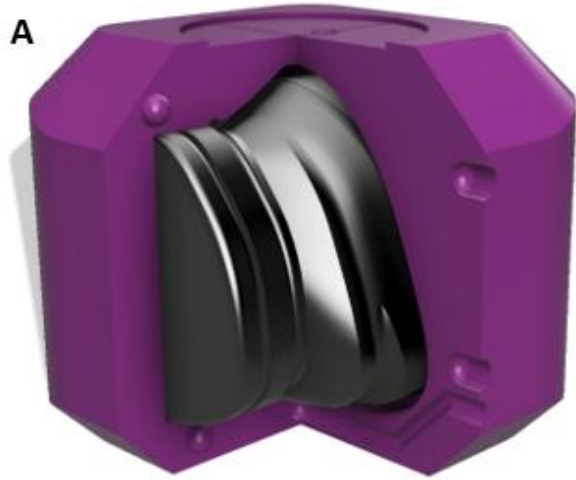
Figure 5. Mask air leak for each subject’s preferred commercial CPAP mask and their customized counterparts at an appropriate fit (350 g).







A



B

